

City of Lawrence

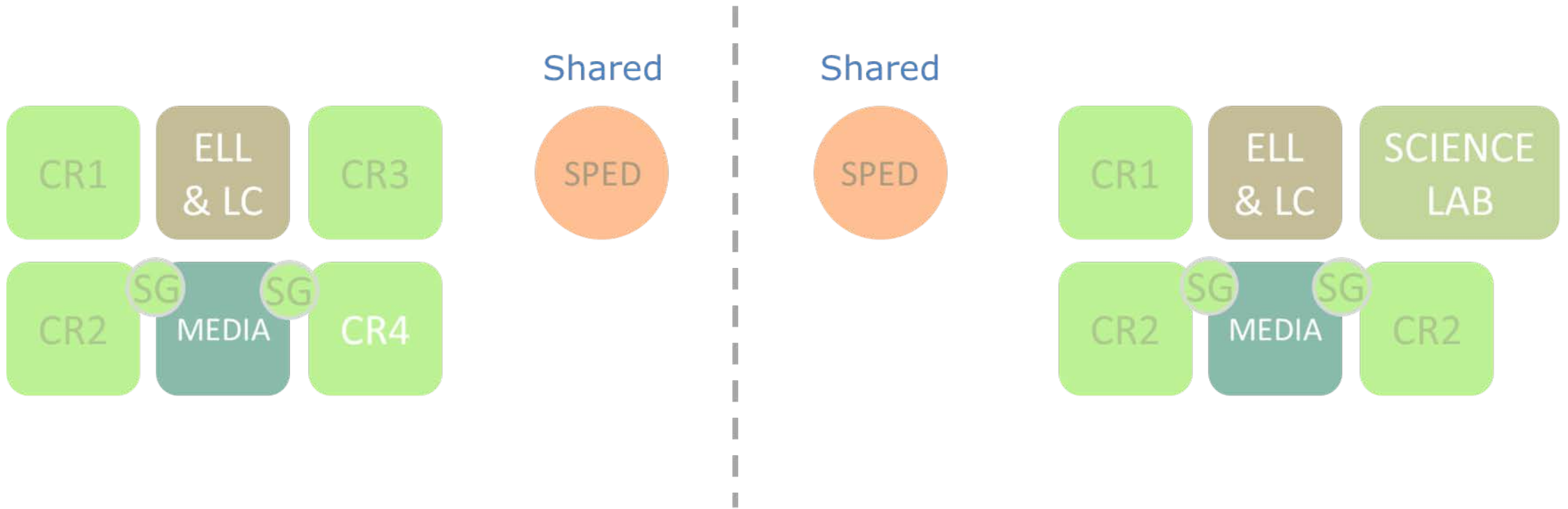
Oliver Partnership School

| SMMA



Educational Planning

Neighborhoods/HUBS/Pods/Teams/Learning Commons



OPS

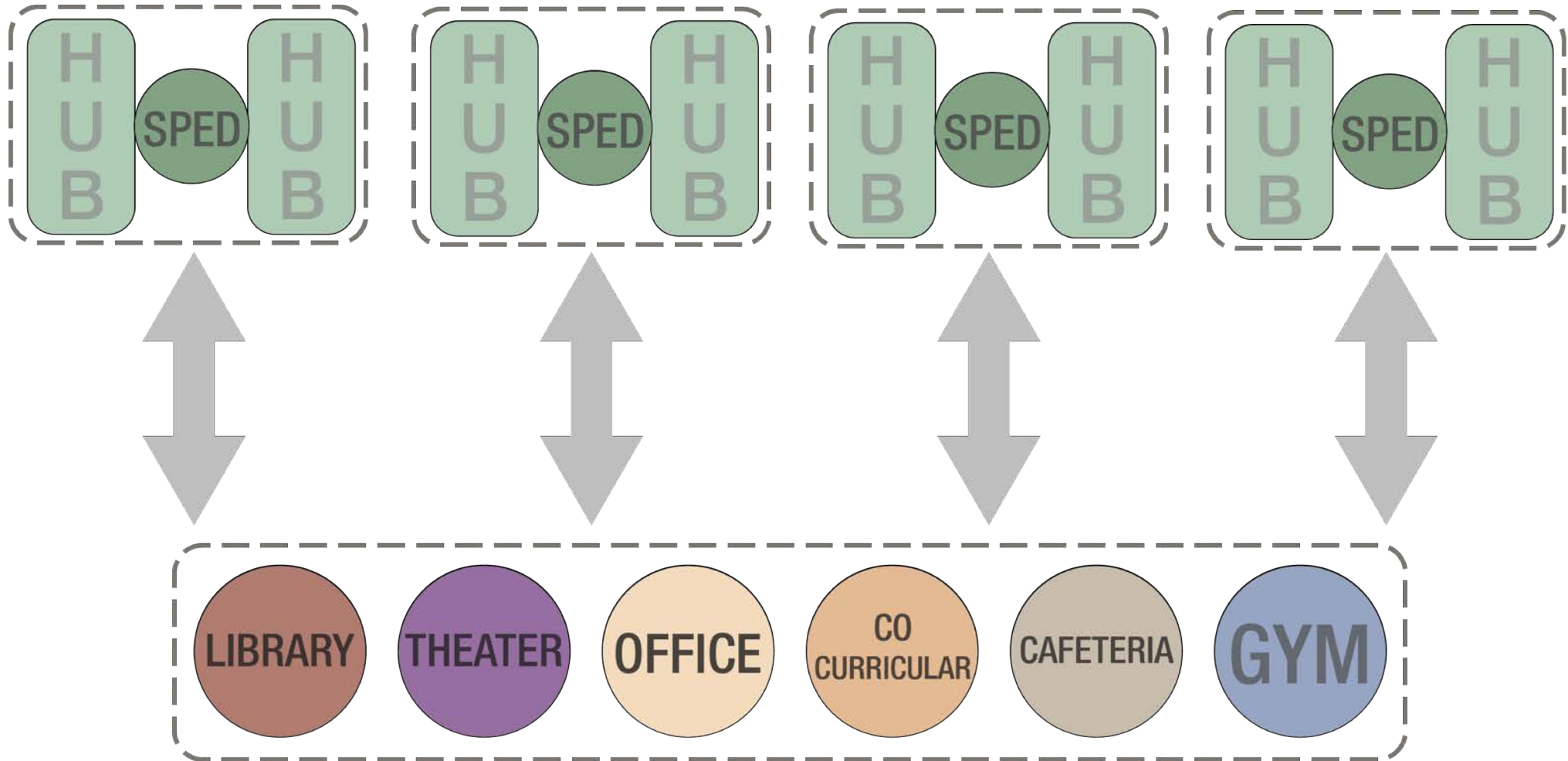
Grade Levels K-5 (6 Similar)

UAO

Grade Levels 7 and 8

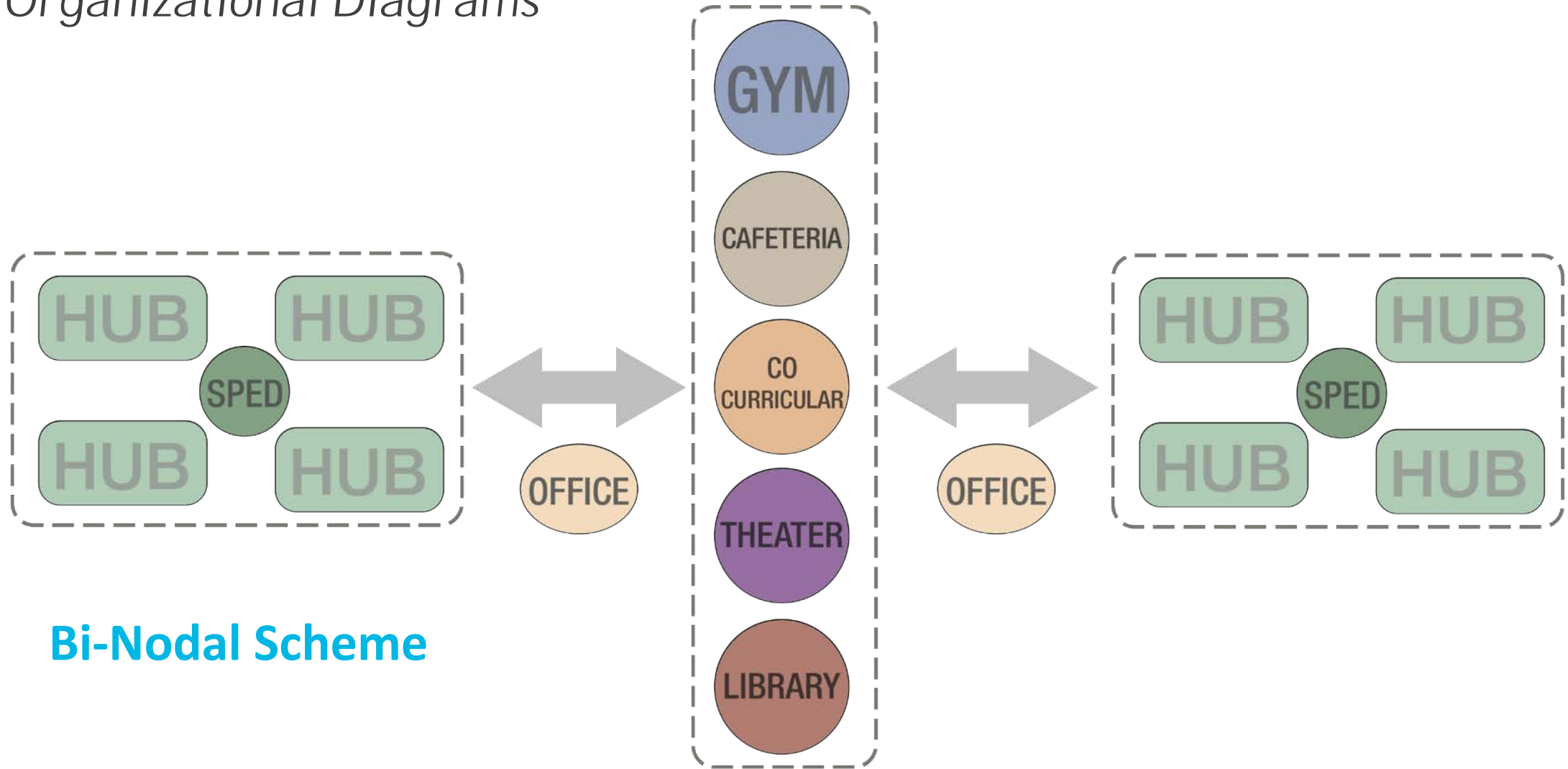
Educational Planning

Organizational Diagrams Spine Scheme



Educational Planning

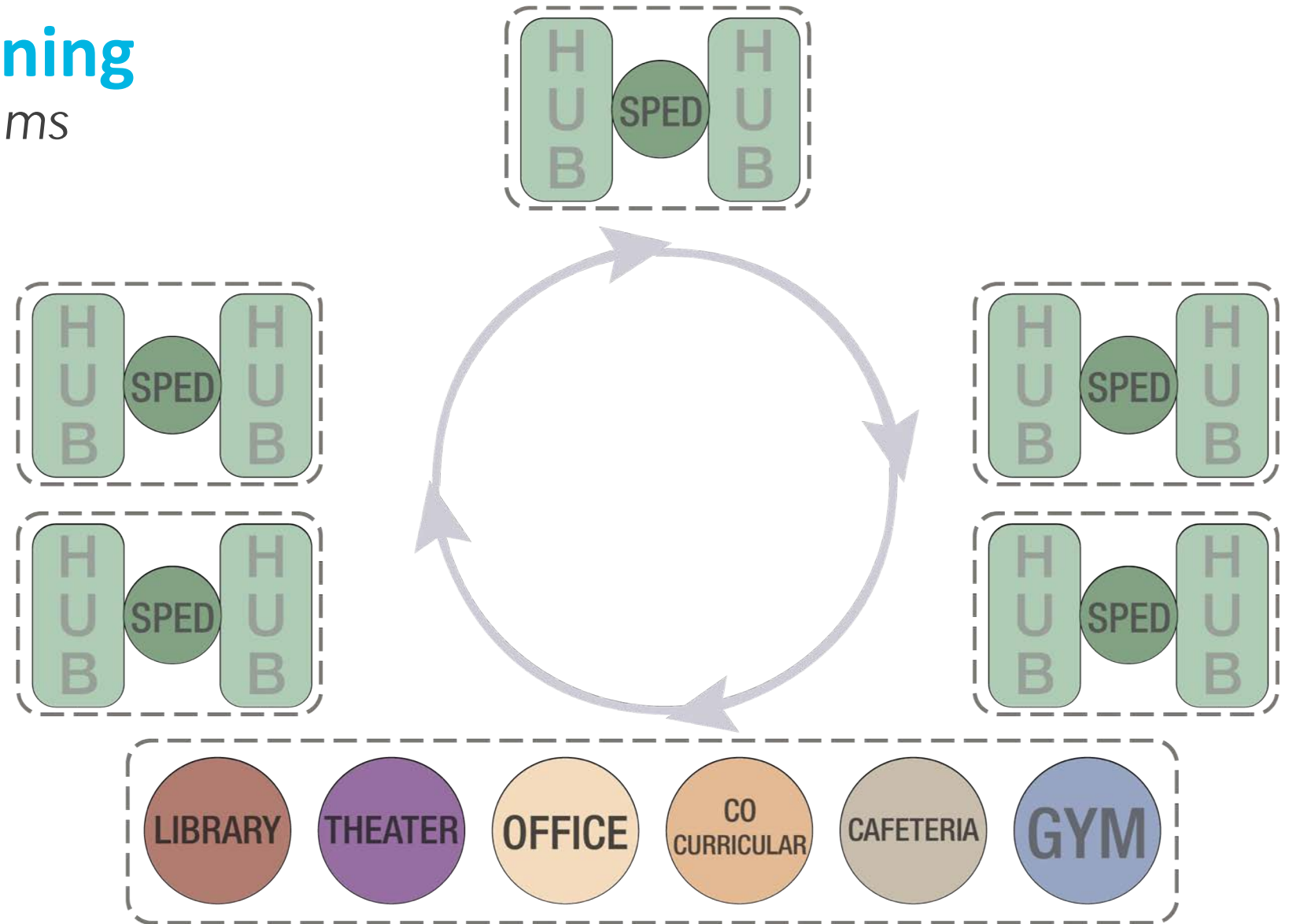
Organizational Diagrams



Bi-Nodal Scheme

Educational Planning

Organizational Diagrams



Courtyard Scheme

Educational Planning

Stacking Diagrams

5

4

3

2

1

K

OPS

8
MATH SS SCI ELA

7
MATH SS SCI ELA

6

UAO

Educational Planning

Stacking Diagrams

Floors

3

4

5

8

2

2

3

7

1

K

1

6

OPS

UAO

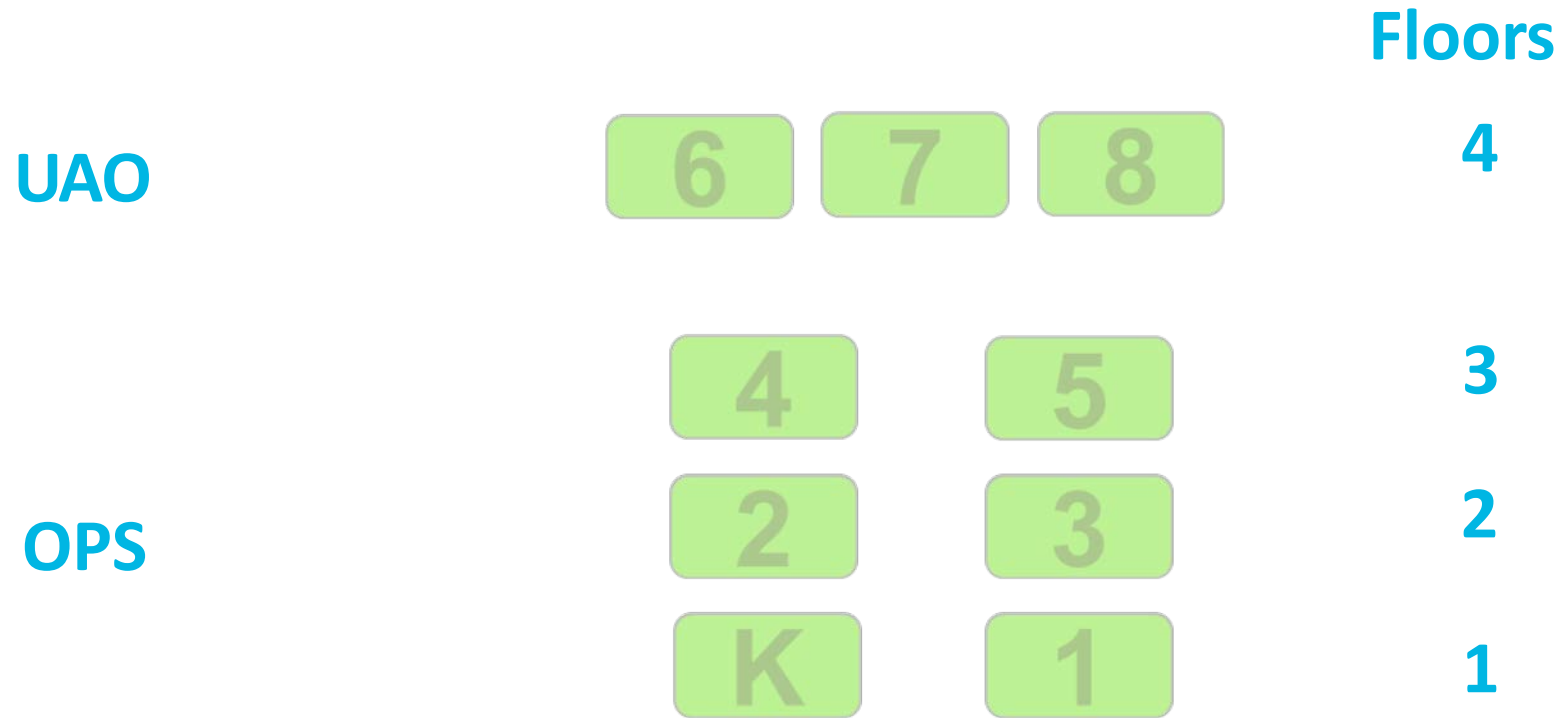
Educational Planning

Stacking Diagrams



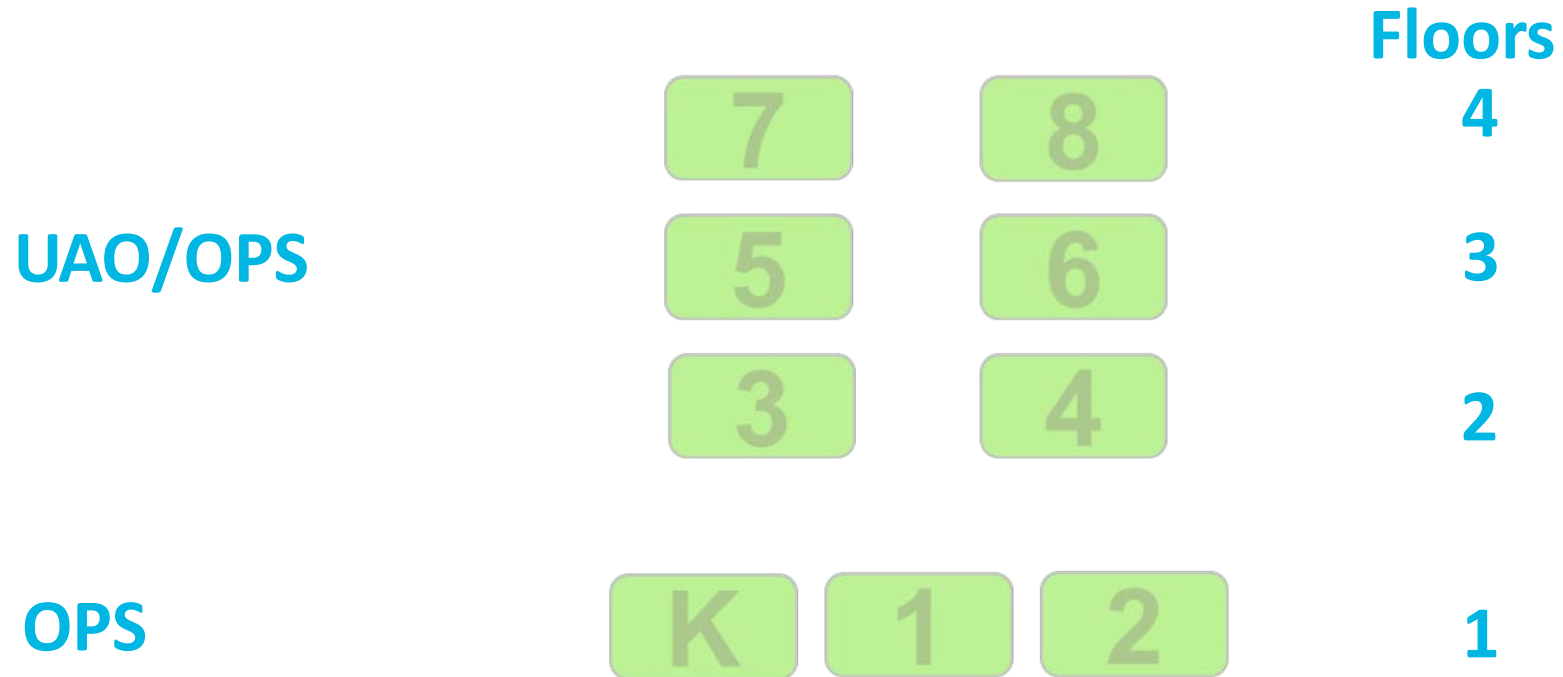
Educational Planning

Stacking Diagrams



Educational Planning

Stacking Diagrams



Conceptual Planning for Oliver School Site

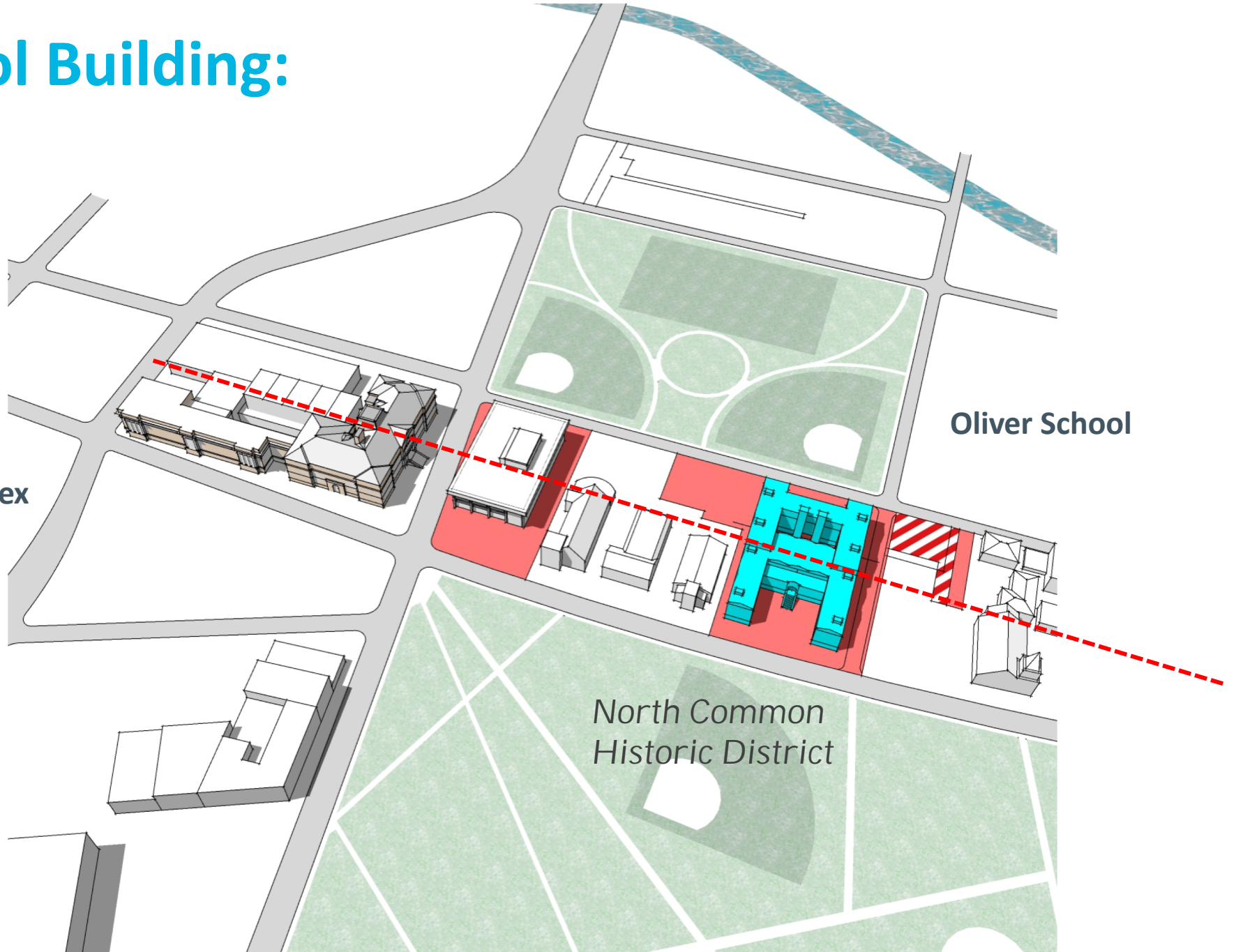


Oliver School Building:

North Commons
Education Complex

Oliver School

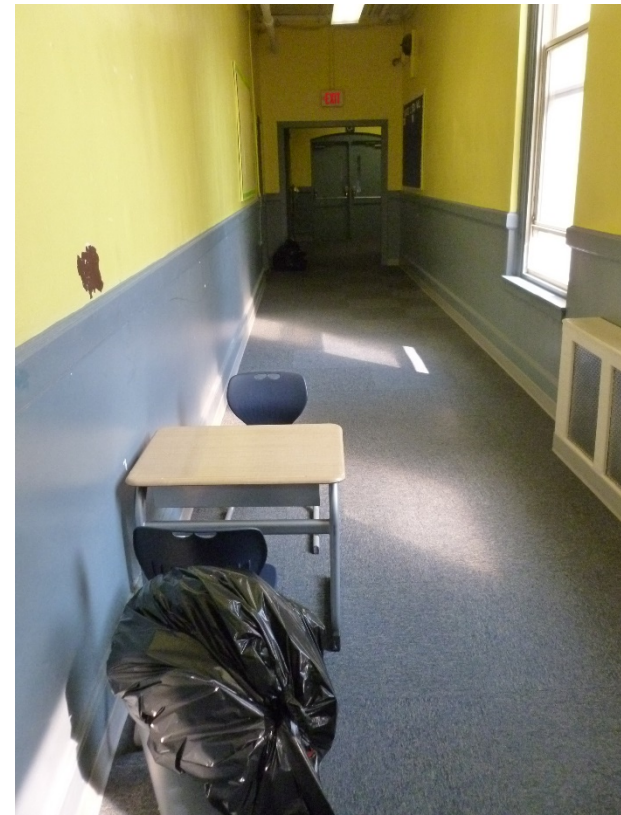
North Common
Historic District



Oliver School Building

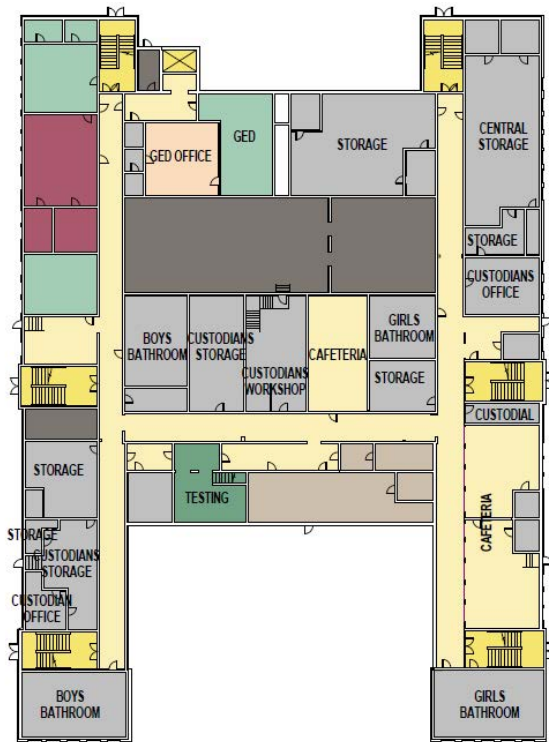


Oliver School Building

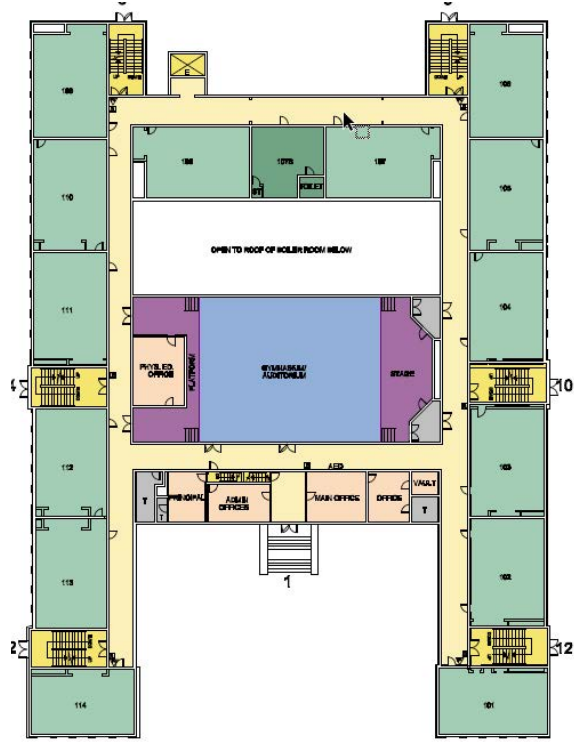


Oliver Partnership School Floor Plans

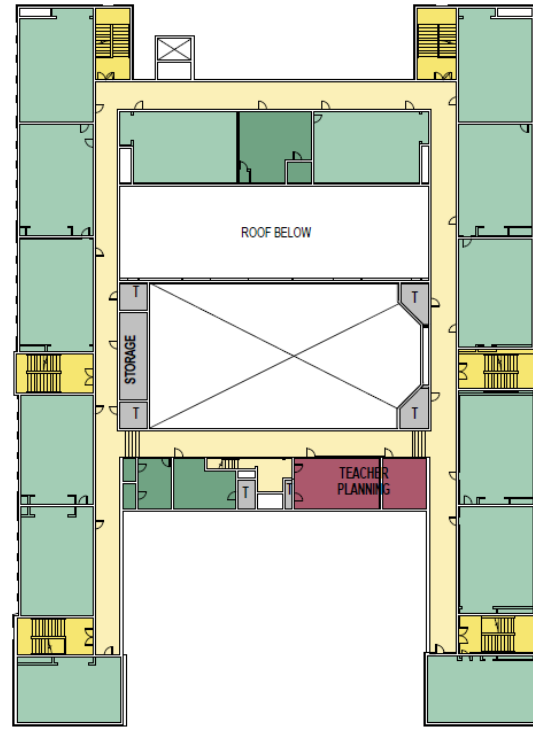
Existing program Plans



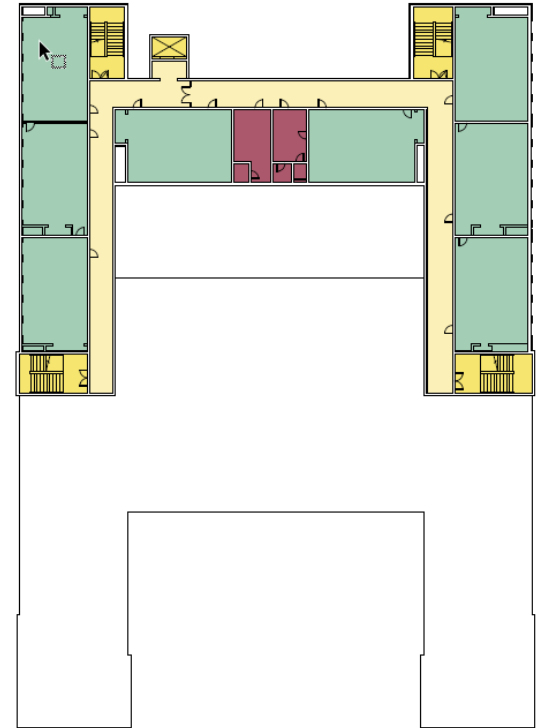
LL



1



2

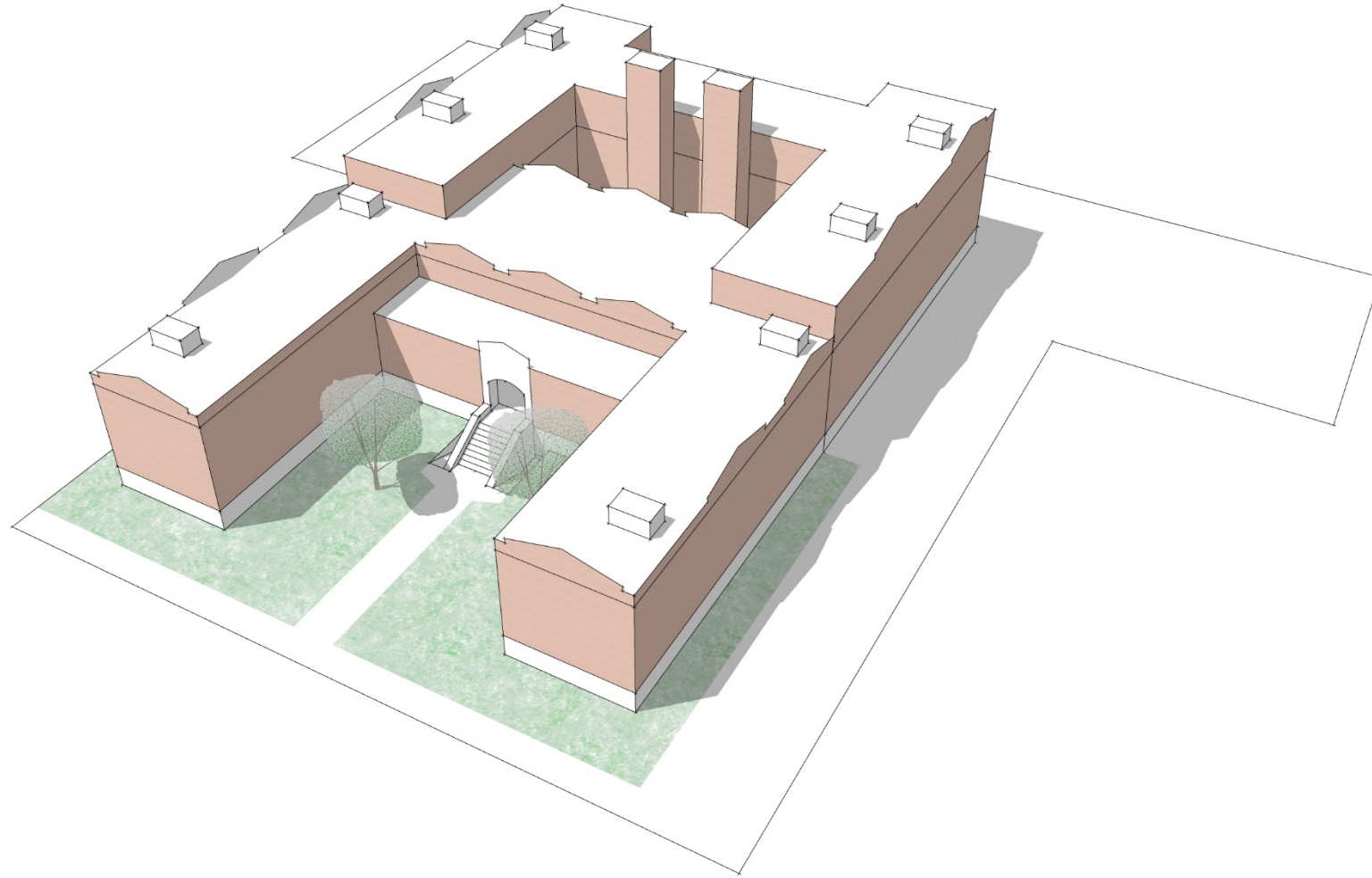


3

Oliver School Site PDP Options

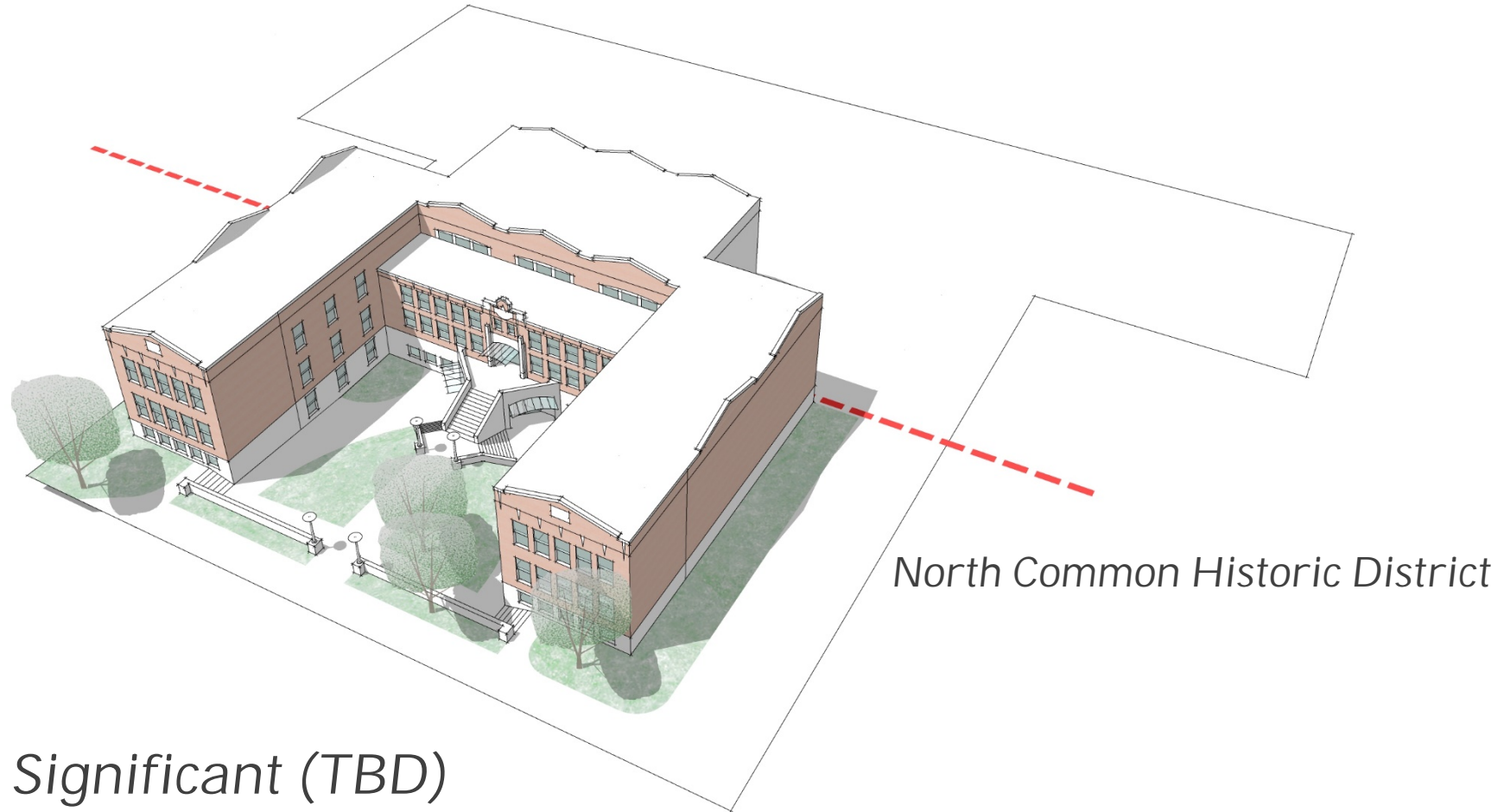
- Code Upgrades Only (Accessibility, Life Safety, Seismic, Energy)
- Renovations (Code plus minor Academic upgrades *without* additions)
- Additions & Renovations (Code plus Major Academic upgrades with additions)
- All New Construction (?)

Conceptual Planning for Oliver School Site

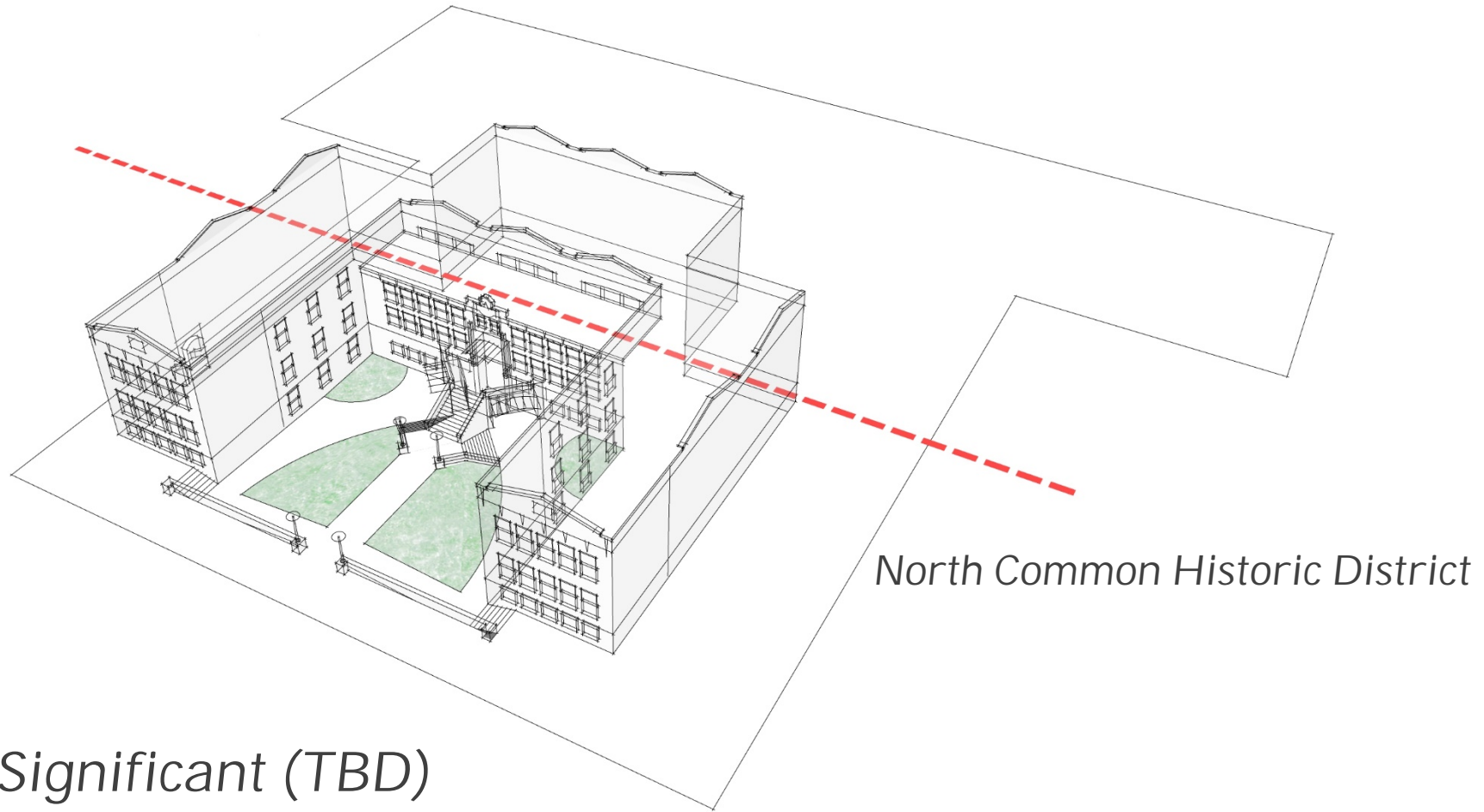


Existing

Conceptual Planning for Oliver School Site

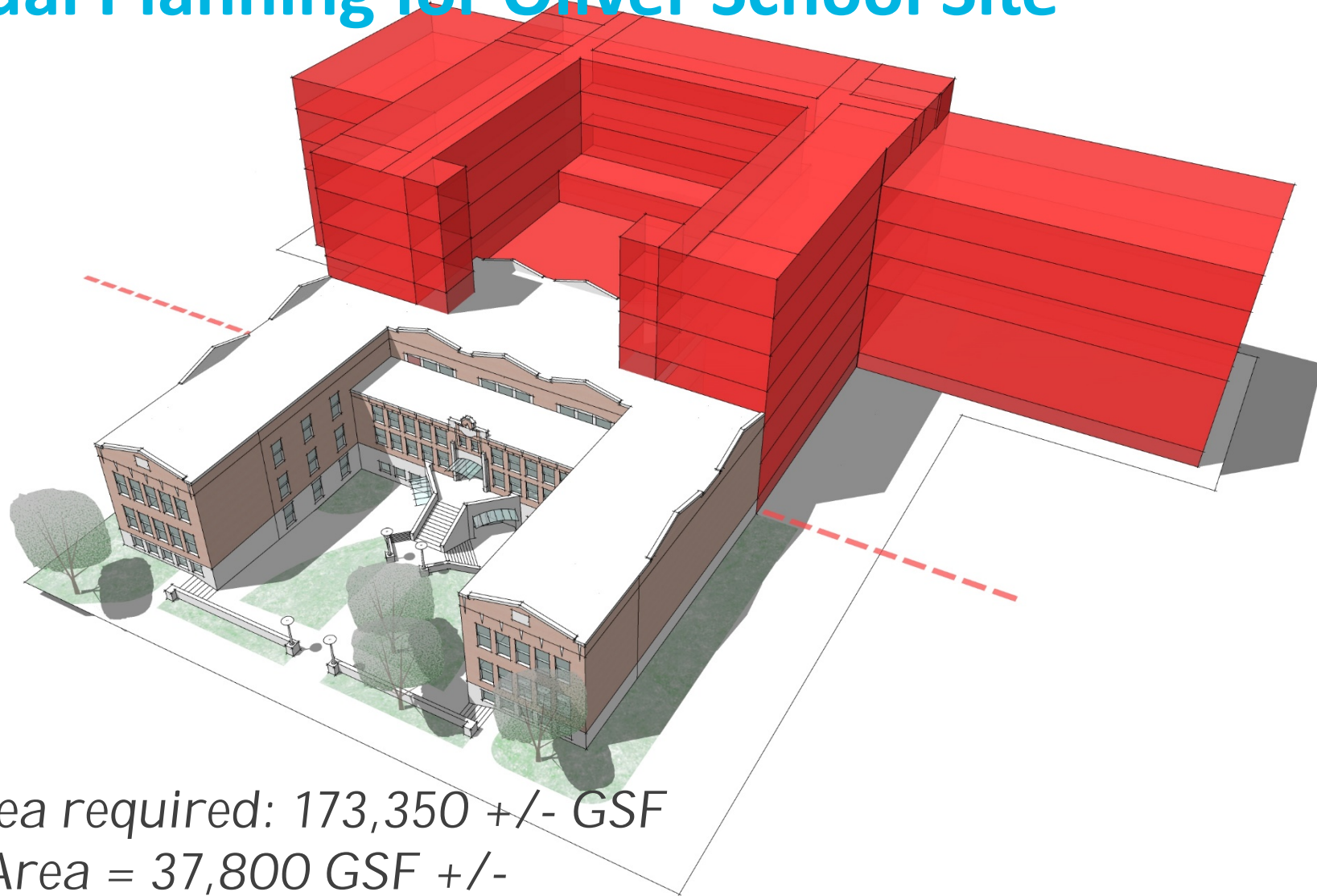


Conceptual Planning for Oliver School Site



Historically Significant (TBD)

Conceptual Planning for Oliver School Site



Potential area required: 173,350 +/- GSF

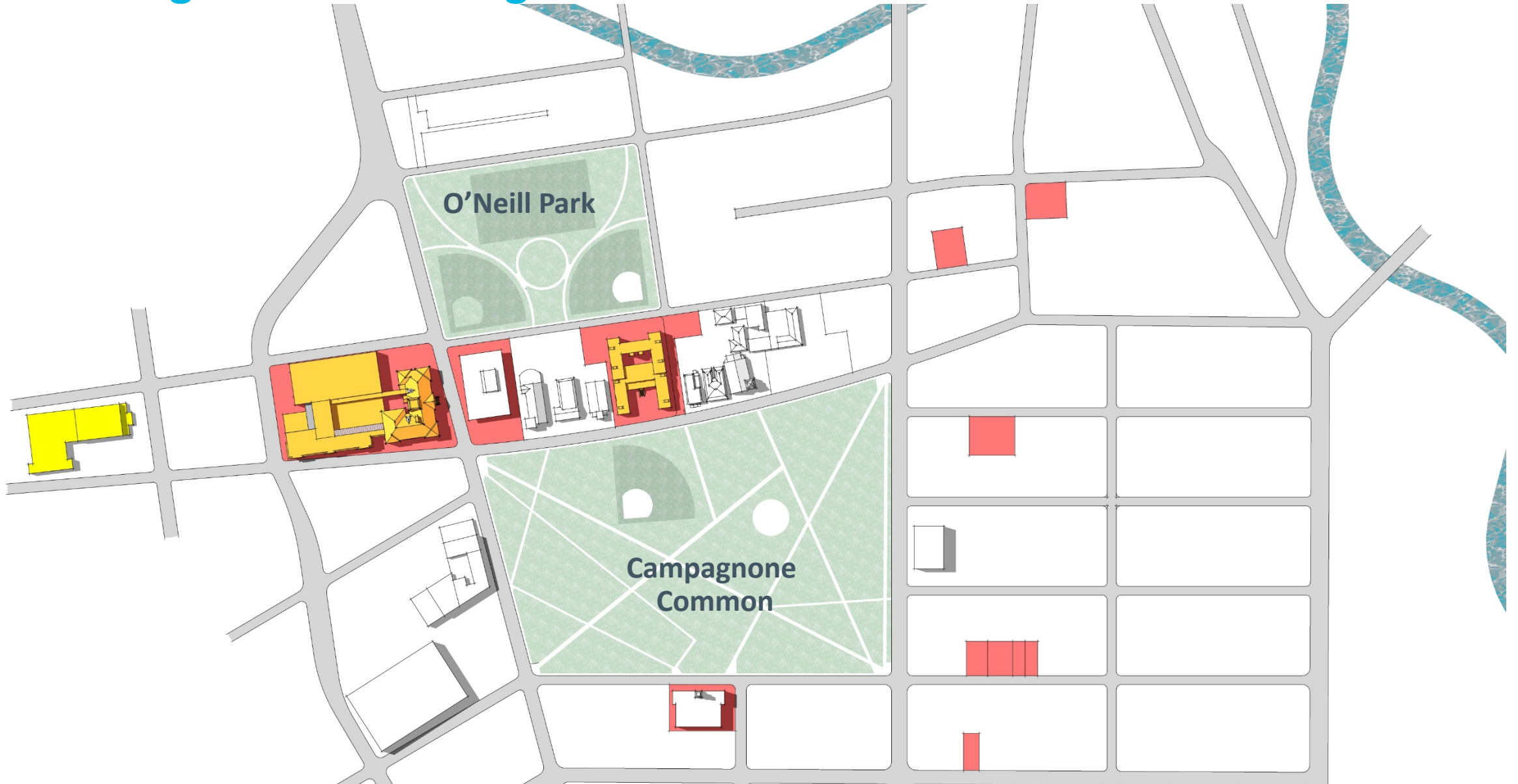
Renovated Area = 37,800 GSF +/-

New Area =

Oliver School Site Considerations

- Requires Swing Space for Children
- Full Program Does Not Fit
- Is Demolition Acceptable?
- Unique Renovation Costs – Very Constrained Floor to Floor and Other Concerns
- No “Site” Program Capacity
- Program “Fit” and negotiations with MSBA
- Long Term Benefit for “Other” City Uses?

Swing Space: Locating Students During Construction



Discussion



OLIVER SCHOOL

OLIVER PARTNERSHIP SCHOOL
BOY AND GIRL SCOUTS
REGISTRATION
SEP 3 330-500

City of Lawrence

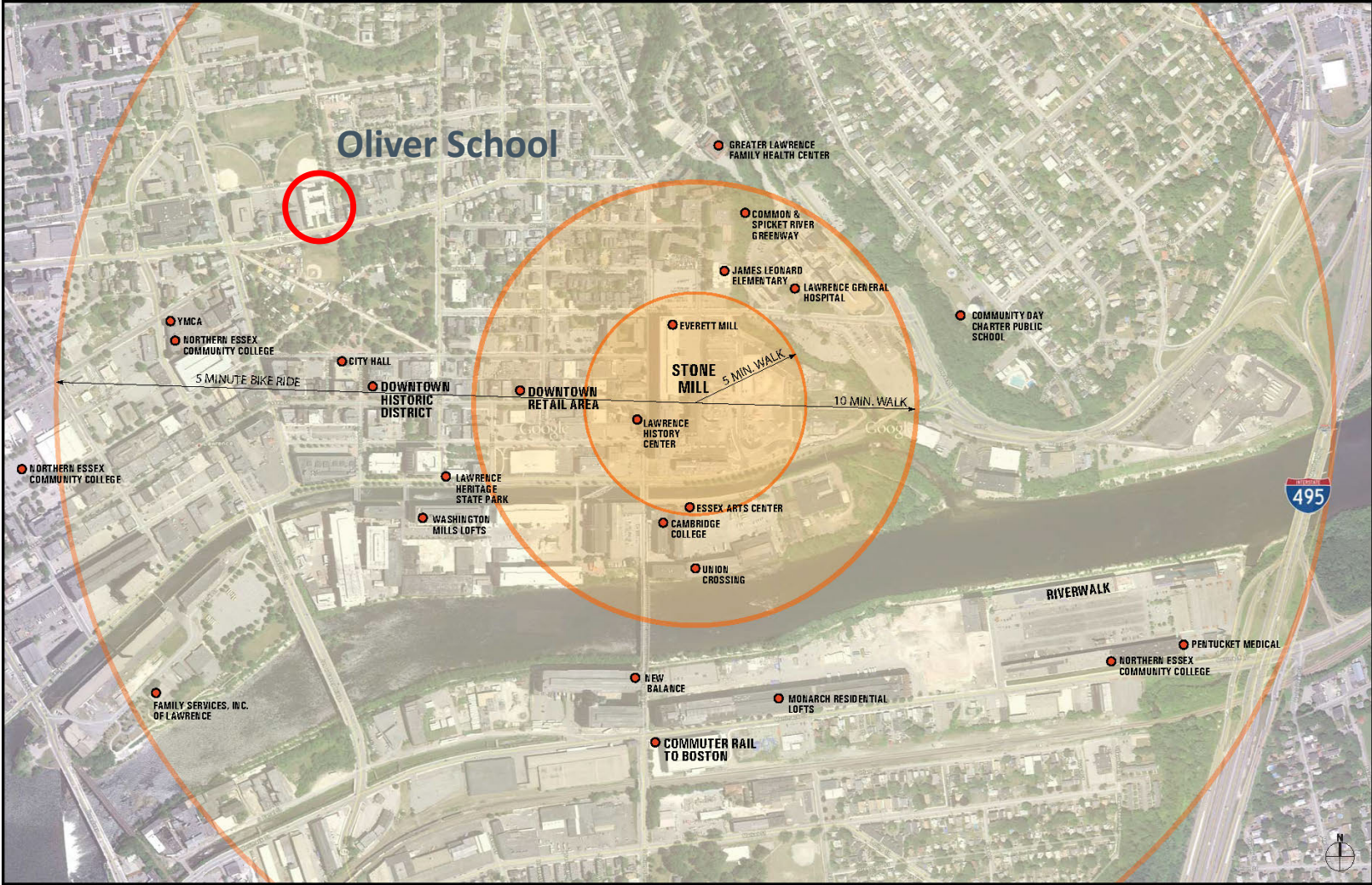
Oliver Partnership School

SMMA



Stone Mill:

< Half Mile to Stone Mill



Location Map

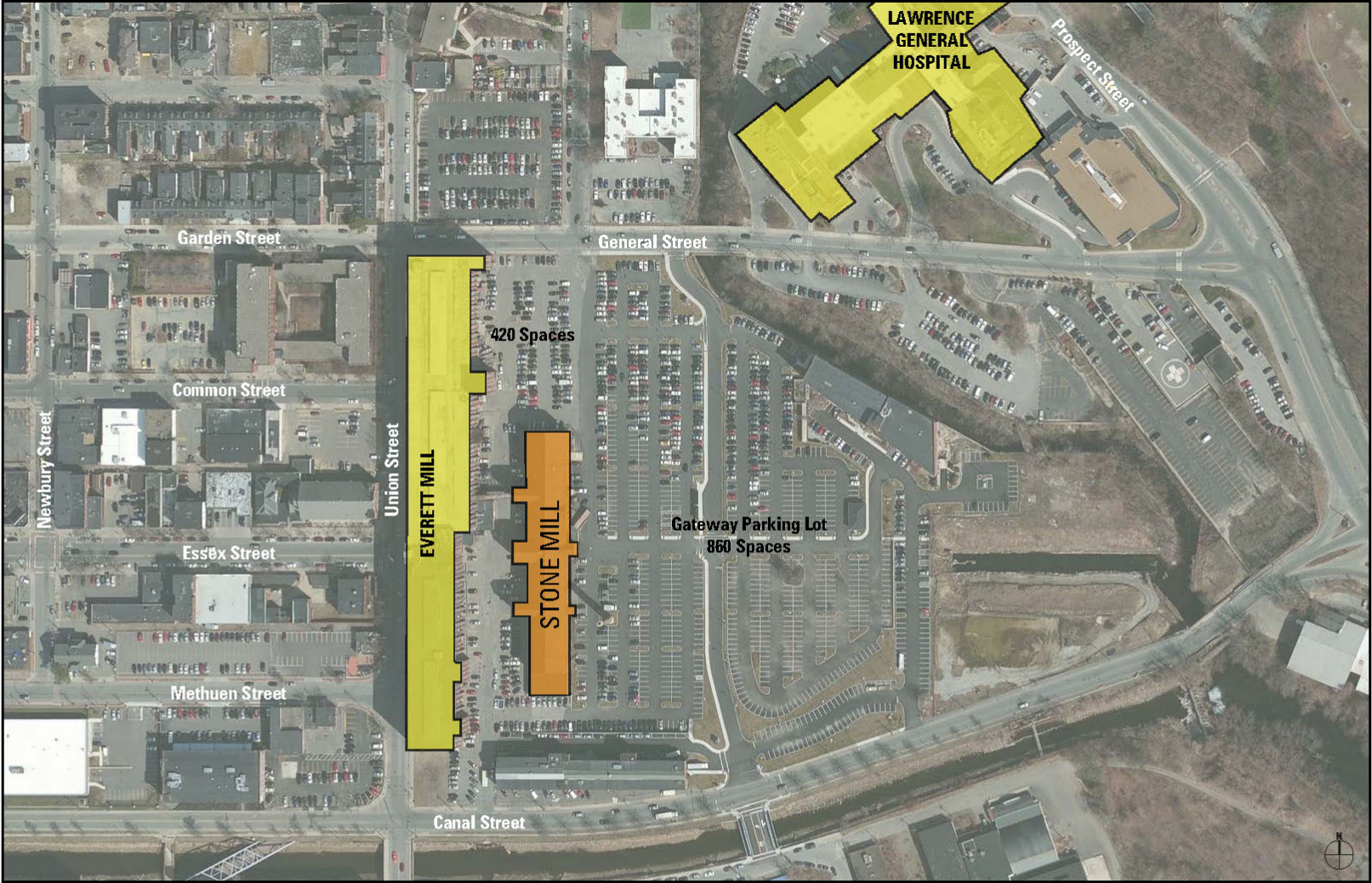
Stone Mill Building



Stone Mill Overview & Impressions



Stone Mill Overview & Impressions



North Canal Historic District

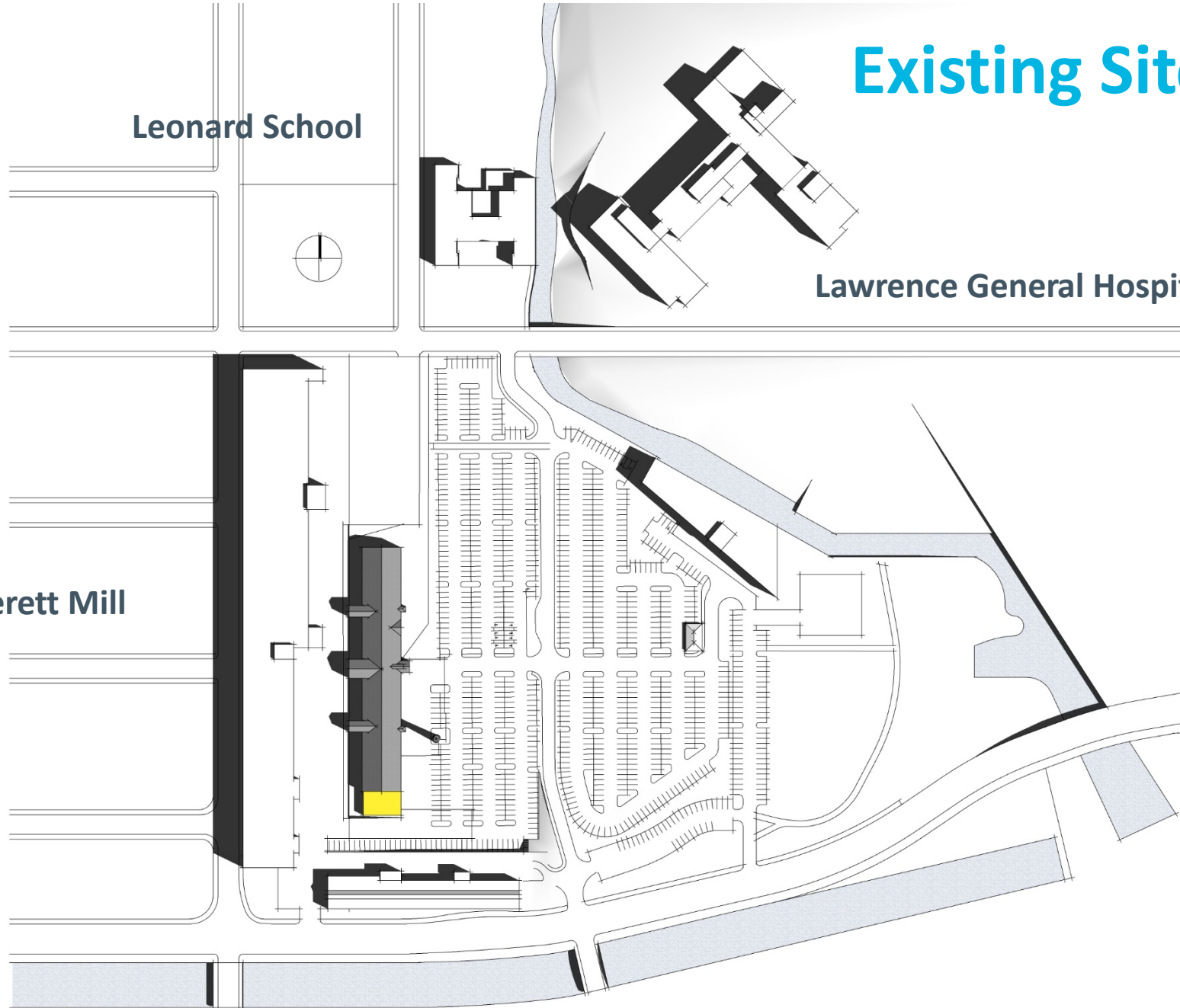
Neighborhood Map

Existing Site

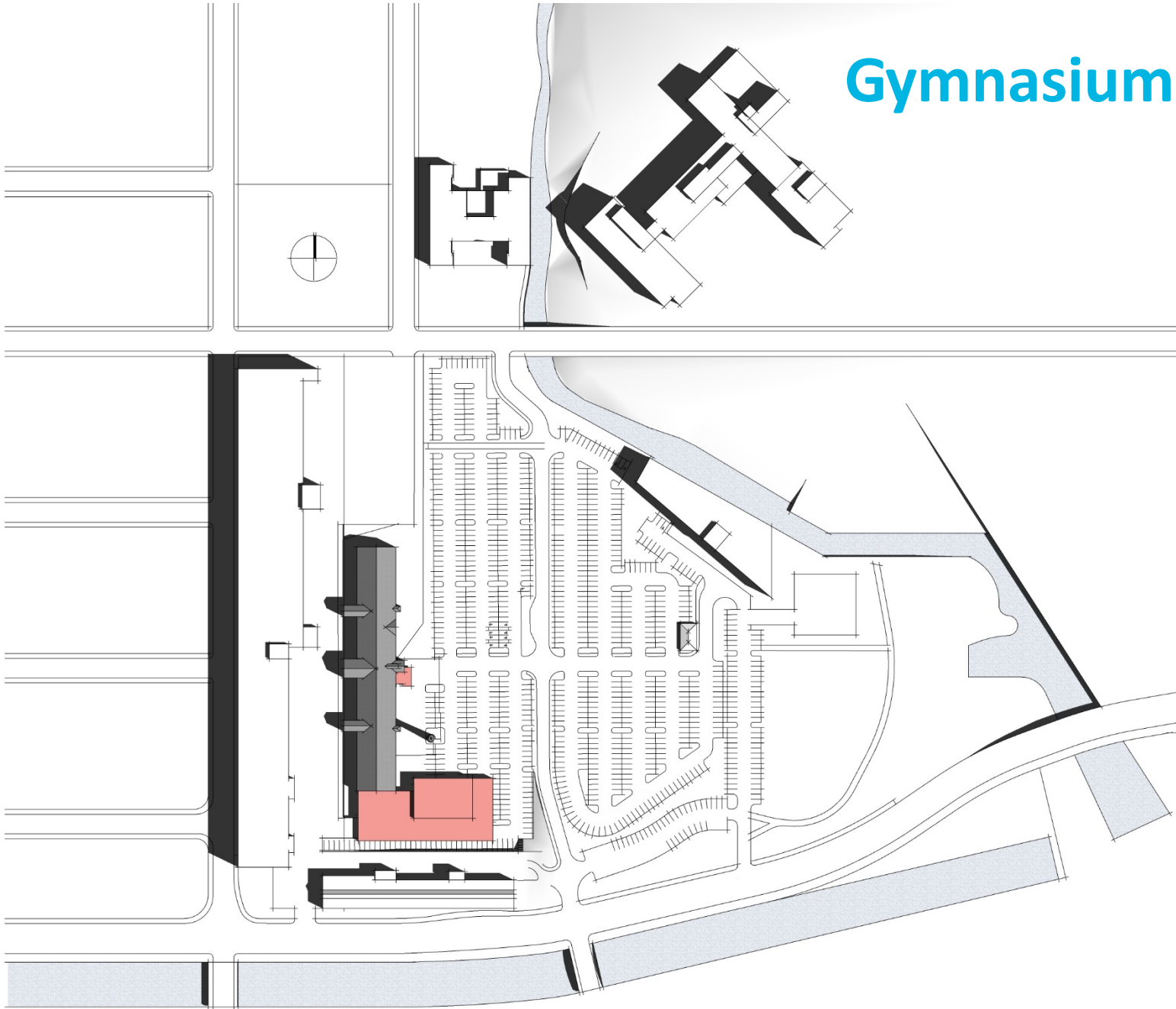
Leonard School

Lawrence General Hospital

Everett Mill

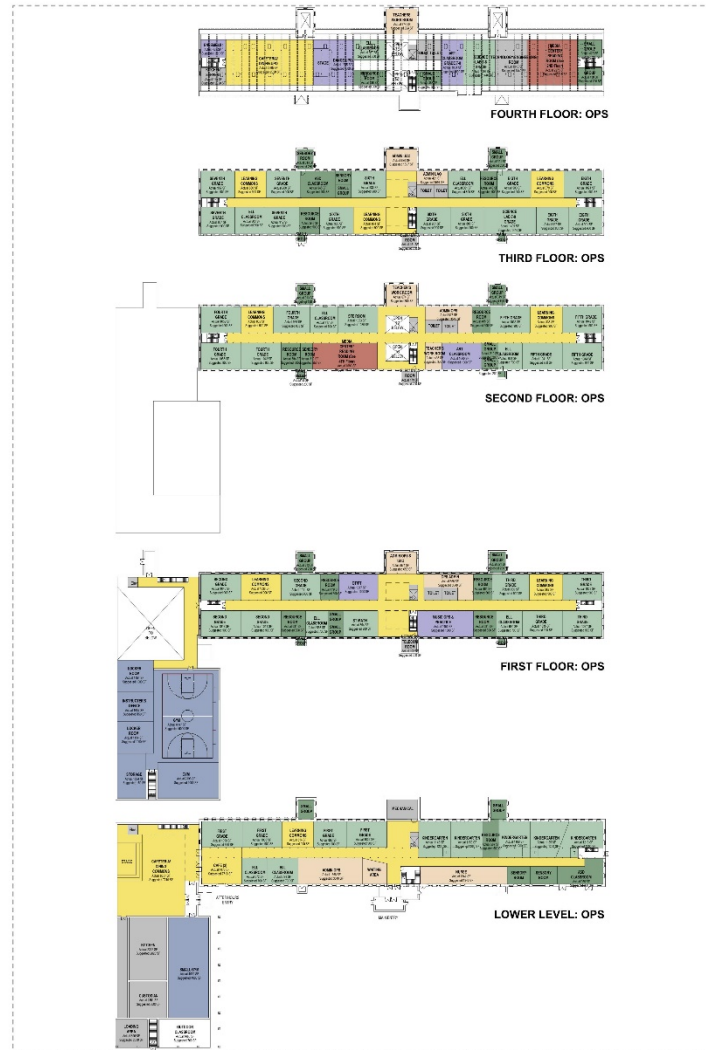


Gymnasium Option 3

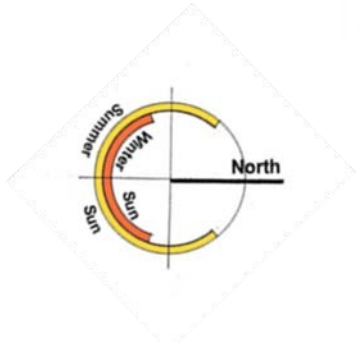
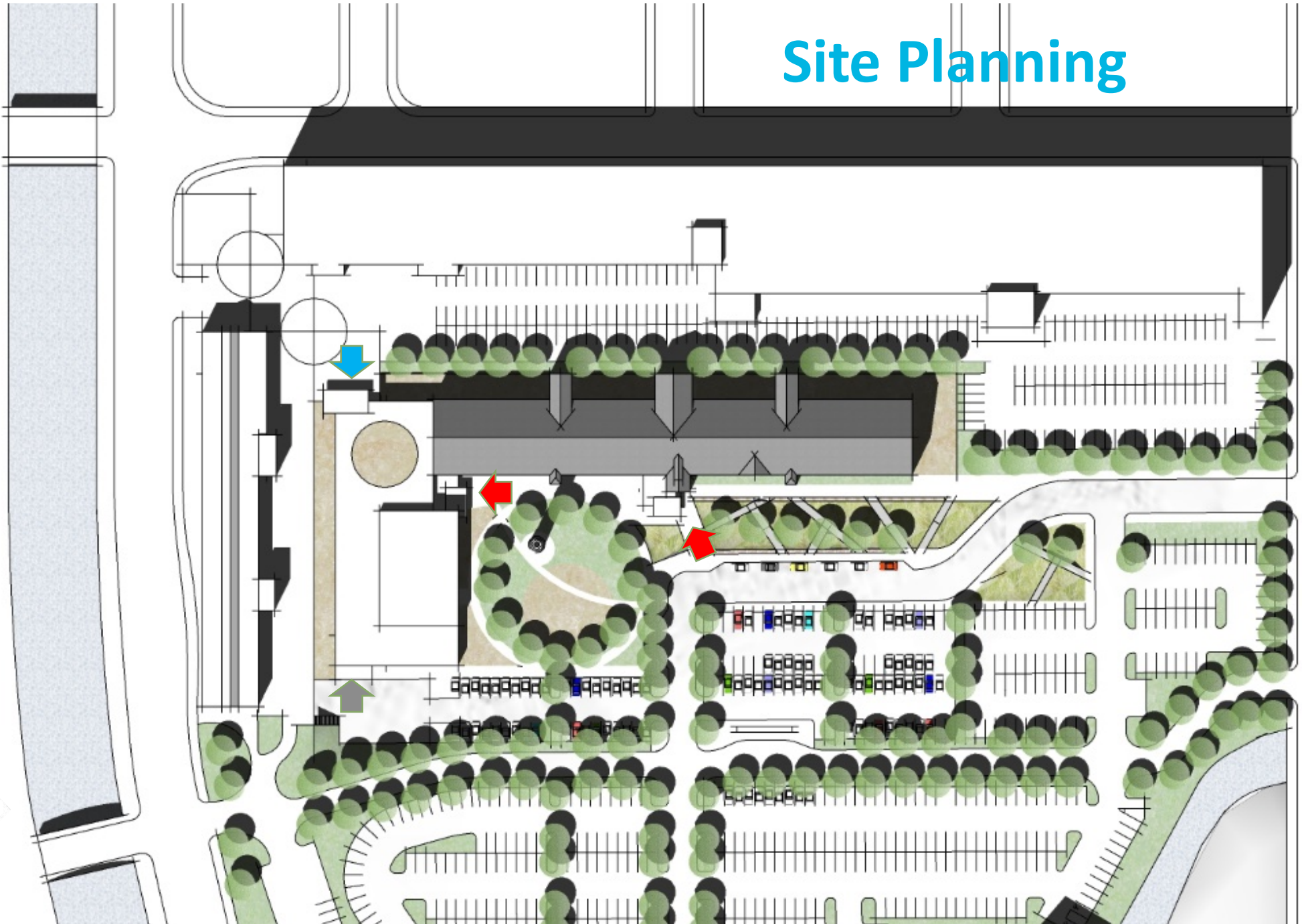


Oliver Elementary School

MSBA PDP Options: Program Plans



Site Planning

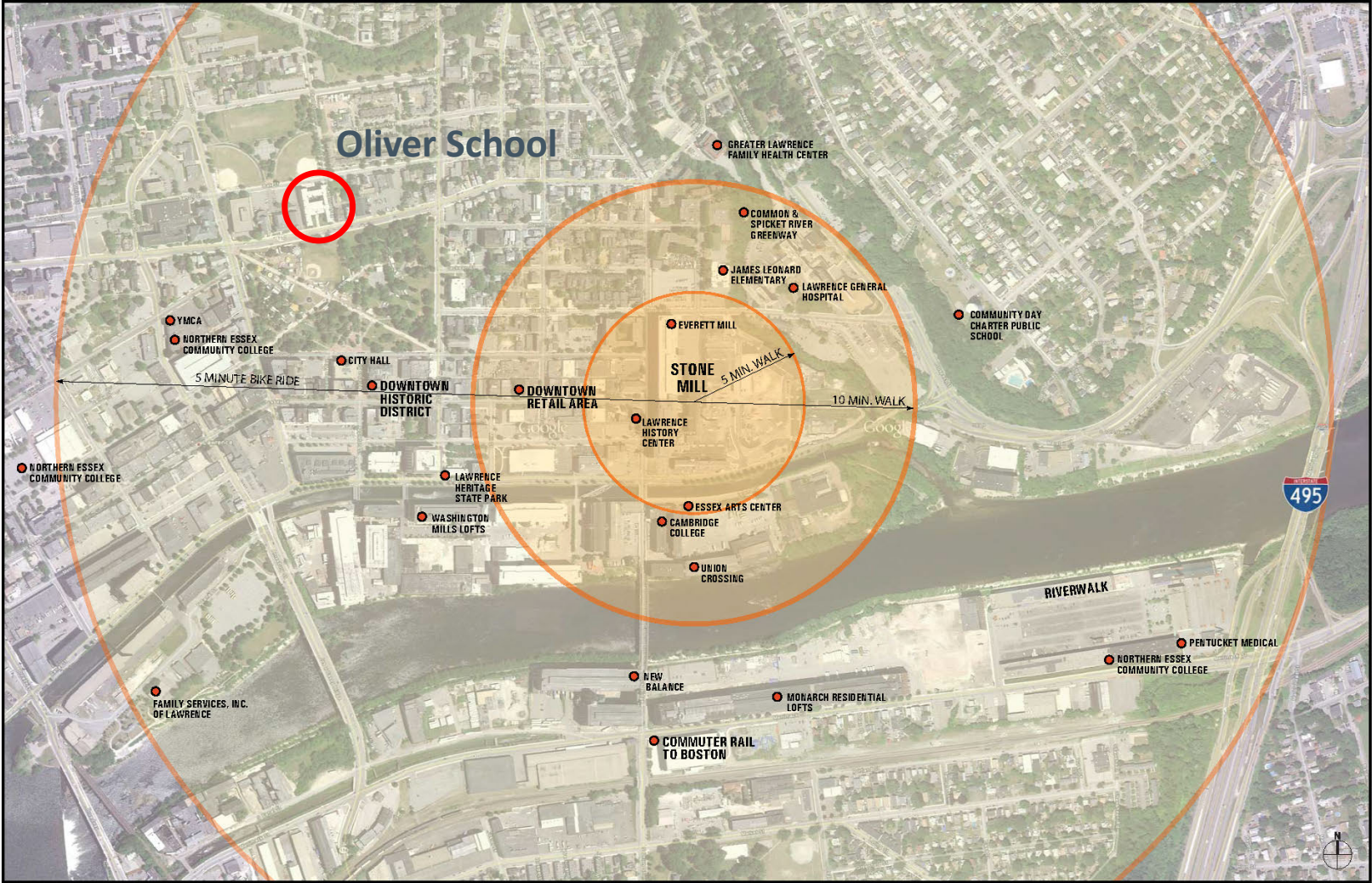


Site Planning Strategies



Stone Mill: Transportation

< Half Mile to Stone Mill



Location Map

Stone Mill: Transportation

< *Half Mile to Stone Mill*

Current Oliver School (OPS & UPO) Attendance Zone Students:

- 0 > .5 Miles: 102 Students
- .5 > 1 Miles: 426 Students
- 1 > 1.5 Miles: 248 Students
- 1.5 > 2 Miles: 5 Students
- > 2 Miles: 0 Students

Stone Mill Site Considerations

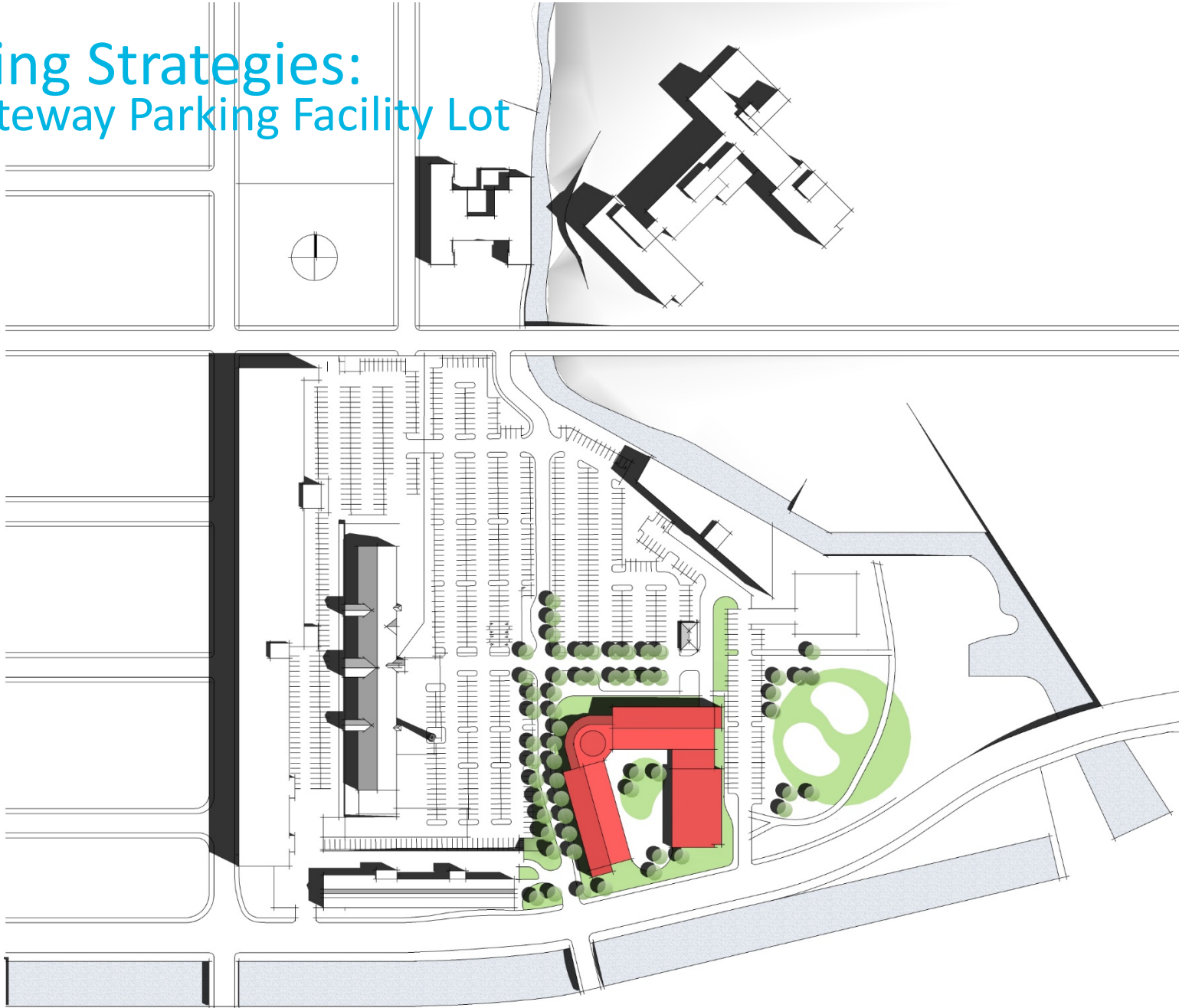
- Exciting and Positive Reuse of Iconic City Architecture
- Positive Impact to City Gateway (Social, Environmental and Visual)
- Purchase costs
- Unique Renovation Costs
- Potential Schedule Impacts
- Site Program Capacity
- Parking, Traffic & Mobility Space
- Program “Fit” and negotiations with MSBA
- Site Environmental

Alternative Site Option Review

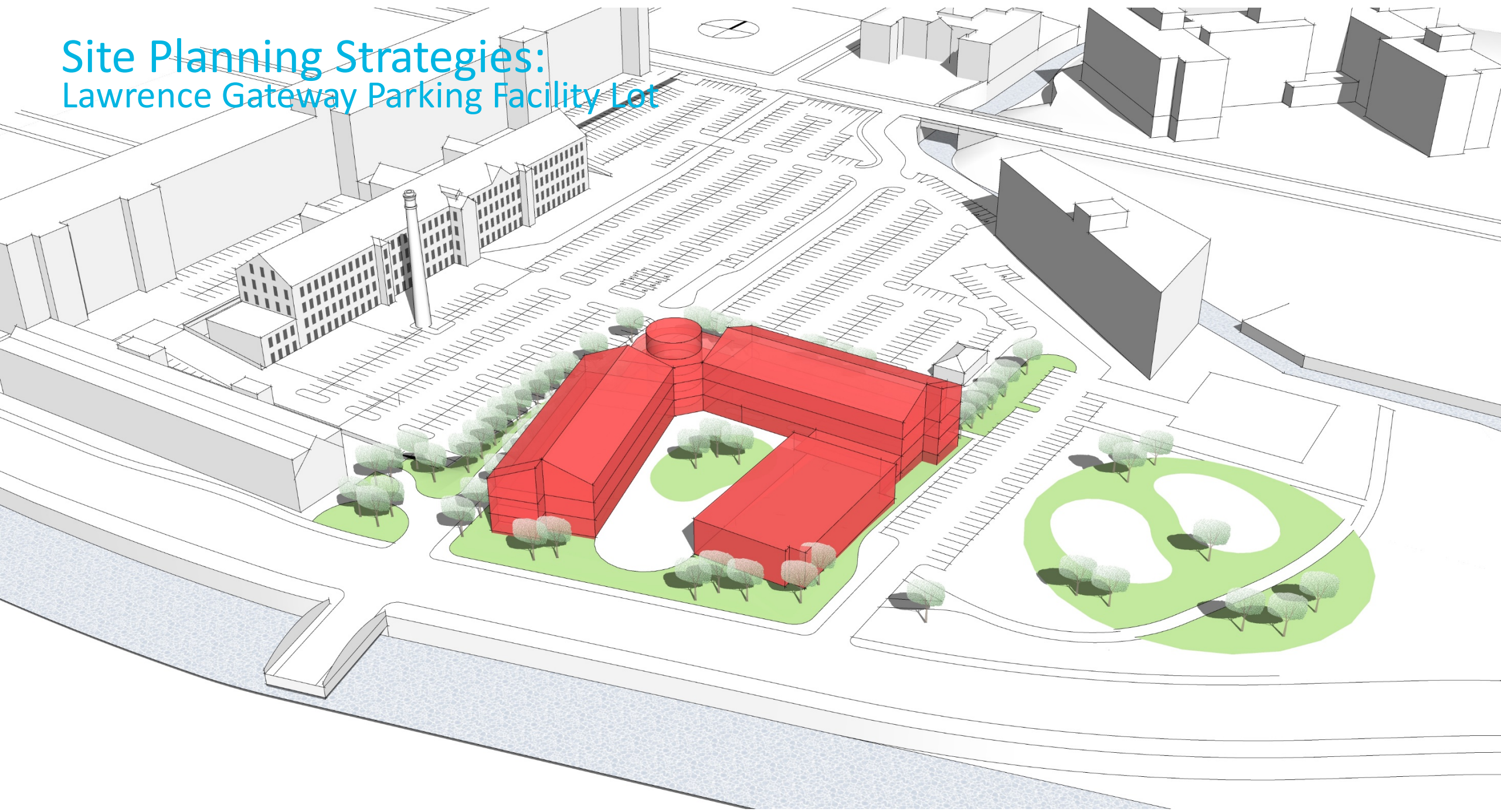
- Lawrence Gateway Parking Facility Lot



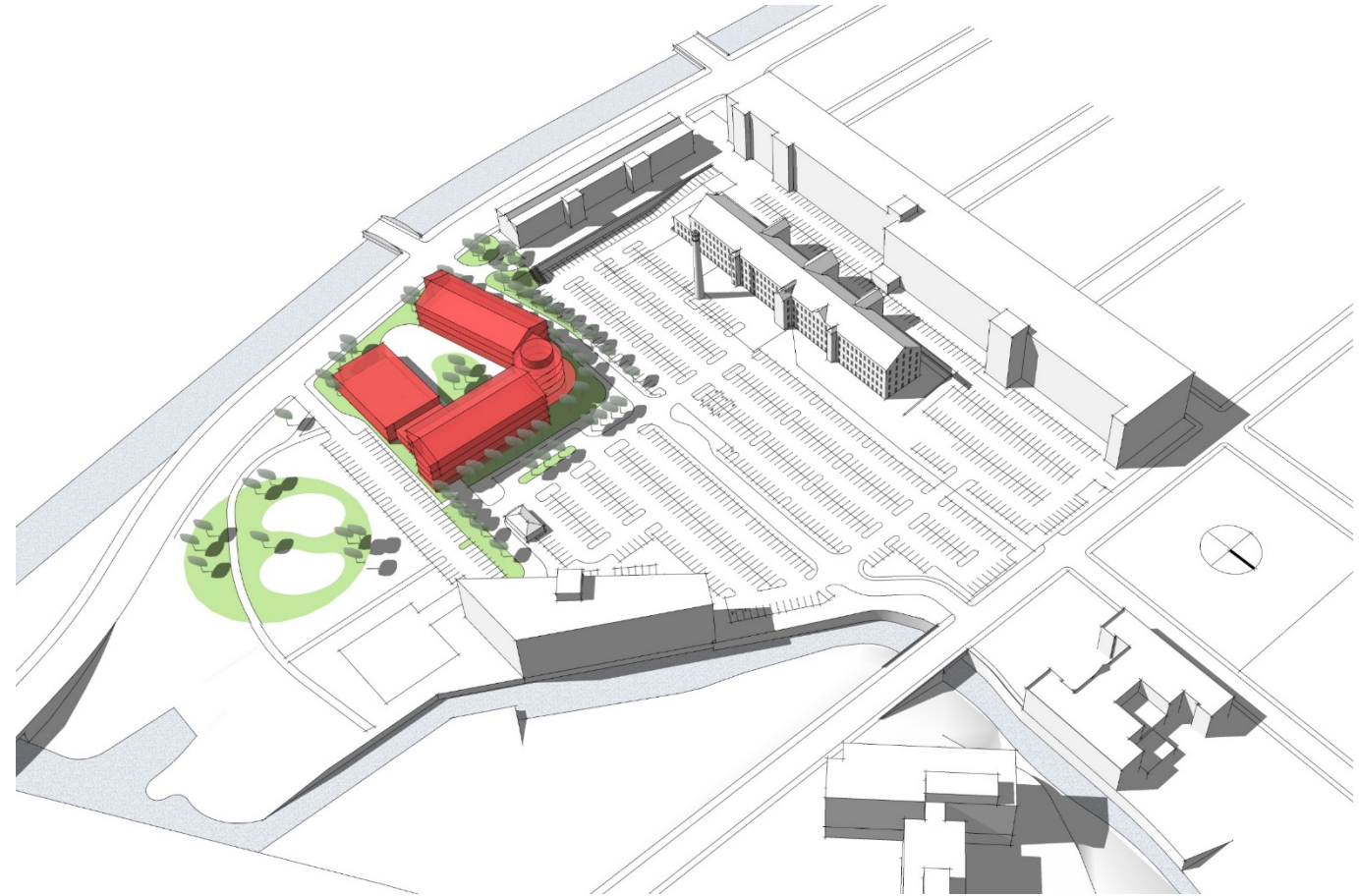
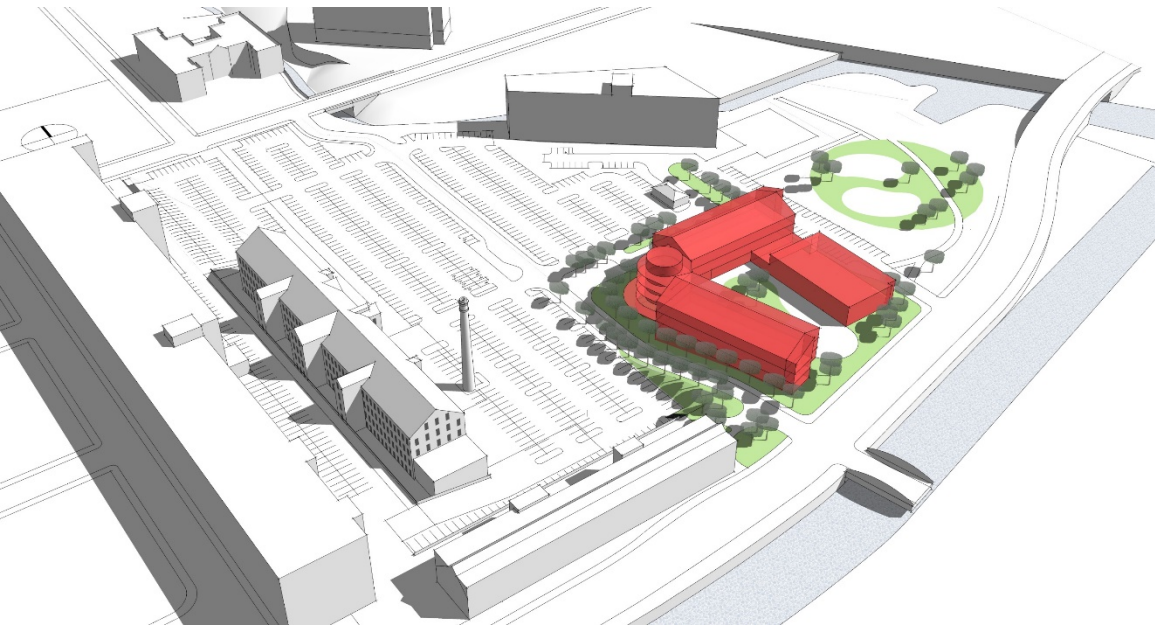
Site Planning Strategies: Lawrence Gateway Parking Facility Lot



Site Planning Strategies: Lawrence Gateway Parking Facility Lot



Site Planning Strategies: Lawrence Gateway Parking Facility Lot



Gateway Parking Facility Site Considerations

- Positive Impact to City Gateway (Social, Environmental and Visual)
- No Purchase Costs
- Schedule Benefits
- Program Specific “Fit”
- Site Program Capacity
- Parking, Traffic & Mobility Space
- Site Environmental

Discussion



OLIVER SCHOOL

OLIVER PARTNERSHIP SCHOOL
BOY AND GIRL SCOUTS
REGISTRATION
SEP 3 330-500

Thank You



OLIVER SCHOOL

OLIVER PARTNERSHIP SCHOOL
BOY AND GIRL SCOUTS
REGISTRATION
SEP 3 330-500