

| SMMA

City of Lawrence

**Oliver Partnership
School**

LAE Meeting

December 9, 2020



Project Goals

In partnership with the....
Massachusetts School Building Authority (MSBA).

*Replace two existing schools (Oliver Partnership, grades 1-5,
and UP Academy Oliver, grades 6-8)...*

Into one consolidated Educational Complex, grades K-8.

*Ensure the new school supports the Lawrence Public Schools’
educational plan and 21st century learning.*

*Locate the school within the North Common District to
continue supporting students walking and biking to their
neighborhood school.*



Schematic Design Summary

In process of acquiring four parcels of land to support new school(s) on the Oliver School site – City Council approval pending.

Hired Construction Management team (Consigli) – supporting SD estimating process

Able to accommodate UAO (625 Students) and

OPS (375 Students) Educational Plans (1,000 Students total)

Located within the *North Common District to continue supporting students walking and biking to their neighborhood school.*

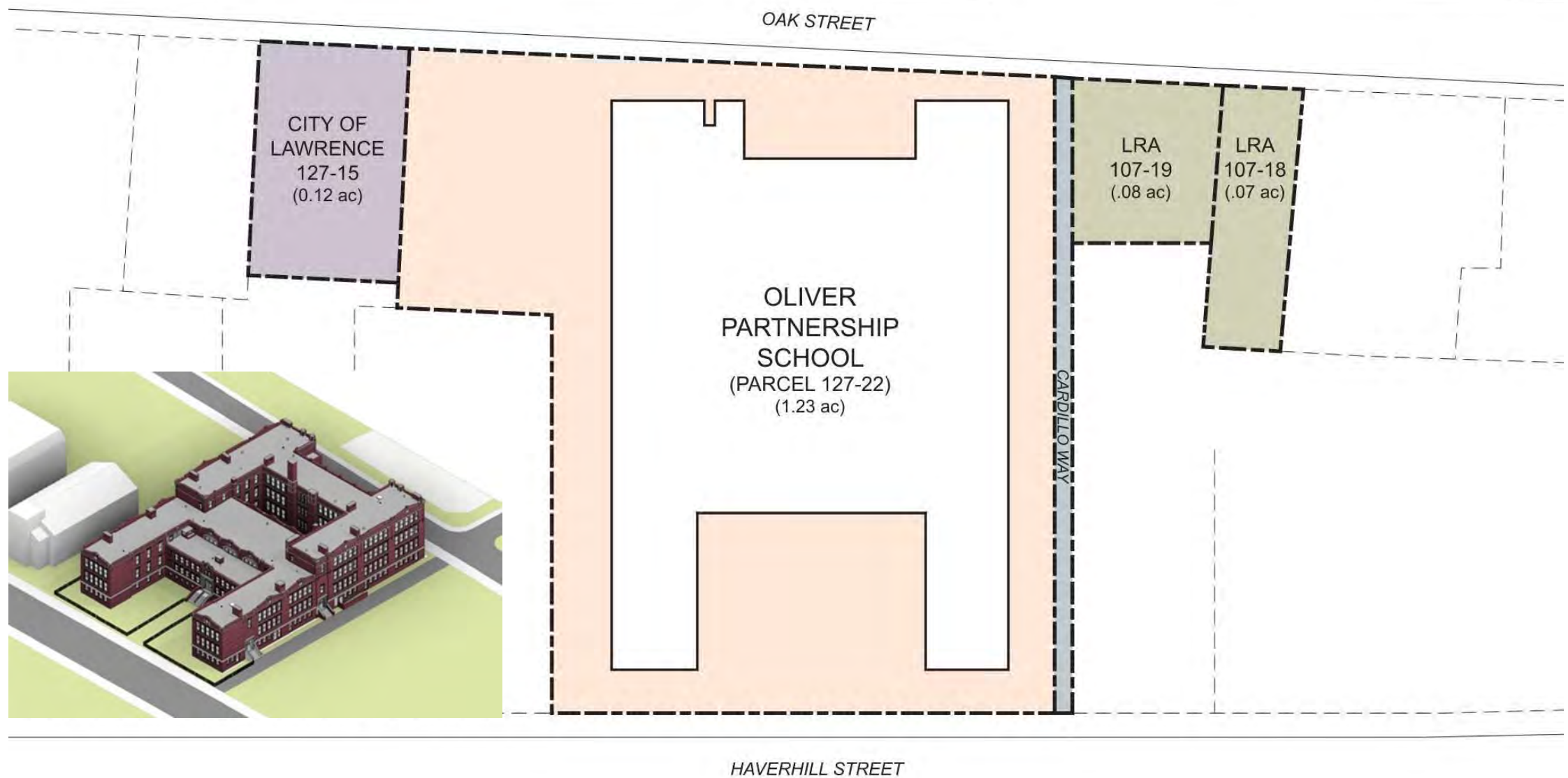
Historically sensitive design.

SPED and EL programs submitted to DESE for review

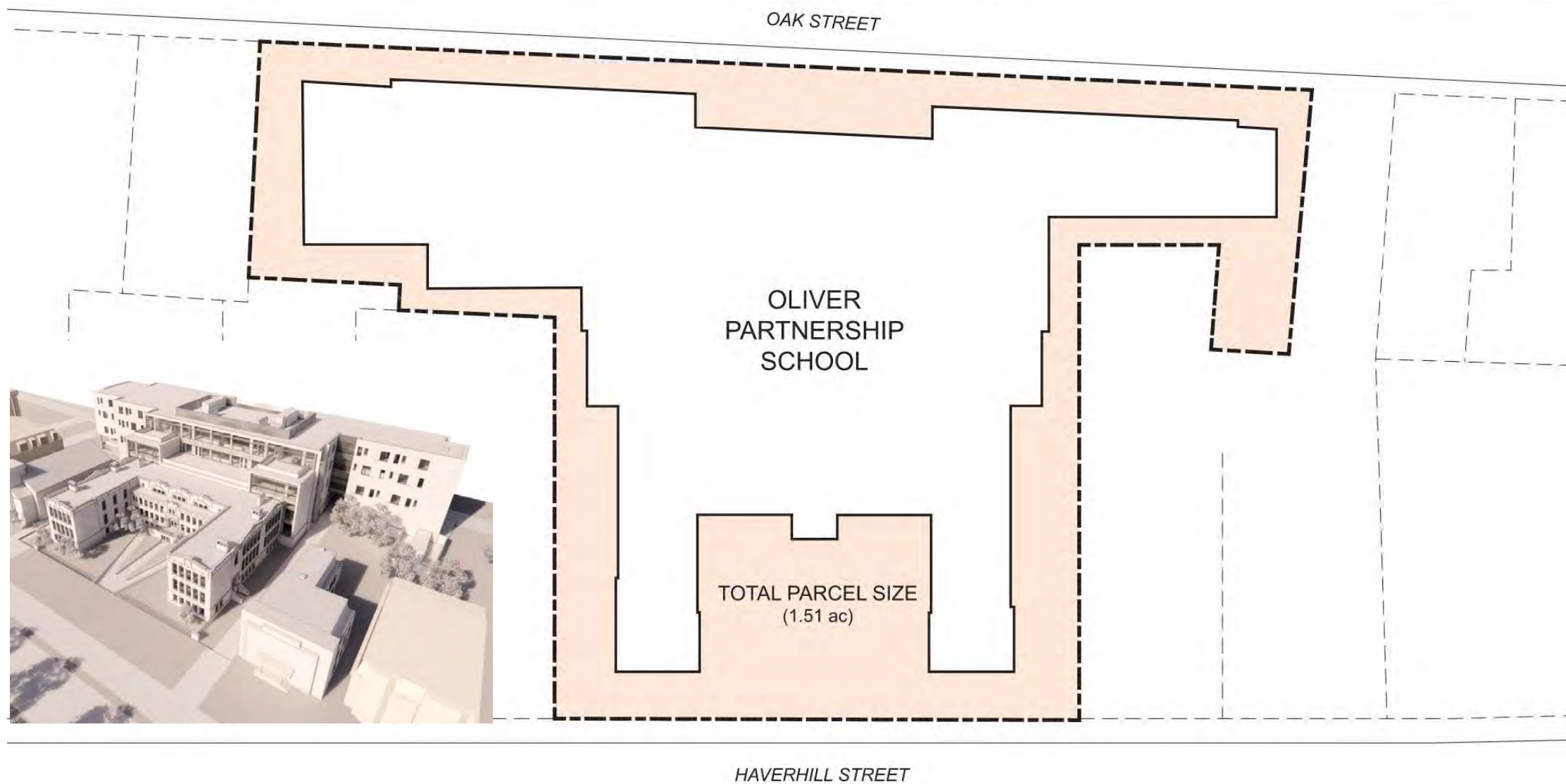
162,000 GSF facility

Maximizes MSBA reimbursement

Establishing the Site *parcels they are today*

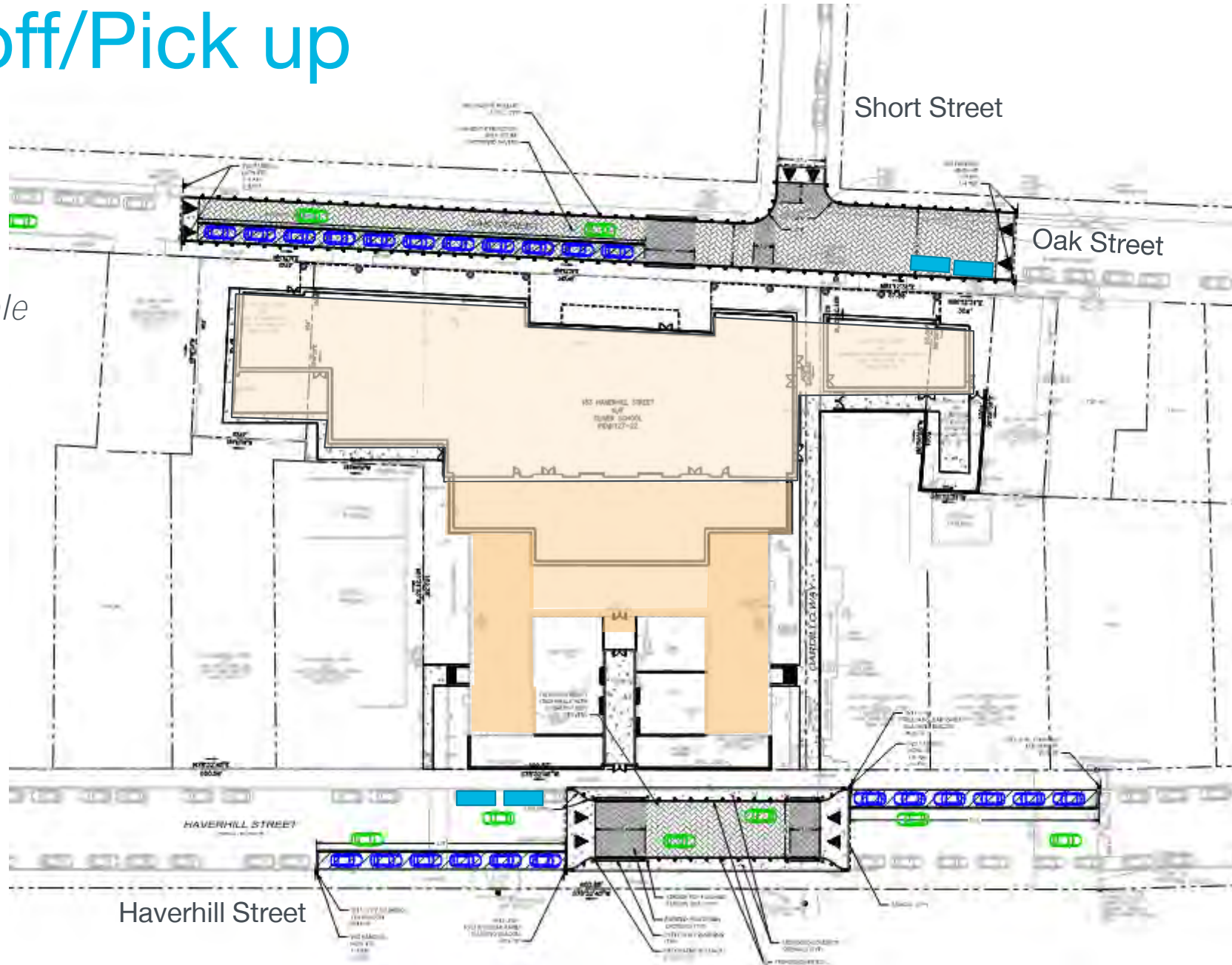


Establishing the Site *parcels joined*

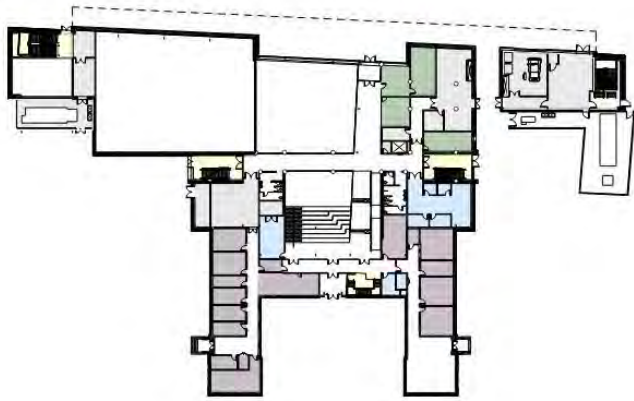


Drop off/Pick up

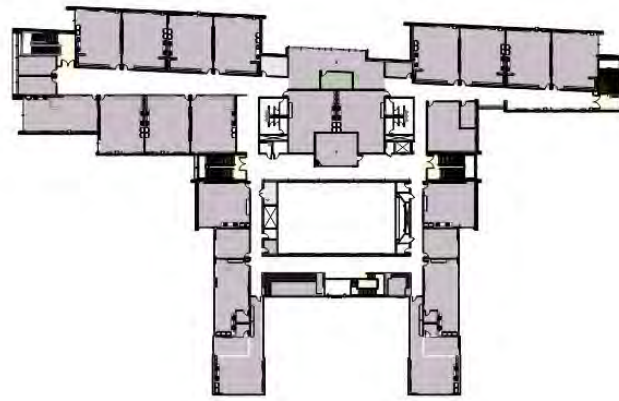
■ Accessible Parking



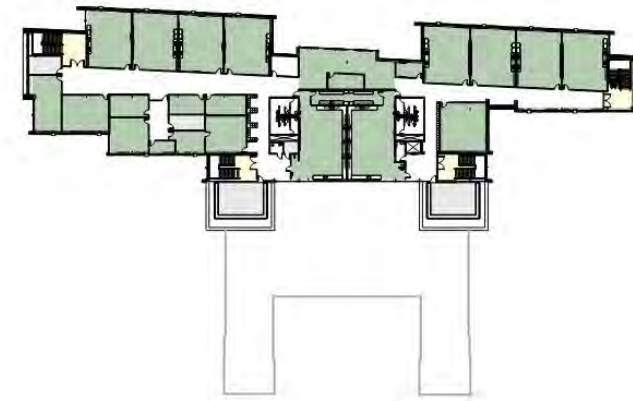
Floor Plans: UAO/OPS organization plans



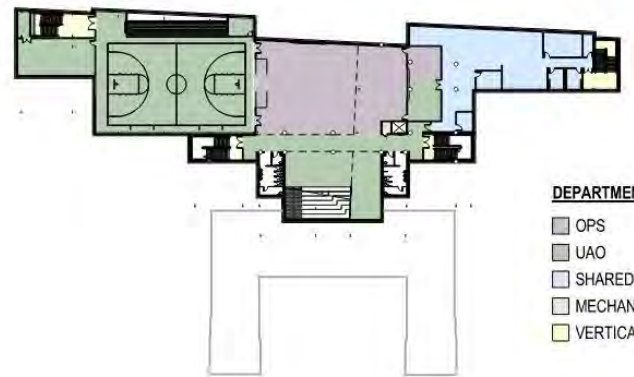
GRADE



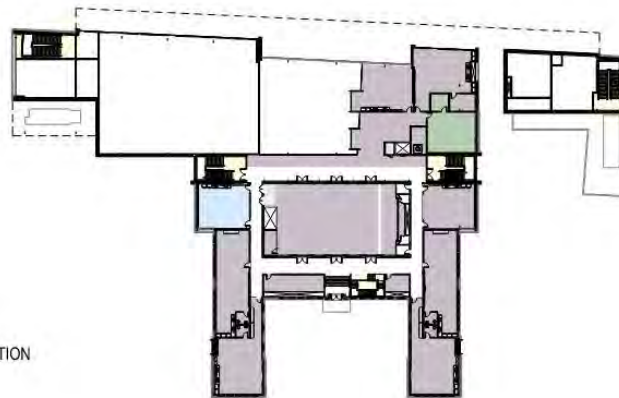
2ND FLOOR



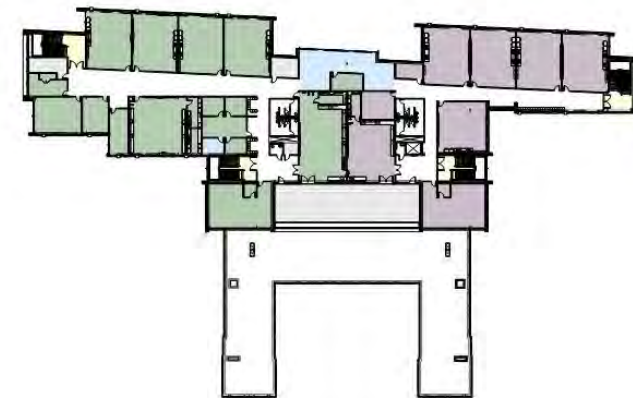
4TH FLOOR



BASEMENT



1ST FLOOR

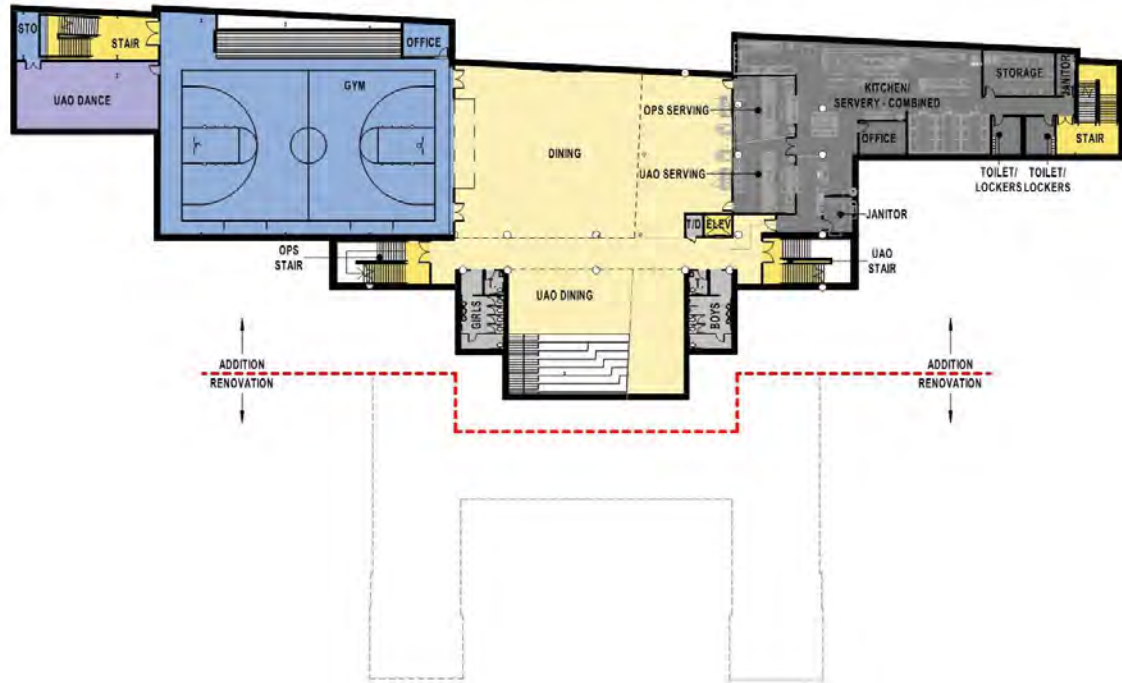


3RD FLOOR

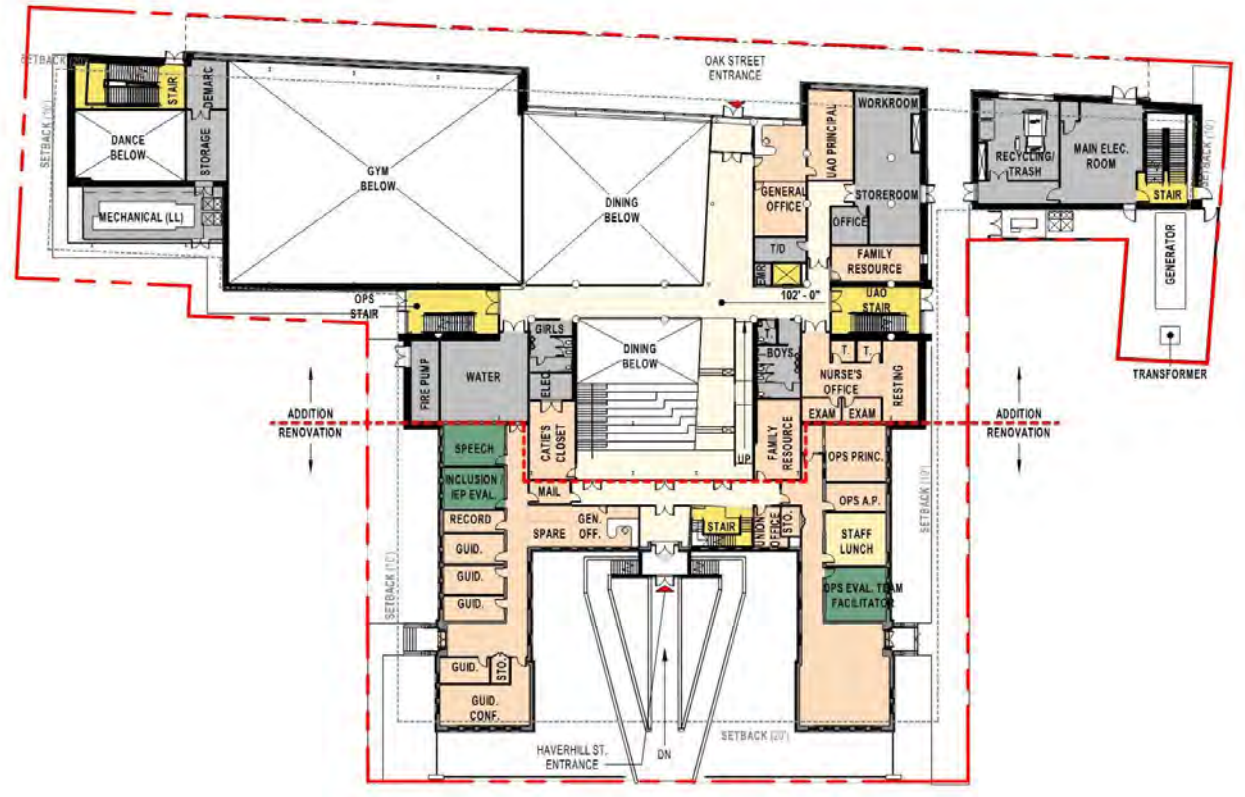
- DEPARTMENT**
- OPS
 - UAO
 - SHARED
 - MECHANICAL
 - VERTICAL CIRCULATION



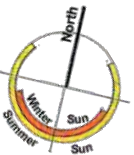
Floor Plans



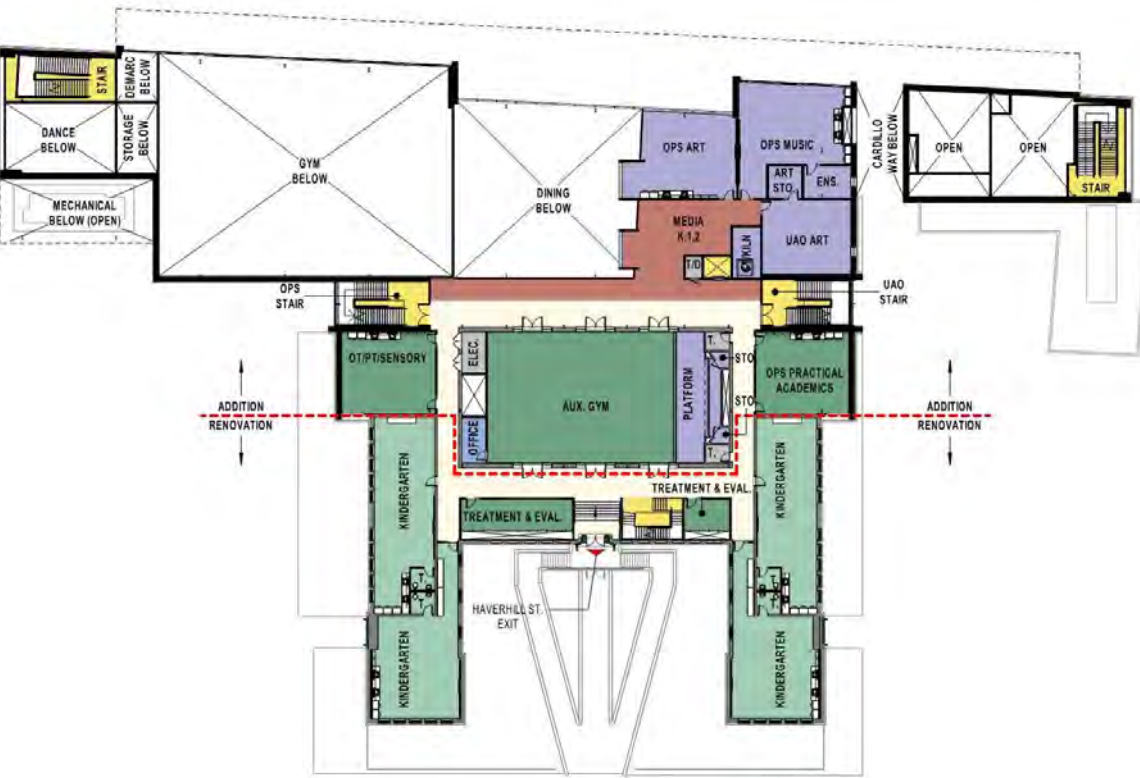
Basement



Lower Level



Floor Plans



First Floor



Second Floor



Floor Plans



Third Floor



Fourth Floor



Section Perspective – North/South



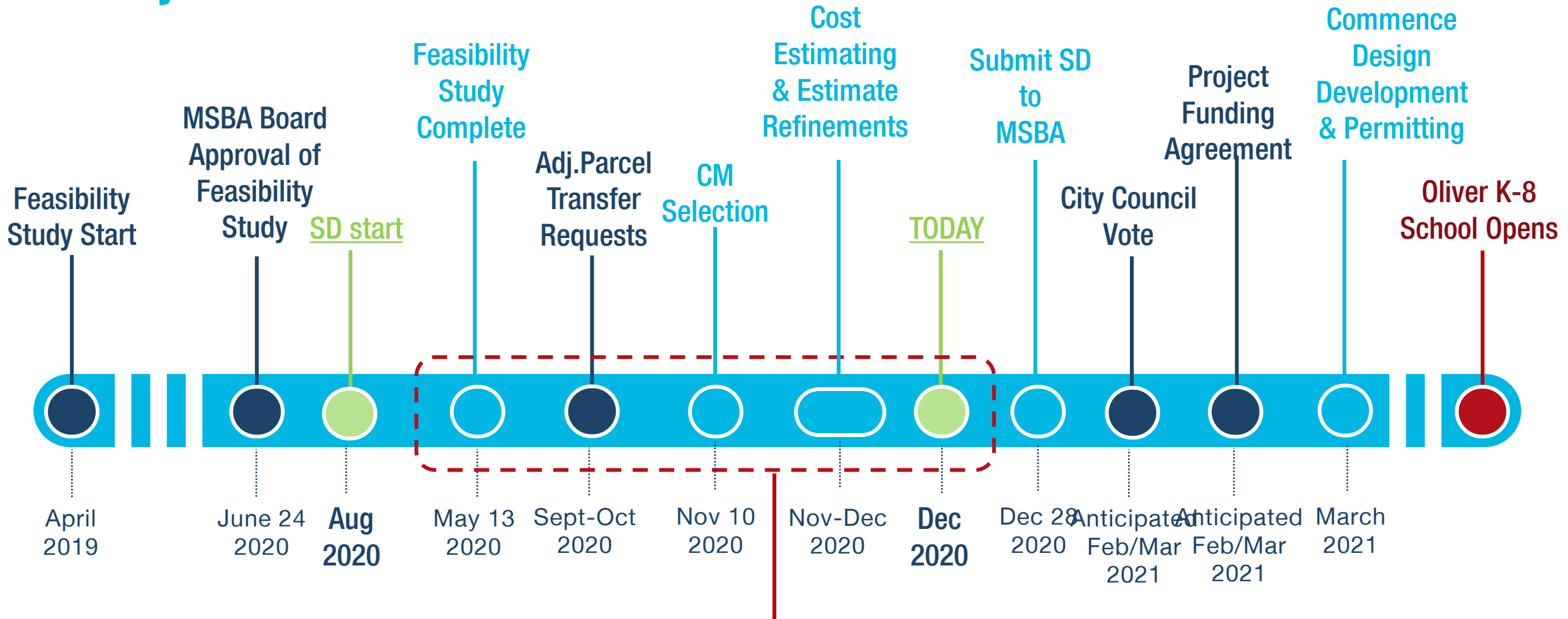
Conceptual Massing





Conceptual Massing

Project Schedule



Design updates and coordination with stakeholders including School Dept, City Engineering, Planning Dept, Historic Commission, PHHDC, and City Council to gain full support in advance of Schematic Design Submission to MSBA.

| SMMA

Thank you

