

Lawrence Oliver Monthly Update – November 2023

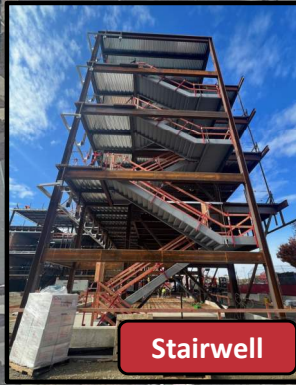
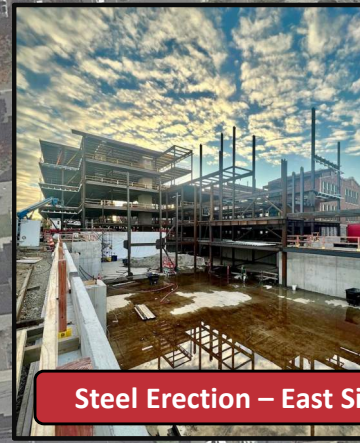
Construction Updates

Upcoming Activities

- Structural steel erection east – Levels 1-6
- Rebar install and concrete slab placements – west
- Existing building window install
- Electrical utility excavation

Community Impacts

- Daily steel and decking deliveries through December
- Periodic concrete trucks for slab placements
- Periodic deliveries for misc. materials



Drone Link:
<https://vimeo.com/877227310/1b66a89607?share=copy>

