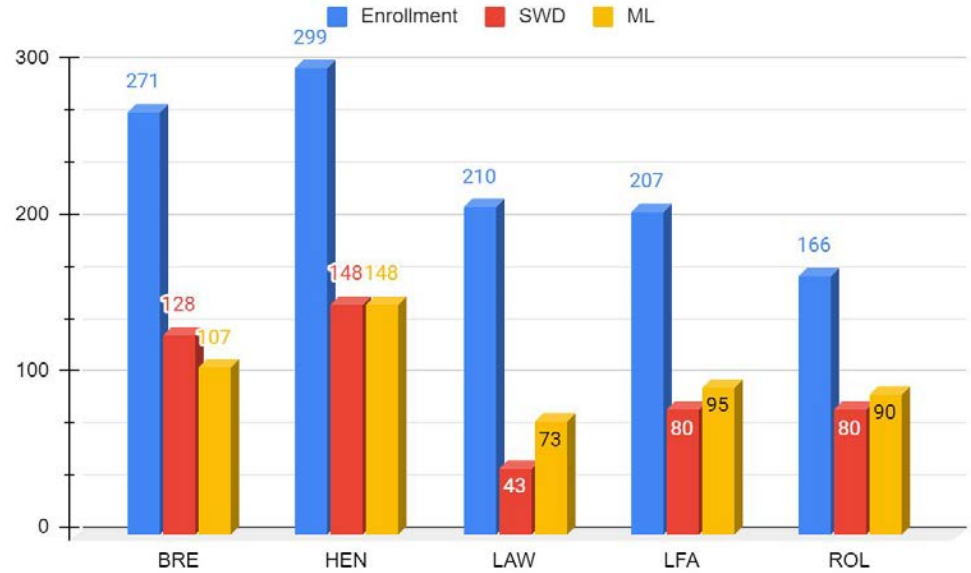
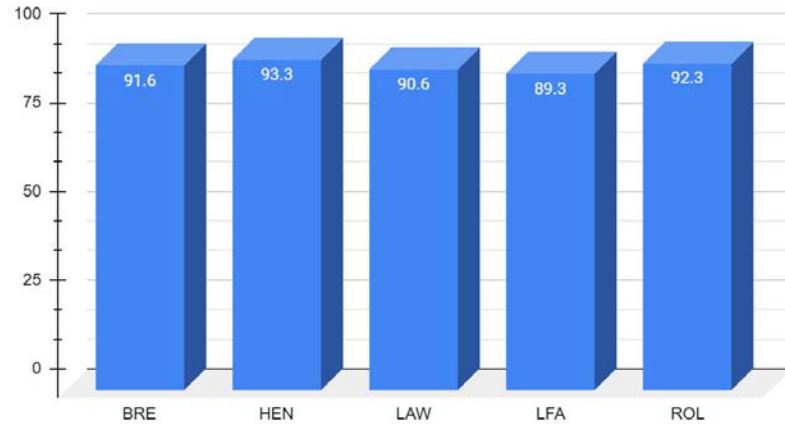


LPS District Updates LAE Board Meeting November 8, 2023



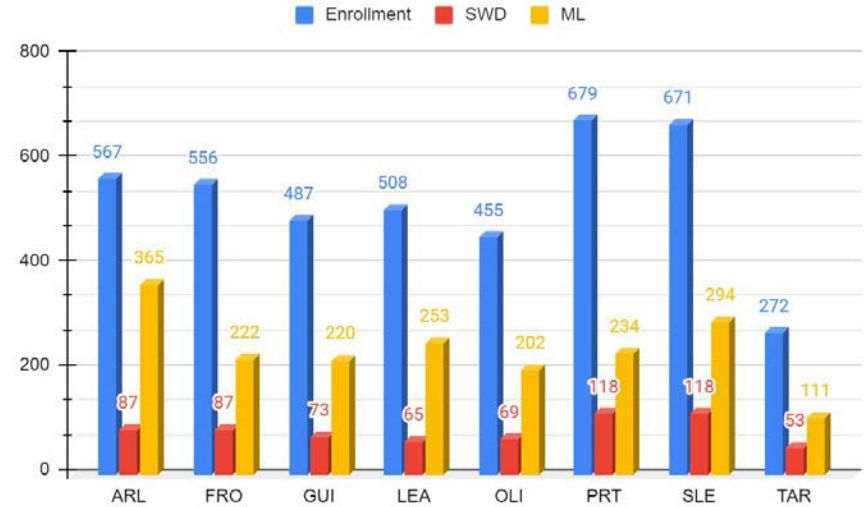
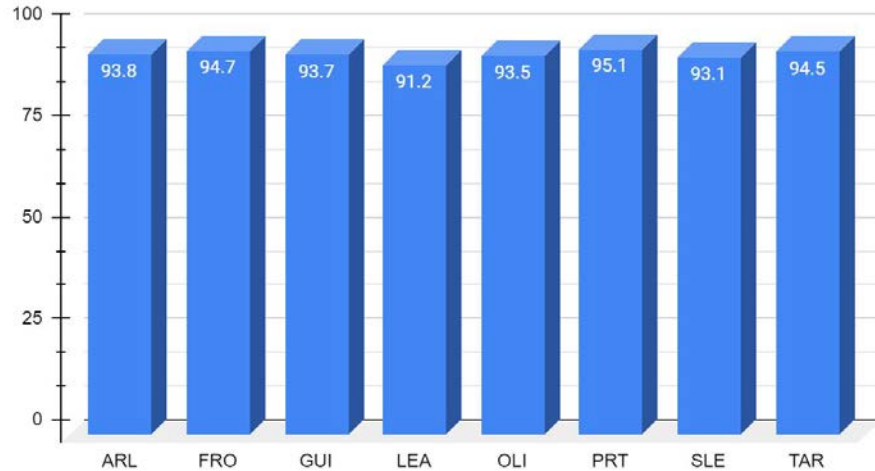
Early Childhood

Attendance Rate



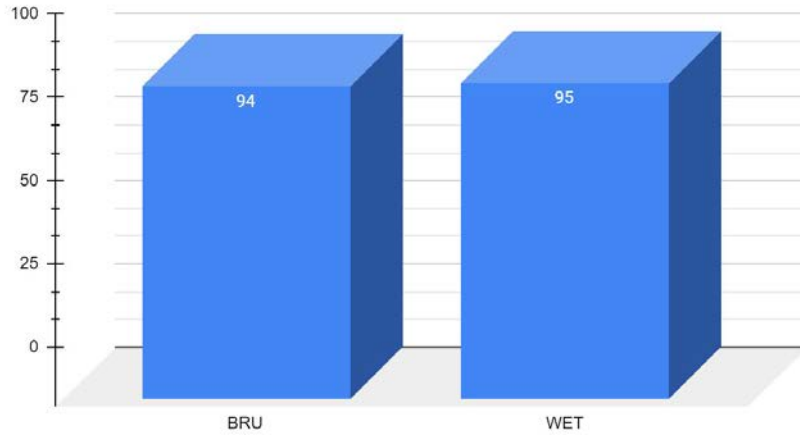
Elementary Schools

Attendance Rate

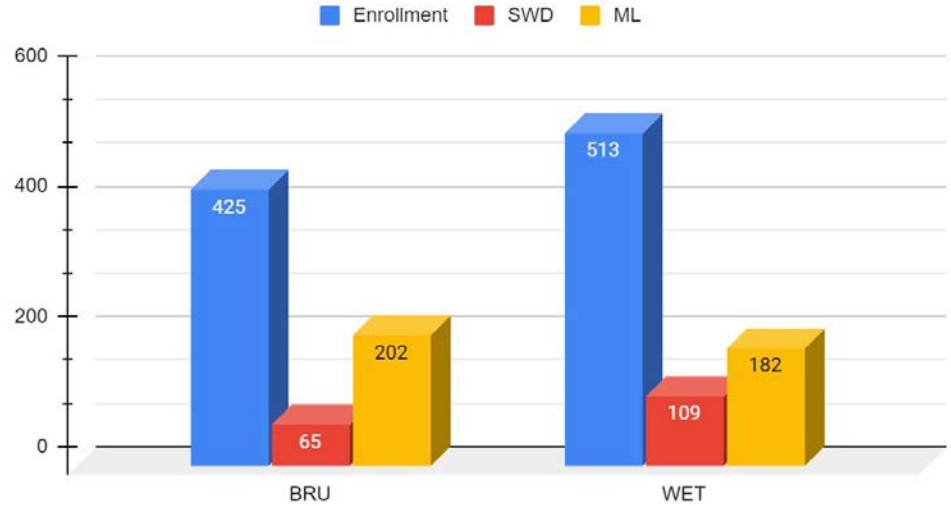


K-8 & 3-8

Attendance Rate

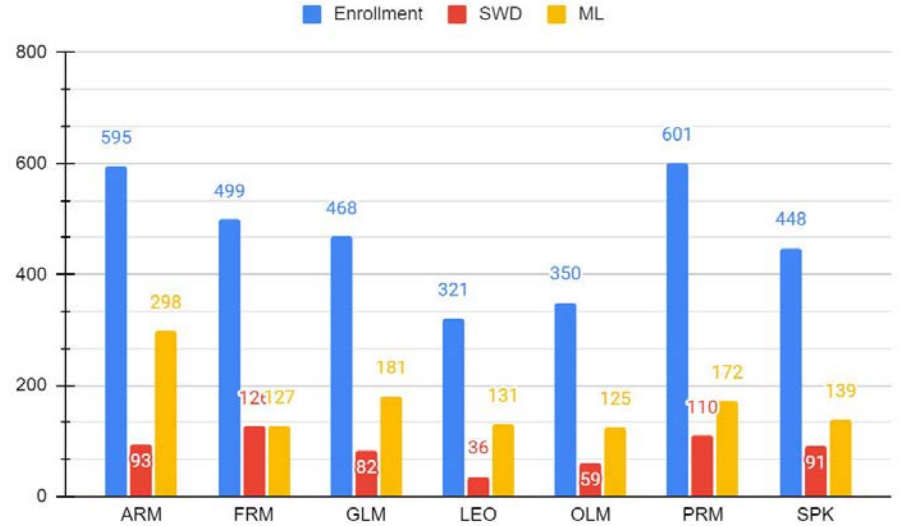
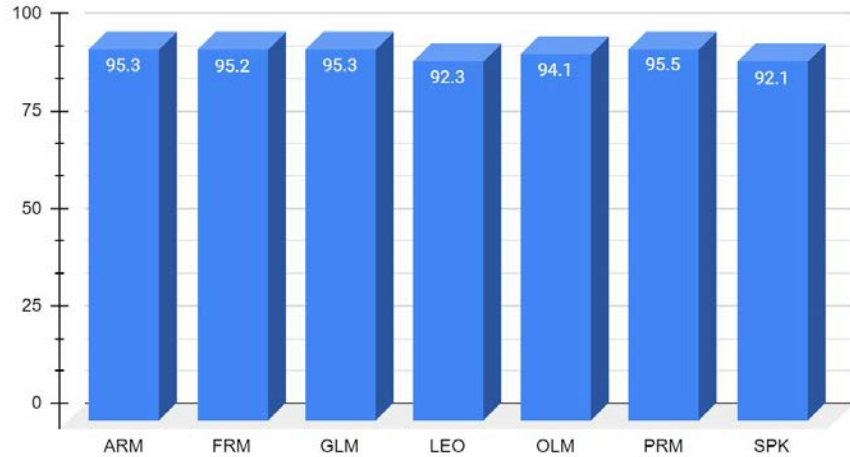


Enrollment



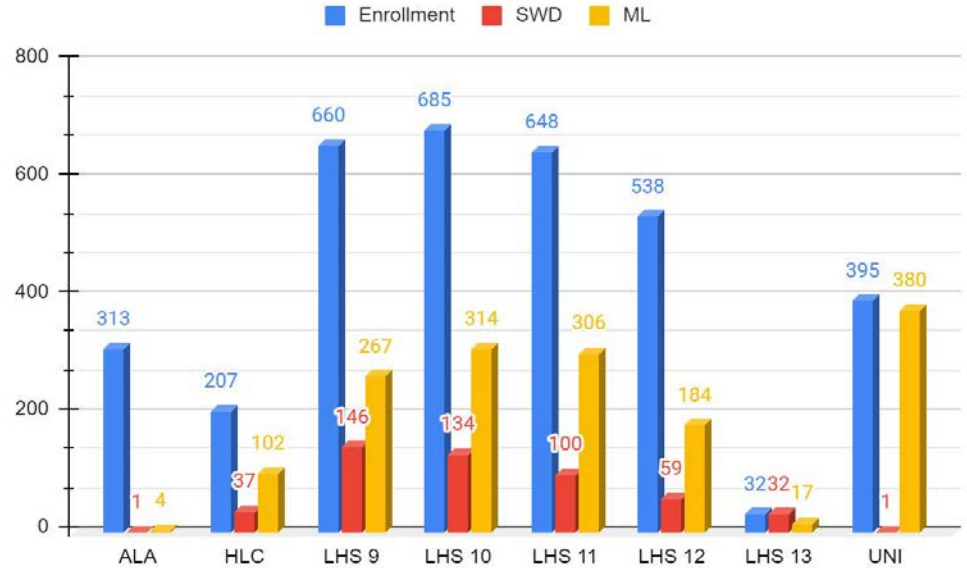
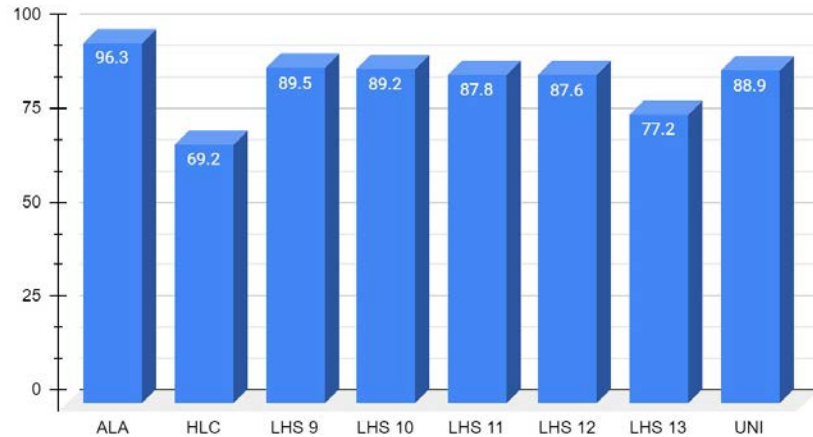
Middle Schools

Attendance Rate



Secondary Schools

Attendance Rate



Jumpstart Read for the Record

- Read for the Record is a yearly event to promote and support literacy and social-emotional development
- This year's title was ***With Lots of Love***
- Author Jenny Sanchez Torres; illustrator Andre Ceolin
- School staff and community members were at our early childhood centers reading the book in English and Spanish



Early College Site Visit #1

- Merrimack College hosted an Early College site visit on October 24th.
- We spoke to students on the bus ride over on what their current experience was at Merrimack College.
- We were able to visit psychology, political science, and chemistry classes.
- We were also able to listen to a panel of current Early College students as well as alumni about what they see as the most important aspects of early college.
- Launched in 2017, and awarded designation in 2018, more than 350 Lawrence students have graduated from the Early College program with Merrimack College, earning over 5,750 college credits. Students travel to the college campuses and are able to select courses in Education, STEM/Pre-Med, Political Science, and Human Development & Human Services. All courses are taught on the college campus with Merrimack professors, and Early College alumni have the opportunity to work as Peer Mentors to provide enhanced academic and mentoring support to current students.
- We will have site visit #2 during the spring to NECC.



Professional Learning

- In school calendar planning, the district took advantage of full-day professional learning opportunities
- Yesterday, we held staff PD during Election Day
- Staff across the district were able to select from a menu of offerings through TeachPoint
- Schools submitted their plans based on 23-24 goals completed during the school planning period
- PD plans address student data, instructional strategies, and social-emotional learning
- Yesterday we observed sessions on Sports & Society, use think/pair/share instructional strategy, use of graphing calculators, and a chili cook-off for team building

Preferred Date	Requesting Department	Length of Session (Hours)	Session Title	PD Provider (Internal or External)	List all Targeted attendees
11/7/23	CMJ	90 Minutes	Hegerty for PK	Majorie Bottari/Hegerty	Preschool teachers, paras, coaches, admin
11/7/23	ML	2 hours (1-3)	ESL Teacher Check-in	ML Department	Benchmark assessments, defining growth v. achievements, compliance updates
11/7/23	OSSS	6 hours	Safety Care Recertification	OSSS Trainers	Staff needing 1-day Recertification (must have completed 2-day initial training already)
11/7/23	OSSS	7 hours	Health Relationships/Peer Support Strategies/Curriculum Modification	Elizabeth Miller, Inclusion Ed Team, Dr. McDavid	Teachers and Paras: Health Relationships, Paras: Intro to ABA; Data collection, Functions of Behavior, etc.; Teachers: Unpacking Standards, Curriculum Modification
11/7/23	OSSS	7	Creating Educationally Relevant SMART Goals, CPLs, and Report Writing for Speech and Language Pathologists	Nichole D'Andrea-Martinez & Demetra Katakis	Speech Language Pathologists
11/7/23	OSSS	2.5 (9-11:30)	Collecting Data & Meeting Norms	Allan Blume	ETF's
11/7/23	OSSS	2.5 (12:30-3:00)	Collecting Data & Meeting Norms	Allan Blume	Open to all SPED teachers
11/7/23	OSSS	2.5 (9-11:30)	Eligibility and Disability: How do we determine?	Elizabeth Bain	Open to all SPED teachers



11/7 Professional Development Continued

POWER READING STRATEGIES

Tools to read **ANY** text (or image, graph, table, media) you encounter!

Before Reading

1. Read question/prompt. Scan and markup title and intro for:
 - a. **Purpose** for reading.
 - b. Background knowledge. What do I already know about the topic?
 - c. Organization

During Reading

2. Circle unfamiliar **vocabulary** (3-4 max). Use context clues and knowledge of conanates, roots, prefixes and suffixes to figure out the meaning of unfamiliar words. Write a replacement word above word.
3. Underline important concepts, people, events, procedures, proofs, formulas, **bold** and **italicized terms**, and other important details. Write the main idea in the margin.
4. Mark **higher order thinking** with a ★ and note
 - a. connections
 - b. inferences
 - c. patterns
 - d. questions
 - e. text analysis

After Reading

Go back to the task to review the purpose for reading. Use annotations to complete the task.

Math TWPS: rigorous task, in cross-curricular groups, with pedagogical analysis

Let a and b represent real numbers and let $f(x)$ be the piecewise function defined below.

$$f(x) = \begin{cases} ax^2 + x - b, & x \leq 2 \\ ax + b, & 2 < x < 5. \\ 2ax - 7 & x \geq 5 \end{cases}$$

- a. Using the definition of continuity, find the values of a and b such that f is continuous on the entire real number line. Be sure to demonstrate proper notation. (Worth 4 points)

PART A: TW(Solve)PS the problem

1. Math Intro (BG) - (15 min)
2. Quietly read this math problem.(3 min)
3. Write and solve the problem, noting your techniques e.g. algebra, graphing, etc. (7 min)
4. Discuss in your group how you solved the problem, and help each other. (20 min)
5. If time allows, share your answer with the larger group. (5 min)

Progress toward attaining English language proficiency - High school							About the Data	
Group	2022 Rate (%)	2023 Rate (%)	Change	Target	N	Points	Reason	
All Students	21.1	11.4	-9.7	22.6	919	0	Declined	
Lowest Performing	-	-	-	-	-	-	-	
High needs	-	-	-	-	-	-	-	
Low income	-	-	-	-	-	-	-	
EL and Former EL	21.1	11.4	-9.7	22.6	919	0	Declined	
Students w/ disabilities	-	-	-	-	-	-	-	
Amer. Ind. or Alaska Nat.	-	-	-	-	-	-	-	
Asian	-	-	-	-	-	-	-	
Afr. Amer./Black	-	-	-	-	-	-	-	
Hispanic/Latino	-	-	-	-	-	-	-	
Multi-race, Non-Hisp./Lat.	-	-	-	-	-	-	-	
Nat. Haw. or Pacif. Isl.	-	-	-	-	-	-	-	
White	-	-	-	-	-	-	-	

LHS Updates

- Student-athletes and coaches attended Leadership On and Beyond the Field, hosted by Essex County DA Paul Tucker as part of Bully Prevention Month
- Homecoming weekend was October 20th and 21st, and included the pep rally, LHS football, and the Homecoming Dance
- Abbott Lawrence Academy open house was October 21st, and was attended by over 300 families
- Lancer Track participated in the 26th Annual Vietnam Memorial Road Race; LHS track took medals for 1st place in female under 20 and 2nd and 4th place in male under 20
- Theater Department is performing West Side Story next week on November 16th, 17th and 18th in the Performing Arts Center at 6 pm
- Unified Games student-athletes have participated in basketball games recently vs Lowell and Andover
- LPS is collaborating with Merrimack Valley Regional Transit on responsible ridership on routes to and from the campus

LAWRENCE HIGH SCHOOL PROUDLY PRESENTS

WEST SIDE STORY

LHS Performing Arts Center
November 16th, 17th and 18th
6:00PM



From the LPS Turnaround Plan

- Pillar II: High quality enrichment, creating opportunities for students to participate in activities outside of the classroom
- Strategy 3: strengthening support and engagement for students beyond academics
- Theme 2: combining the many assets of Lawrence with the best assets of the Commonwealth.
- Many of these offerings are part of a student's daily schedule, and they are supplemented with after school practice/drills; i.e. JROTC, theater, dance
- “For immigrant youth, participation in extracurricular activities may be particularly beneficial in terms of strengthening connections with their school and community” – *Socioeconomic Inequities in Youth Participation 2021*
- Richel, M. 2023, March 24. “The Income Gap Is Becoming a Physical-Activity Divide” The New York Times.



LAWRENCE HIGH SCHOOL CAMPUS CLUBS

School Year 2023-2024

 <p>ASL Club American Sign Language Advisor: Kathleen Brodman Room: A330 Wednesdays @ 9:00</p>	 <p>Art Club Advisor: Yarema Hinkle Room: E206 Regis 128-813 Boarders: 2:30 - 4:30</p>	 <p>Book Club Advisor: Molly Levin Room: Library Wednesdays @ 9:30</p>	 <p>Chess/Trivia Game Club Advisor: Lindsey Pylford Room: C08 Tuesdays @ 9:30</p>
 <p>Dance Club Advisor: Jala O'Donnell Room: B115 Tuesdays & Thursdays @ 1:00</p>	 <p>Drama Club Advisor: Laurie Dorton Room: B101 Tuesdays & Thursdays: 3:15-5:30</p>	 <p>Fitness Club Advisor: Andrew Matos Room: G100 Tuesdays: 3:30 - 4:30</p>	 <p>GSA Gender & Sexuality Alliance Advisor: Kaitlin Cetin Room: G100 Fridays: 2:55 - 3:45</p>
 <p>Mock Trial Club Advisor: Mary DeFazio Room: E304 Wednesdays: 3:00 - 5:00</p>	 <p>National Honor Society Advisor: Richard Gorfain Room: Lecture Hall Wednesdays: 3:00 - 5:00</p>	 <p>Photography Club Advisor: Vanessa Noss Mercedes Room: C301 Mondays: 3:15 - 4:15</p>	 <p>Robotics Club Advisor: Lynn Grande Rogers Room: H201 Wednesdays - 3:15 - 4:15</p>
 <p>STEM & STEAM Advisor: Michelle Chankate Room: H401 Wednesdays: 3:15</p>	 <p>Student Leadership Council Advisor: Tracy Ballenger Room: 1126 2nd & 4th Monday @ 2:00</p>	 <p>Writers' Club Advisor: Eric Gornham Room: F315 Wednesdays: 3:00</p>	

Artist of the Week



Full of Nature Colored Pencil Sugar Skull

Nashly Rodriguez
Arlington Elementary School



Intramurals

- An example of Theme 2
- Thanks to generous funding by the PlayBall Foundation, LPS is currently running fall intramural sports for middle school students.
- Saturday mornings at South Lawrence East
- Currently we have soccer, flag football in action
- Students are the players, staff are the coaches and referees

