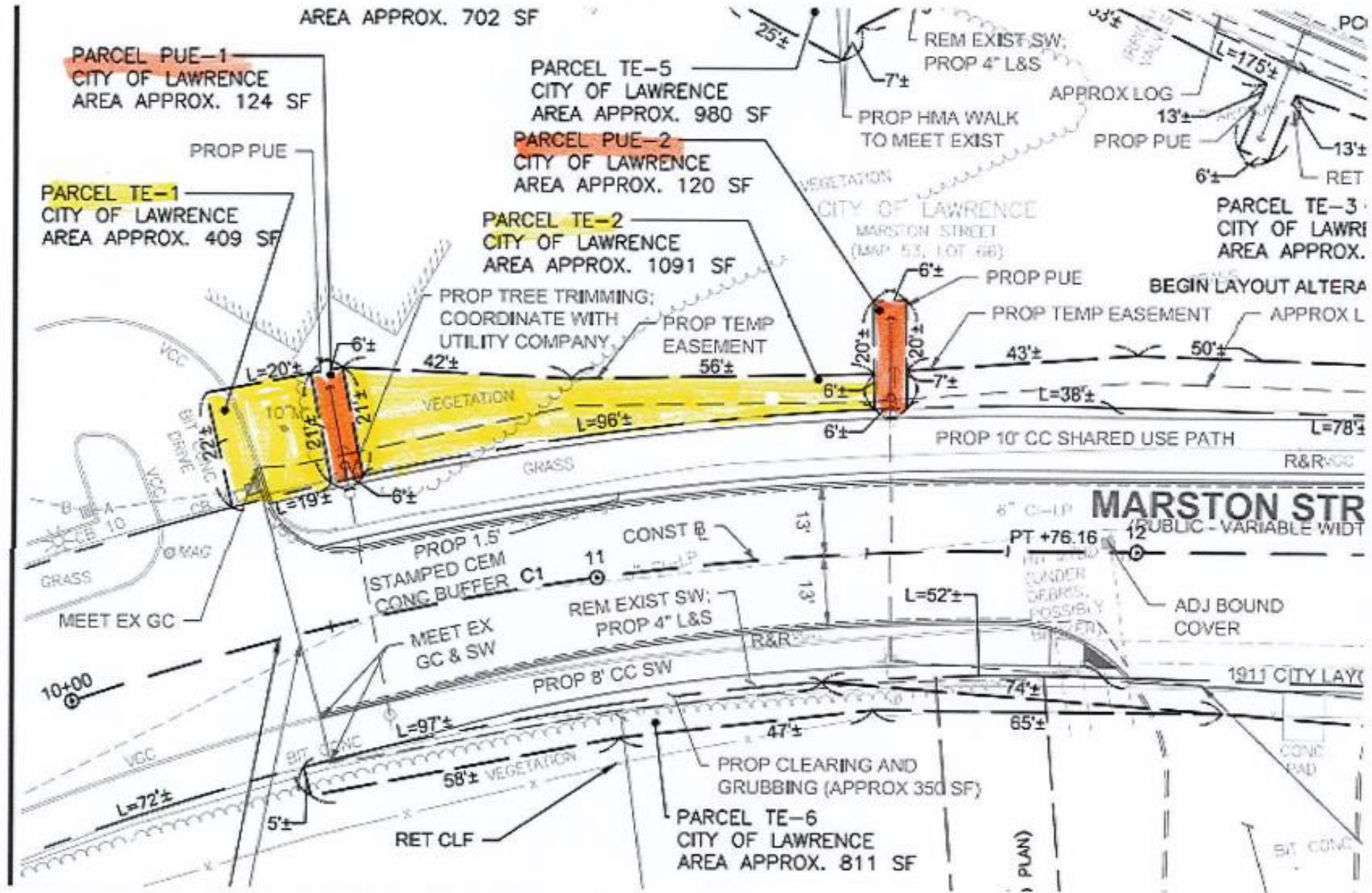
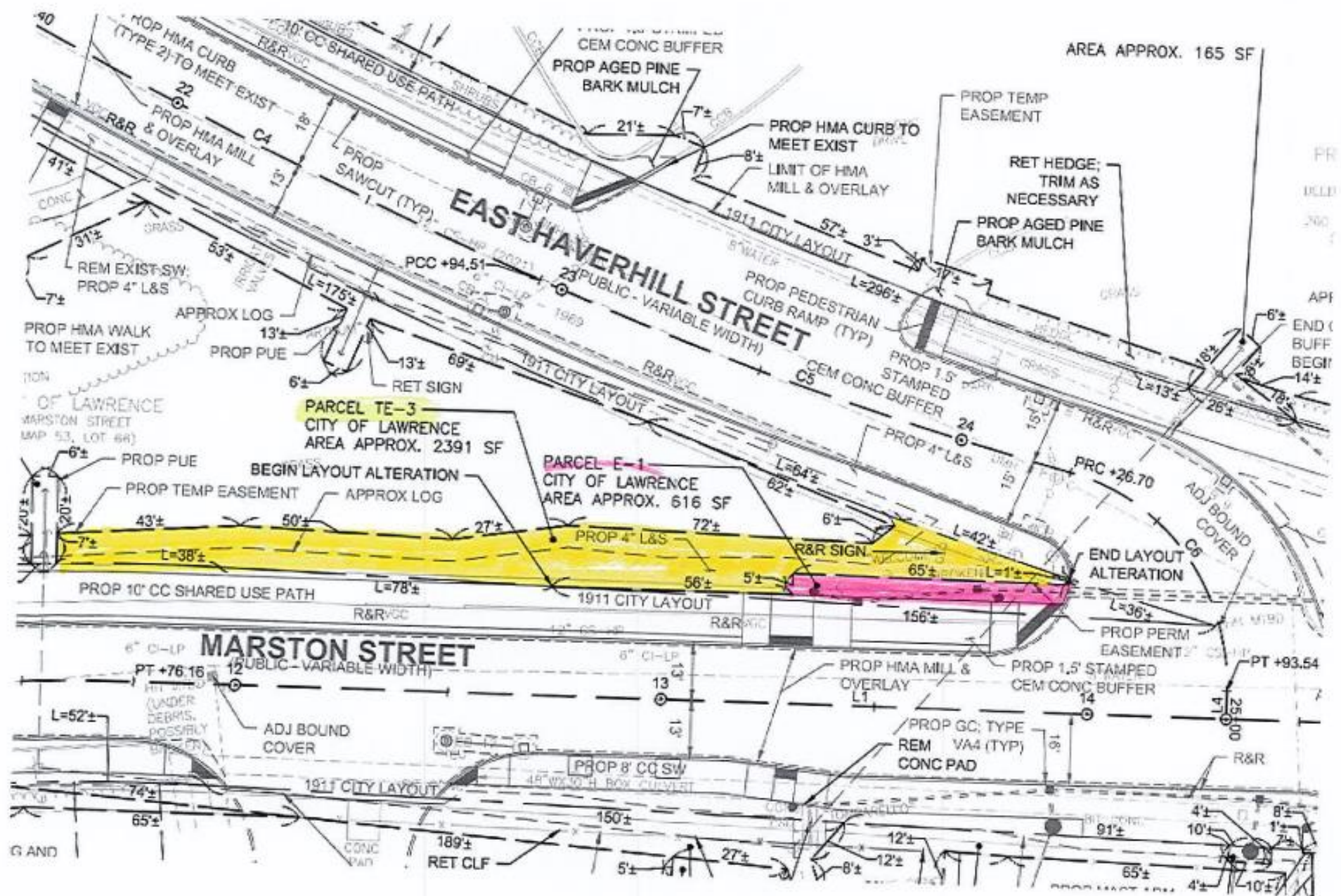


Marston and East Haverhill Street Redevelopment

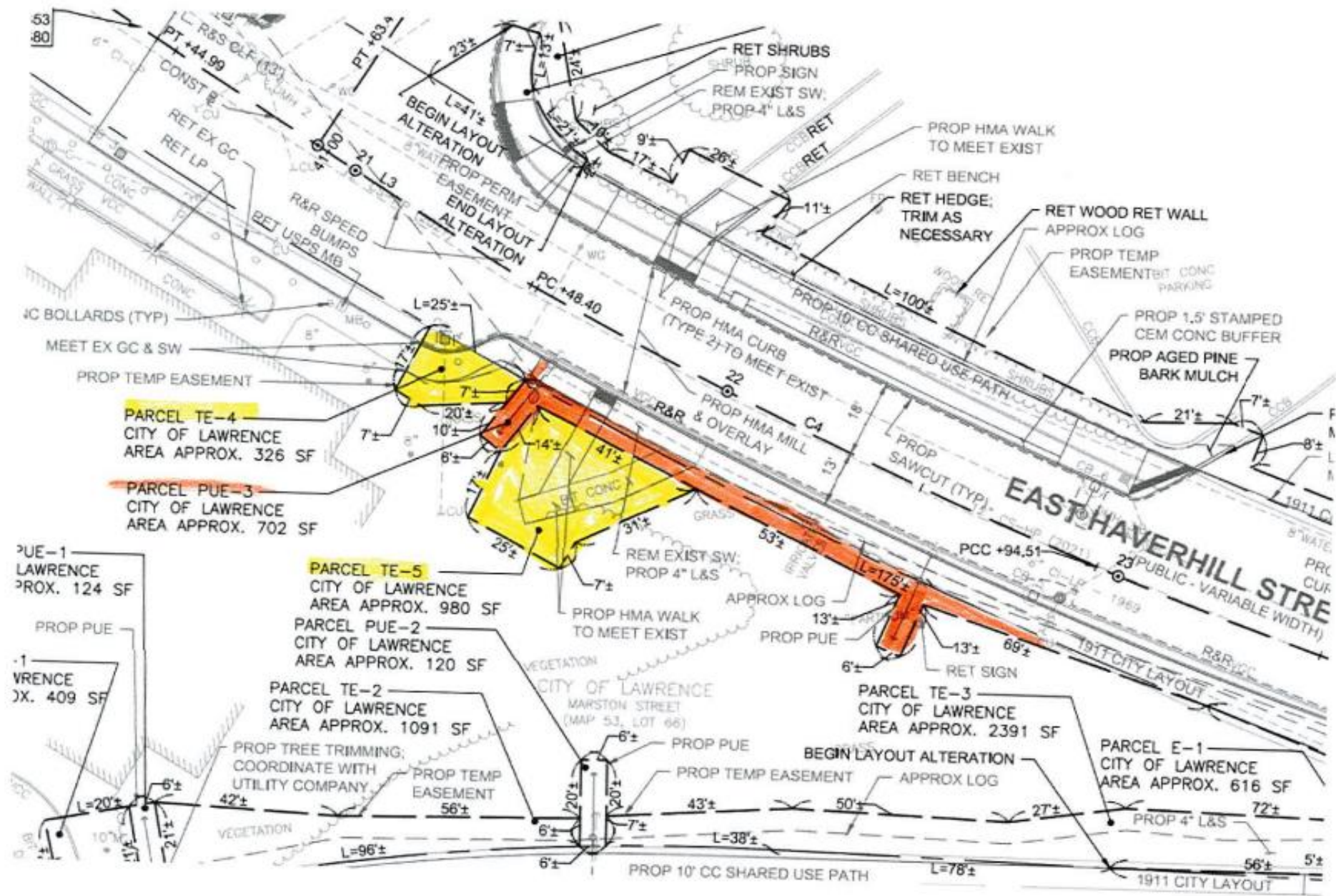
Easements needed in Right of Way



TE-1 (409 sf), TE-2 (1091 sf), PUE-1 (124 sf) and PUE 2 (120 sf)



Parcel TE-3 (2,391 sf) and E-1 (616 sf)



TE-4 (326 sf), TE-5 (980 sf) and PUE-2 (120 sf)

Frost School Map- Area along side Mount Auburn Street

03/06/2023



Data Source: Produced by Merrimack Valley Planning Commission (MVPC) using data provided by the City of Lawrence & Merrimack. MVPC AND THE CITY OF LAWRENCE MAKES NO WARRANTIES, EXPRESSED OR IMPLIED, CONCERNING THE ACCURACY, COMPLETENESS, RELIABILITY, OR SUITABILITY OF THESE DATA. THE CITY OF LAWRENCE AND MVPC DOES NOT ASSUME ANY LIABILITY ASSOCIATED WITH THE USE OR MISUSE OF THIS INFORMATION.



Parcel Dimensions	Street Name	Parcel	Water	Wetlands	Map Key
--- (dashed line)	--- (solid line)	--- (dotted line)	--- (blue wavy line)	--- (green wavy line)	--- (black line)

Projection: NAD_1983_StatePlane_Massachusetts_Mainland_EPSG_2601