

MASSACHUSETTS DEPARTMENT OF TRANSPORTATION HIGHWAY DIVISION

LAWRENCE
MARSTON STREET & EAST HAVERHILL STREET

STATE	FED. AID PROJ. NO.	SHEET NO.	TOTAL SHEETS
MA	-	1	7
PROJECT FILE NO.		610923	

PRELIMINARY RIGHT OF WAY
TITLE SHEET & INDEX

PLAN AND PROFILE OF MARTSON STREET & EAST HARVERHILL STREET

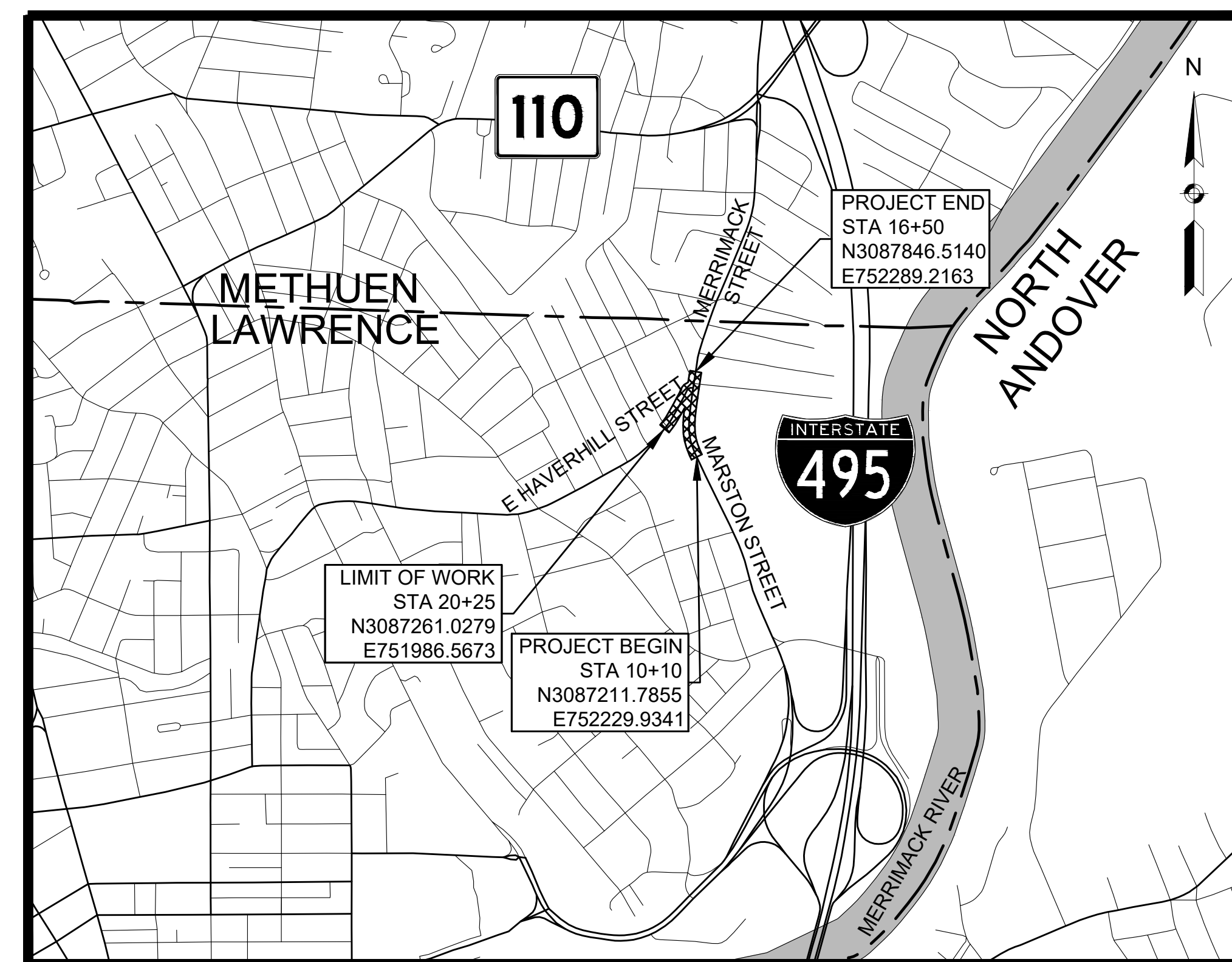
IN THE CITY OF
LAWRENCE
ESSEX COUNTY

PRELIMINARY RIGHT OF WAY PLANS

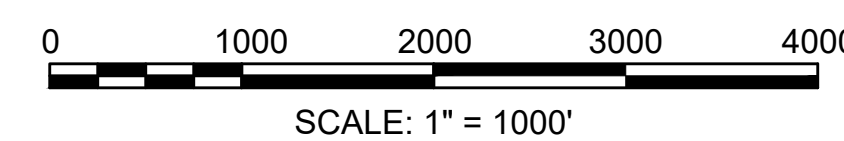
FEDERAL AID PROJECT NO.

THESE PLANS ARE SUPPLEMENTED BY THE OCTOBER 2017 CONSTRUCTION STANDARD DETAILS, THE 2015 OVERHEAD SIGNAL STRUCTURE AND FOUNDATION STANDARD DRAWINGS, MASSDOT TRAFFIC MANAGEMENT PLANS AND DETAIL DRAWINGS, THE 1990 STANDARD DRAWINGS FOR SIGNS AND SUPPORTS, THE 1968 STANDARD DRAWINGS FOR TRAFFIC SIGNALS AND HIGHWAY LIGHTING, AND THE LATEST EDITION OF THE AMERICAN STANDARD FOR NURSERY STOCK.

INDEX	
SHEET NO.	DESCRIPTION
1	TITLE SHEET & INDEX
2	LEGEND, ABBREVIATIONS AND PROJECT DESCRIPTION
3	TYPICAL SECTIONS
4	CRITICAL PROFILES
5	PARCEL SUMMARY SHEET
6	LOCATION PLAN
7	PROPERTY PLAN



LOCUS MAP



MARSTON STREET = 640.00 FEET = 0.121 MILES
EAST HAVERHILL STREET = 475.00 FEET = 0.090 MILES
TOTAL LENGTH OF PROJECT = 1,115.00 FEET = 0.211 MILES

BASE MAP NOTES

1. THE SURVEY BASE PLAN WAS PREPARED BY HANCOCK SURVEY ASSOCIATES, INC. IN OCTOBER, 2020 AND SUPPLEMENTED BY HANCOCK SURVEY ASSOCIATES, INC. IN FEBRUARY, 2021.
2. THE MOST RECENT SITE VISIT WAS COMPLETED IN JANUARY, 2022 TO VERIFY THAT THE EXISTING CONDITIONS SHOWN ON THE PLAN ARE THE CURRENT CONDITIONS IN THE FIELD.
3. THE LAYOUT AND PROPERTY LINES SUBMITTED ON THE PLAN WERE COMPILED FROM HANCOCK SURVEY ASSOCIATES, INC. CERTIFIED BY JASON ELLIS, A PLS IN DIRECT CHARGE AND SUPERVISION OF THE SURVEY BASEMAP.
4. THE OWNERS HAVE BEEN CHECKED AND UPDATED AS OF JANUARY, 2022.

DATE	DESCRIPTION	REV #
2/08/2022	REVISED - 3 PS&E SUBMITTAL ALTERED PARCELS: TE-10	6
1/27/2022	REVISED - 2 PS&E SUBMITTAL ALTERED PARCELS: TE-7	5
1/19/2022	REVISED PS&E SUBMITTAL	4
1/14/2022	PS&E SUBMITTAL NEW PARCELS: E-6 ALTERED PARCELS: E-4, TE-4, TE-9, TE-14	3
12/14/2021	REVISED 75%/100% SUBMITTAL ALTERED PARCELS: TE-3, TE-10	2
10/29/2021	75%/100% SUBMITTAL NEW PARCELS: E-4, E-5, PUE-6, TE-13, TE-14 ALTERED PARCELS: E-1, E-2, E-3, PUE-3, TE-1, TE-2, TE-3, TE-5, TE-6, TE-8, TE-9, TE-10 DELETED PARCELS: E-PUE-1, PUE-4, TE-11	1
03/01/2021	25% SUBMITTAL	0

146 Dascomb Road
Andover, MA 01810
978-794-1792

311 Main Street
2nd Floor
Worcester, MA 01608
508-868-5104

169 Ocean Blvd, Unit 3
PO Box 249
Hampton, NH 03842
603-601-8154

www.TheEngineeringCorp.com

APPROVED

CHIEF ENGINEER

DATE

GENERAL SYMBOLS

Table with columns: EXISTING, PROPOSED, DESCRIPTION. Lists symbols for various infrastructure elements like JB (Jersey Barrier), CB (Catch Basin), FP (Flag Pole), MB (Mail Box), wells, manholes, utility poles, fences, and boundaries.

TRAFFIC SYMBOLS

Table with columns: EXISTING, PROPOSED, DESCRIPTION. Lists symbols for traffic control elements like Controller Cabinet, Mast Arm, Signal Heads, Pedestrian Signal Head, Yagi Antenna, and Traffic Signal Conduit.

PAVEMENT MARKINGS SYMBOLS

Table with columns: EXISTING, PROPOSED, DESCRIPTION. Lists pavement marking symbols such as Pavement Arrow, Legend 'ONLY', Bike Lane Legend, Stop Line, Crosswalk, Solid White Line, Solid Yellow Line, Broken White Line, Broken Yellow Line, Dotted White Line, Dotted Yellow Line, Dotted White Line Extension, Dotted Yellow Line Extension, Double White Line, and Double Yellow Line.

PROJECT DESCRIPTION:

THIS PROJECT CONSISTS OF SAFETY AND TRAFFIC OPERATION IMPROVEMENTS ALONG APPROXIMATELY 640' OF MARSTON STREET AND APPROXIMATELY 475' OF EAST HAVERHILL STREET.

THE PROPOSED IMPROVEMENTS INCLUDE CONSTRUCTION OF A FULLY ACTUATED TRAFFIC SIGNAL AND GEOMETRIC MODIFICATIONS TO REDUCE CONFLICT AREAS, MINIMIZE PEDESTRIAN CROSSING DISTANCES AND INCREASE VEHICULAR, PEDESTRIAN AND BICYCLE SAFETY AT THE CITY'S GATEWAY INTERSECTION.

THE PROPOSED IMPROVEMENTS INCLUDE THE CONSTRUCTION OF ENHANCED BICYCLE AND PEDESTRIAN ACCOMMODATIONS (E.G. CONTINUOUS 8' CEMENT CONCRETE SIDEWALKS AND ADA COMPLIANT PEDESTRIAN CURB RAMP, 10' CEMENT CONCRETE SHARED USE PATH) THROUGHOUT THE PROJECT AREA.

THE WORK INCLUDES EARTH EXCAVATION, PAVEMENT MILLING, SUPERPAVE ASPHALT PAVEMENT, CEMENT CONCRETE SIDEWALK, ADA COMPLIANT PEDESTRIAN CURB RAMP, GRANITE CURB, MUTCD-COMPLIANT SIGNS AND PAVEMENT MARKINGS, AND MINOR DRAINAGE IMPROVEMENTS.

ABBREVIATIONS

Table with columns: GENERAL, DESCRIPTION. Lists abbreviations for traffic and project terms such as AADT (Annual Average Daily Traffic), ABAN (Abandon), ADJ (Adjust), ACCM PIPE (Asphalt Coated Corrugated Metal Pipe), etc.

LAWRENCE MARSTON STREET & EAST HAVERHILL STREET

Small table with columns: STATE, FED. AID PROJ. NO., SHEET NO., TOTAL SHEETS. Values: MA, -, 2, 7.

LEGEND, ABBREVIATIONS & PROJECT DESCRIPTION

ABBREVIATIONS (cont.)

Table with columns: GENERAL, DESCRIPTION. Continuation of abbreviations including PVC (Point of Vertical Curvature), PVI (Point of Vertical Intersection), PVT (Point of Vertical Tangency), etc.

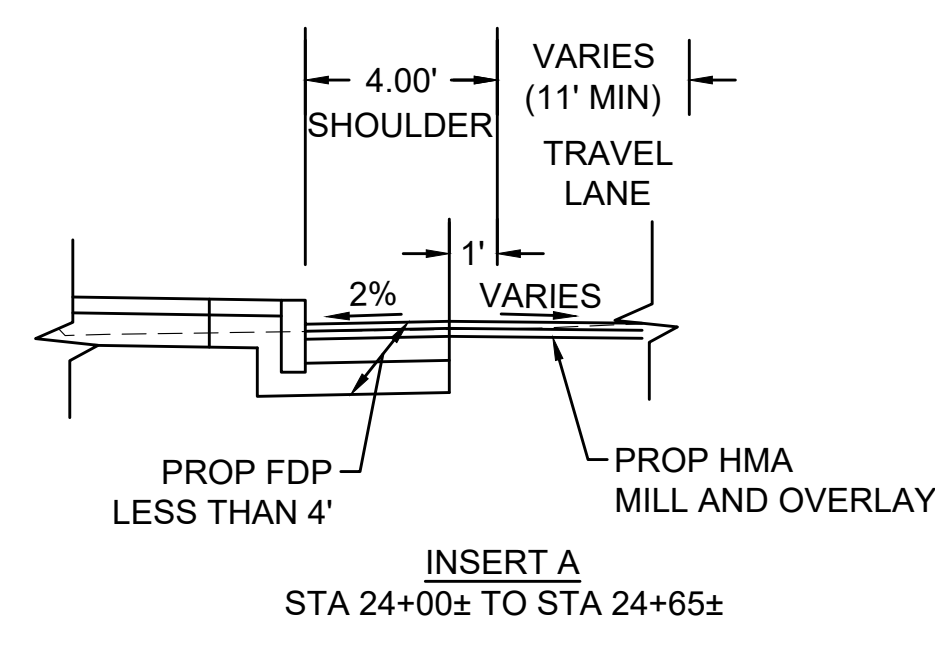
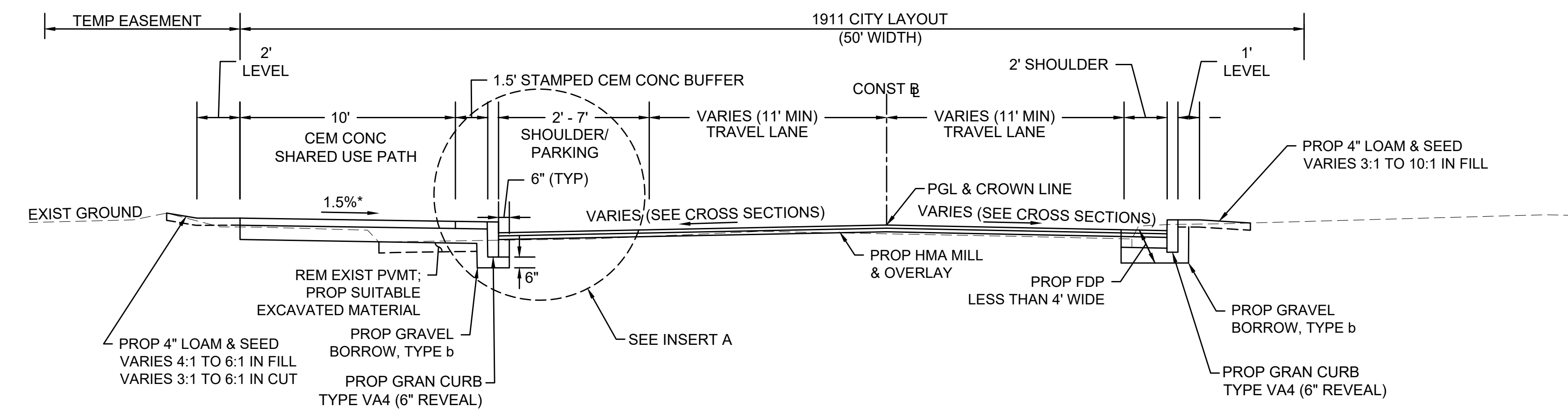
TRAFFIC SIGNAL ABBREVIATIONS

Table with columns: ABBREVIATION, DESCRIPTION. Lists traffic signal abbreviations such as CAB (Cabinet), CCVE (Closed Circuit Video Equipment), DW (Steady Upraised Hand), etc.

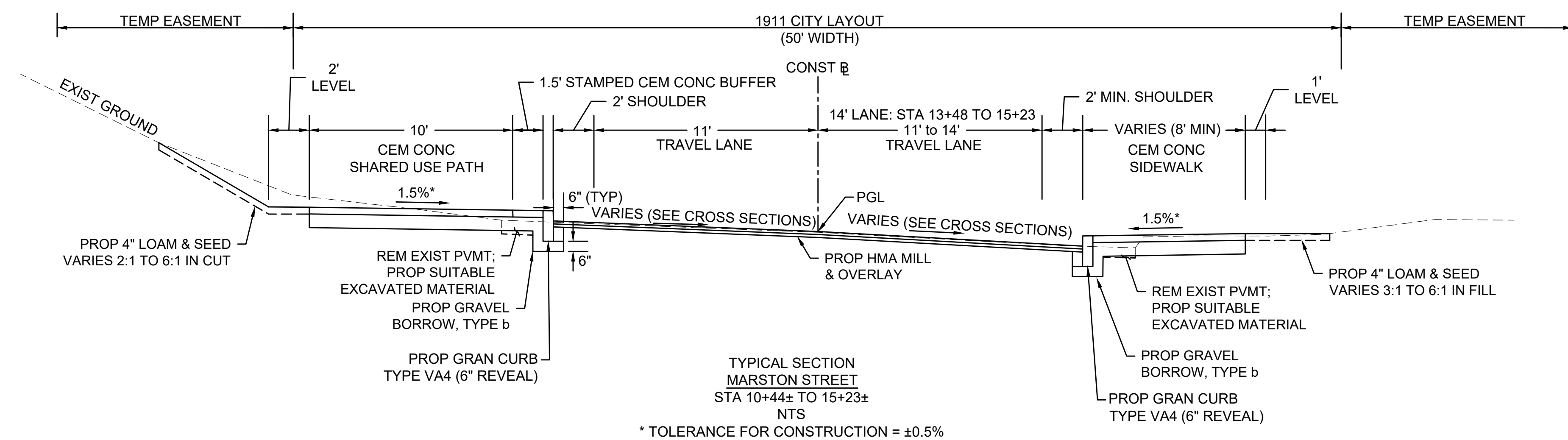
**LAWRENCE
MARSTON STREET & EAST HAVERHILL STREET**

STATE	FED. AID PROJ. NO.	SHEET NO.	TOTAL SHEETS
MA	-	3	7
PROJECT FILE NO.		610923	

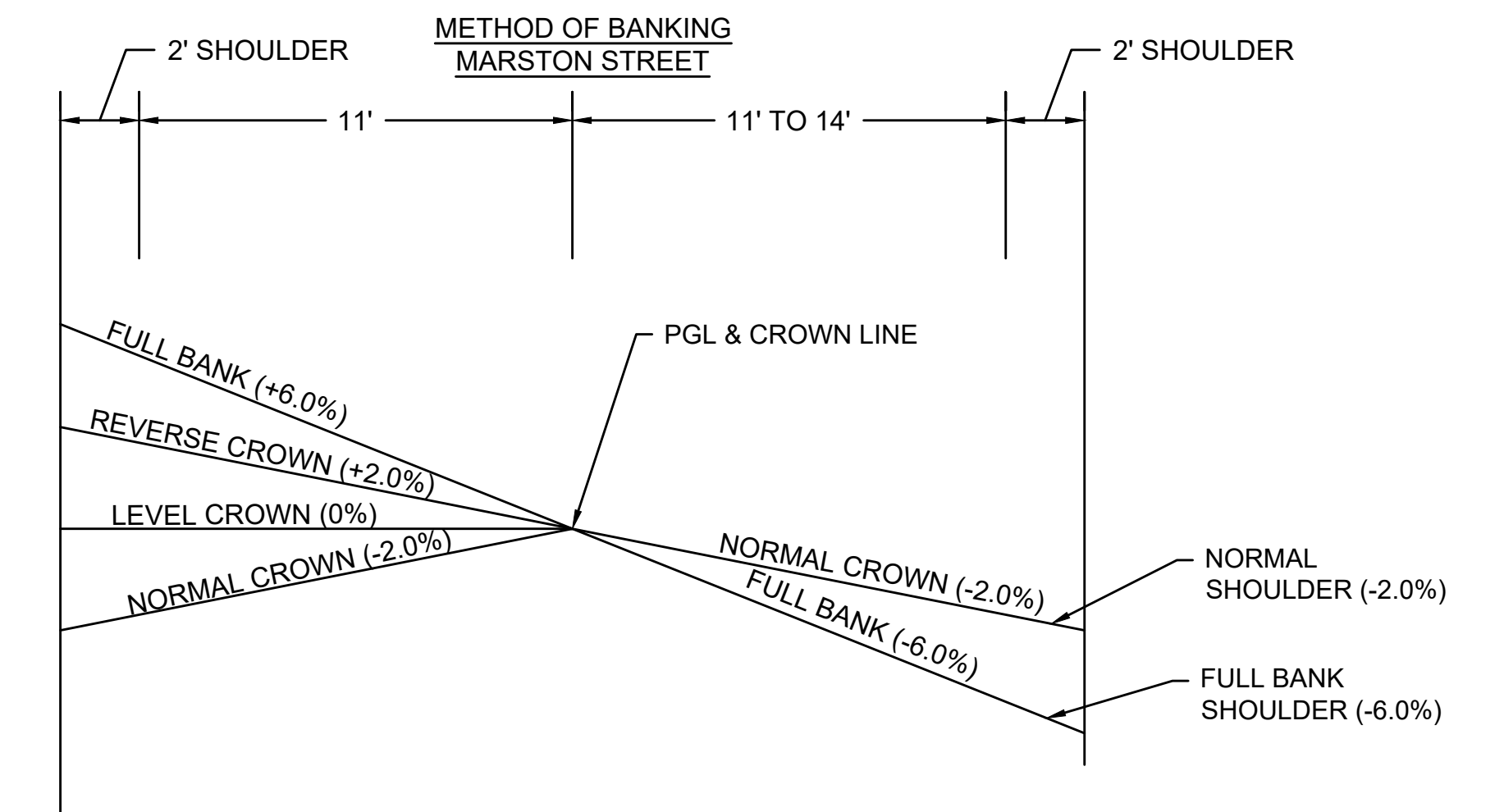
**PRELIMINARY RIGHT OF WAY
TYPICAL SECTIONS**



**TYPICAL SECTION
EAST HAVERHILL STREET
STA 21+72± TO 24+42±
NTS
* TOLERANCE FOR CONSTRUCTION = ±0.5%**



**TYPICAL SECTION
MARSTON STREET
STA 10+44± TO 15+23±
NTS
* TOLERANCE FOR CONSTRUCTION = ±0.5%**

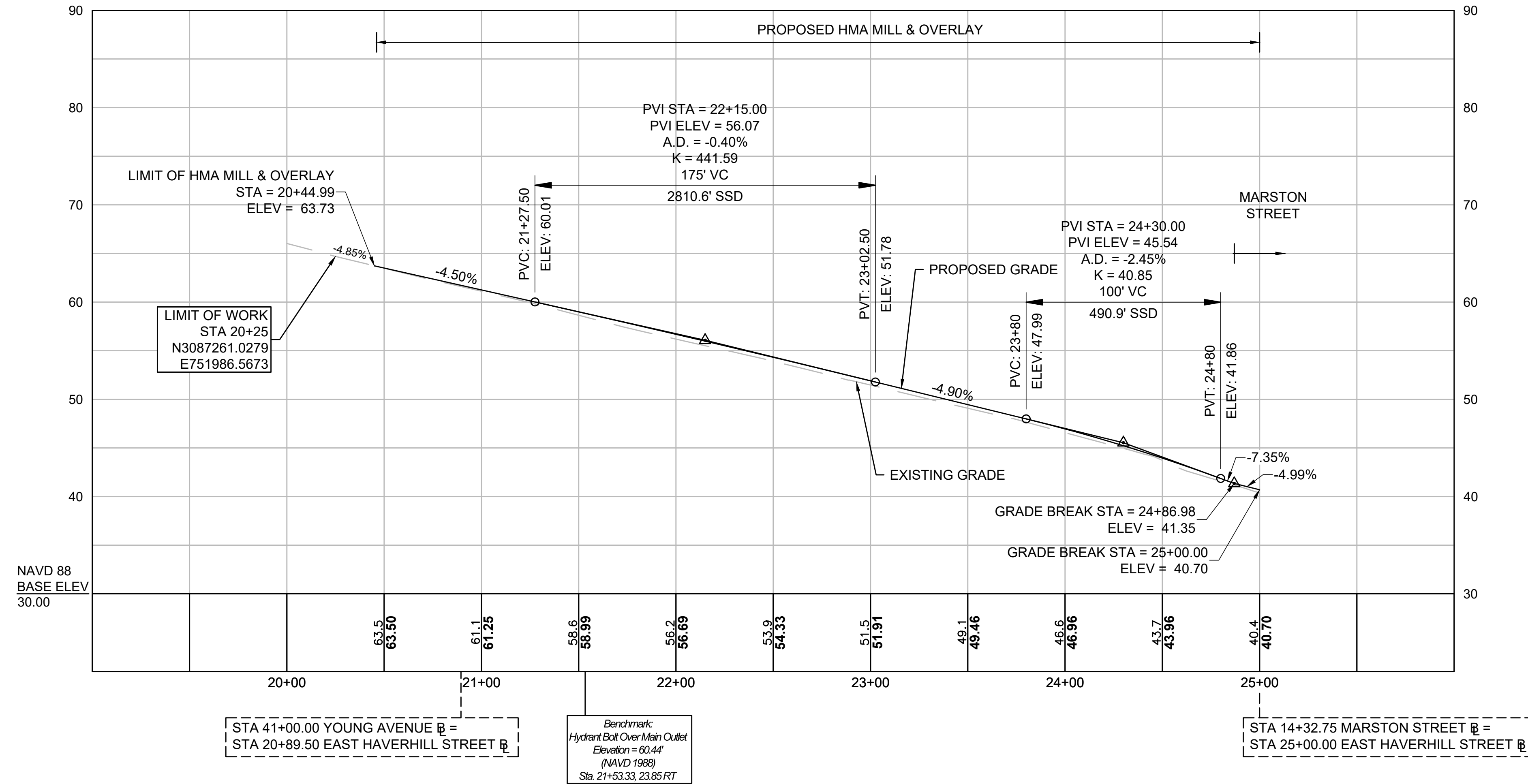


EAST HAVERHILL STREET

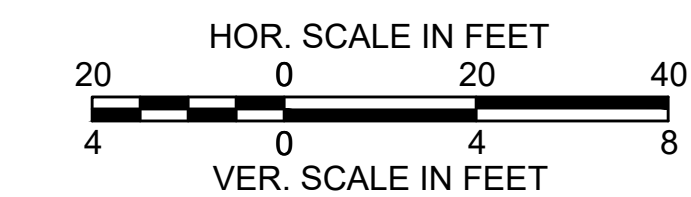
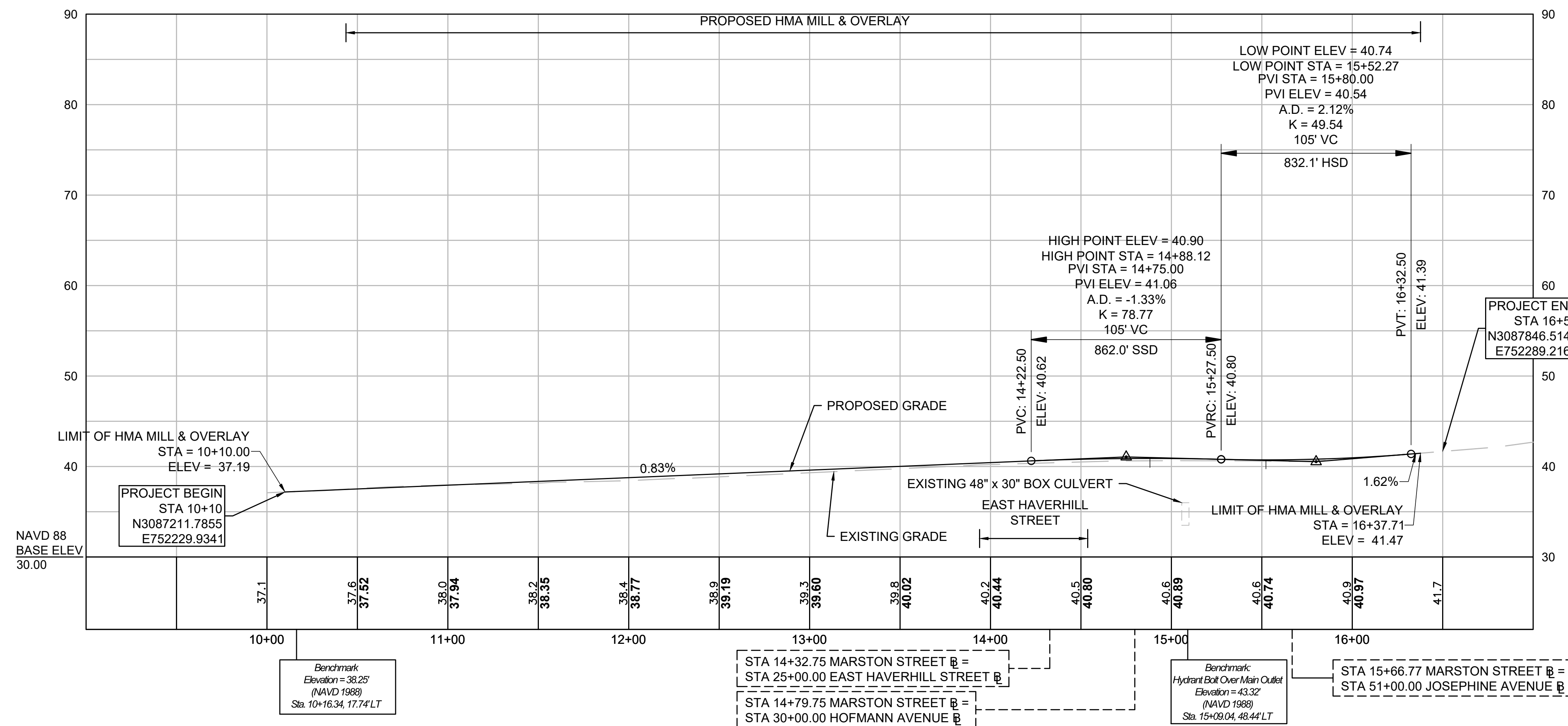
LAWRENCE MARSTON STREET & EAST HAVERHILL STREET

STATE	FED. AID PROJ. NO.	SHEET NO.	TOTAL SHEETS
MA	-	4	7
PROJECT FILE NO. 610923			

PRELIMINARY RIGHT OF WAY CRITICAL PROFILES



MARSTON STREET



LAWRENCE
MARSTON STREET & EAST HAVERHILL STREET

PROJECT TOTALS			
AFFECTED PROPERTIES	FEE TAKINGS	PERMANENT EASEMENTS	TEMPORARY EASEMENTS
6	0	11	13

STATE	FED. AID PROJ. NO.	SHEET NO.	TOTAL SHEETS
MA	-	5	7

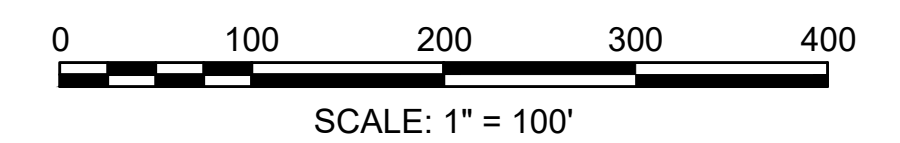
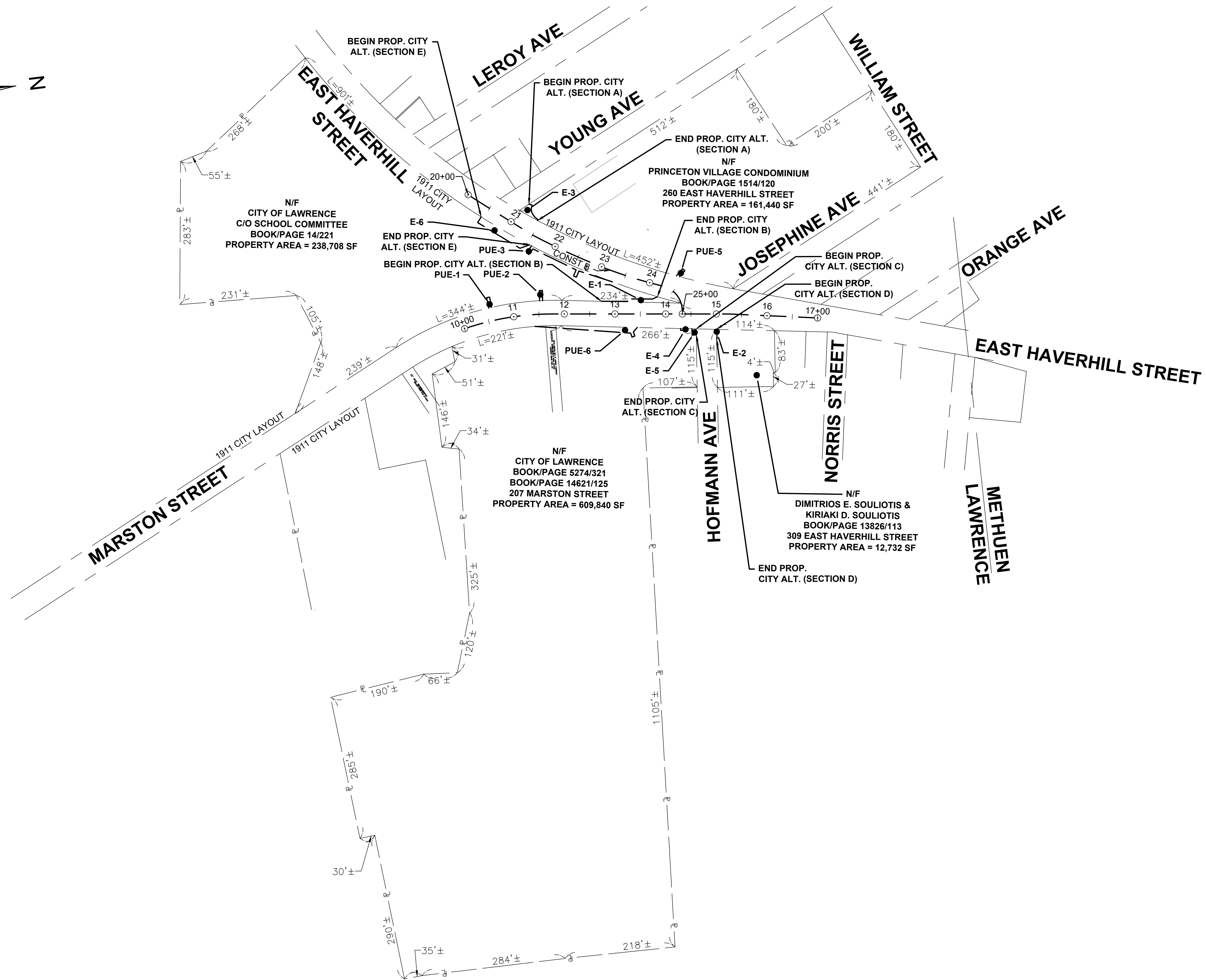
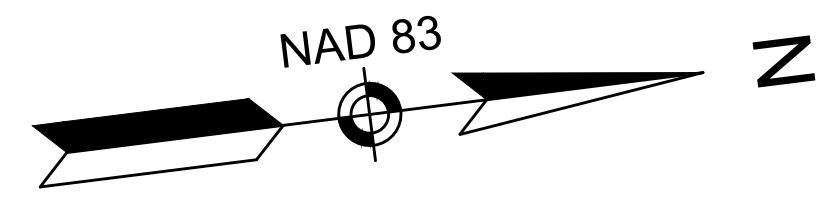
PROJECT FILE NO. 610923
**PRELIMINARY RIGHT OF WAY
PARCEL SUMMARY SHEET**

PARCEL NO.	PLAN SHEET NO.	TITLEHOLDER	TITLE REFERENCE				AREA (S.F. +/-)						TOTAL PROPERTY AREA (S.F.)	FRONTAGE ON ROW PLAN (FT.)	PROPERTY ADDRESS	REMARKS	LAND RESTRICTION FROM THE DEED
			DEED BOOK	PAGE NO.	LCC NO.	CERT NO.	TAKEN		EASEMENT		TOTAL TAKEN	REMAINING					
							CITY	STATE	TYPE	AREA							
E - 1	7	CITY OF LAWRENCE, C/O SCHOOL COMMITTEE	14	221										1,718	MARSTON STREET	ROADWAY, SHARED-USE PATH, TRAFFIC CONTROL EQUIPMENT, OVERHEAD WIRES, REMOVAL OF UTILITY POLE	
E - 6	7	CITY OF LAWRENCE, C/O SCHOOL COMMITTEE	14	221										1,718	MARSTON STREET	ROADWAY, SIDEWALK, DRAINAGE STRUCTURES AND PIPES, BOLLARDS, SIGNS, MAILBOXES	
PUE - 1	7	CITY OF LAWRENCE, C/O SCHOOL COMMITTEE	14	221										1,718	MARSTON STREET	RELOCATED ANCHOR POLE AND GUY WIRE, SITE GRADING (MAX 2:1)	
PUE - 2	7	CITY OF LAWRENCE, C/O SCHOOL COMMITTEE	14	221										1,718	MARSTON STREET	RELOCATED ANCHOR POLE AND GUY WIRE, SITE GRADING (MAX 2:1)	
PUE - 3	7	CITY OF LAWRENCE, C/O SCHOOL COMMITTEE	14	221										1,718	MARSTON STREET	RELOCATED UTILITY POLES AND GUY WIRES, OVERHEAD WIRES, WALK RECONSTRUCTION, SITE GRADING (MAX 2:1)	
TE - 1	7	CITY OF LAWRENCE, C/O SCHOOL COMMITTEE	14	221										1,718	MARSTON STREET	GRADING (MAX 2:1), TREE TRIMMING, HMA DRIVEWAY RECONSTRUCTION, SIDEWALK CONSTRUCTION, TREE PROTECTION, DRAINAGE STRUCTURE ADJUSTMENT	
TE - 2	7	CITY OF LAWRENCE, C/O SCHOOL COMMITTEE	14	221										1,718	MARSTON STREET	GRADING (MAX 2:1), TREE TRIMMING	
TE - 3	7	CITY OF LAWRENCE, C/O SCHOOL COMMITTEE	14	221										1,718	MARSTON STREET	GRADING (MAX 2:1), SIGN REMOVAL AND RESETTING, REMOVAL OF LIGHT POLES	
TE - 4	7	CITY OF LAWRENCE, C/O SCHOOL COMMITTEE	14	221										1,718	MARSTON STREET	GRADING (MAX 3:1), SIDEWALK CONSTRUCTION	
TE - 5	7	CITY OF LAWRENCE, C/O SCHOOL COMMITTEE	14	221										1,718	MARSTON STREET	GRADING (MAX 3:1), WALK CONSTRUCTION	
E-5	7	CITY OF LAWRENCE	5274 14621	321 125										602	207 MARSTON STREET	SIDEWALK, GUY WIRE	
E-4	7	CITY OF LAWRENCE	5274 14621	321 125										602	207 MARSTON STREET	TRAFFIC SIGNAL MAST ARM POLE & FOUNDATION, SITE GRADING (MAX 6:1)	
PUE-6	7	CITY OF LAWRENCE	5274 14621	321 125										602	207 MARSTON STREET	RELOCATED OVERHEAD WIRES, EXISTING UTILITY POLE AND GUY WIRE, REMOVAL OF PRIVATE SIGN AND CONCRETE PAD, CHAIN LINK FENCE REMOVAL AND RESETTING, HMA DRIVEWAY RECONSTRUCTION, REMOVAL OF VEGETATION, GRADING (MAX 6:1)	
TE - 6	7	CITY OF LAWRENCE	5274 14621	321 125										602	207 MARSTON STREET	REMOVAL OF VEGETATION, GRADING (MAX 6:1)	
TE-13	7	CITY OF LAWRENCE	5274 14621	321 125										602	207 MARSTON STREET	REMOVAL OF PRIVATE SIGN AND CONCRETE PAD, CHAIN LINK FENCE REMOVAL AND RESETTING	
TE-14	7	CITY OF LAWRENCE	5274 14621	321 125										602	207 MARSTON STREET	GRADING (MAX 3:1), REMOVAL OF PRIVATE SIGN AND CONCRETE PAD, CHAIN LINK FENCE REMOVAL AND RESETTING	
E - 2	7	DIMITRIOS E. SOULIOTIS & KIRIAKI D. SOULIOTIS	13826	113										229	309 EAST HAVERHILL STREET	SIDEWALK	
TE - 7	7	DIMITRIOS E. SOULIOTIS & KIRIAKI D. SOULIOTIS	13826	113										229	309 EAST HAVERHILL STREET	HMA DRIVEWAY RECONSTRUCTION, SIDEWALK RECONSTRUCTION	
TE - 8	7	VINFEN CORPORATION	13611	181										62	315 EAST HAVERHILL STREET	HMA DRIVEWAY RECONSTRUCTION	
TE - 9	7	ROLLINS REALTY TRUST	7547	327										123	256 - 258 EAST HAVERHILL STREET	SIDEWALK RECONSTRUCTION, GRADING (MAX 3:1), CHAIN LINK FENCE REMOVAL AND STACKING	
E - 3	7	PRINCETON VILLAGE CONDOMINIUM	1514	120										1,585	260 EAST HAVERHILL STREET	ROADWAY, SIDEWALK, SIGN	
PUE - 5	7	PRINCETON VILLAGE CONDOMINIUM	1514	120										1,585	260 EAST HAVERHILL STREET	RELOCATED ANCHOR POLE AND GUY WIRES, HEDGE REMOVAL, SITE GRADING (MAX 6:1)	
TE - 10	7	PRINCETON VILLAGE CONDOMINIUM	1514	120										1,585	260 EAST HAVERHILL STREET	GRADING (MAX 6:1), HEDGE TRIMMING, WALK RECONSTRUCTION, HMA CURB RECONSTRUCTION, DRIVEWAY APRON RESURFACING, ACCESS TO RELOCATED UTILITY POLE, PROP MULCH INSTALLATION, TREE PROTECTION FENCE, AIR EXCAVATION AND ROOT PRUNING	
TE - 12	7	PRINCETON VILLAGE CONDOMINIUM	1514	120										1,585	260 EAST HAVERHILL STREET	GRADING (MAX 10:1), WALK RECONSTRUCTION, HEDGE REMOVAL	

LAWRENCE
MARSTON STREET & EAST HAVERHILL STREET

STATE	FED. AID PROJ. NO.	SHEET NO.	TOTAL SHEETS
MA	-	6	7
PROJECT FILE NO.		610923	

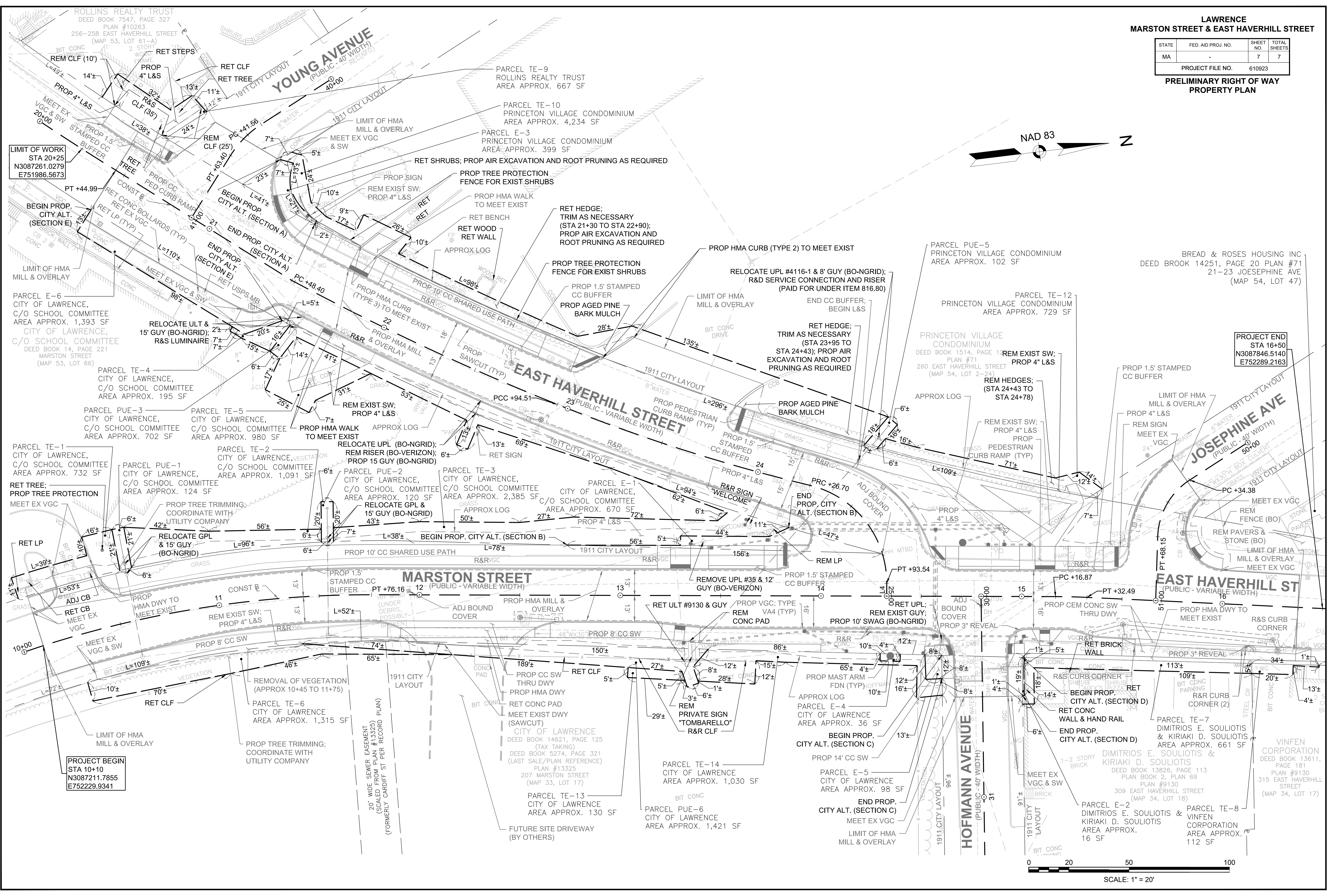
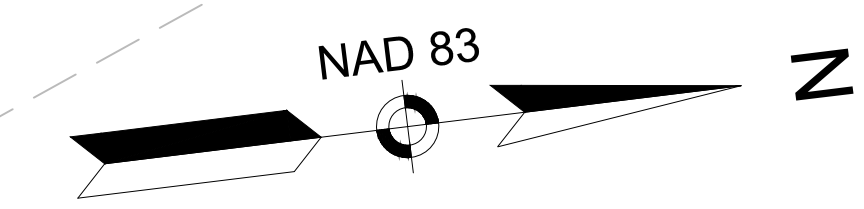
PRELIMINARY RIGHT OF WAY
LOCATION PLAN



**LAWRENCE
MARSTON STREET & EAST HAVERHILL STREET**

STATE	FED. AID PROJ. NO.	SHEET NO.	TOTAL SHEETS
MA	-	7	7
PROJECT FILE NO. 610923			

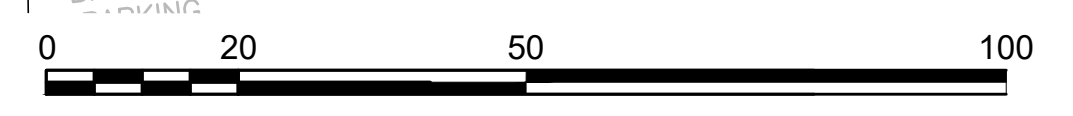
**PRELIMINARY RIGHT OF WAY
PROPERTY PLAN**



**LIMIT OF WORK
STA 20+25
N3087261.0279
E751986.5673**

**PROJECT END
STA 16+50
N3087846.5140
E752289.2163**

**PROJECT BEGIN
STA 10+10
N3087211.7855
E752229.9341**



SCALE: 1" = 20'