

*City of Lawrence
Francis M. Leahy Elementary School
Presentation To LAE Board November 9, 2022*



Leahy School Site



Francis M, Leahy School,
Lawrence, MA



1st Floor



2nd Floor



- MSBA CATEGORIES**
- CORE ACADEMIC
 - SPECIAL EDUCATION
 - ART/MUSIC/VOCATION
 - VOCATIONS AND TECHNOLOGY
 - MEDIA CENTER
 - DINING AND FOOD SERVICE
 - ADMIN/GUIDANCE
 - TOILETS
 - CUSTODIAL AND MAINTENANCE
 - UNOCCUPIED MEP
 - UNOCCUPIED STORAGE
 - CIRCULATION

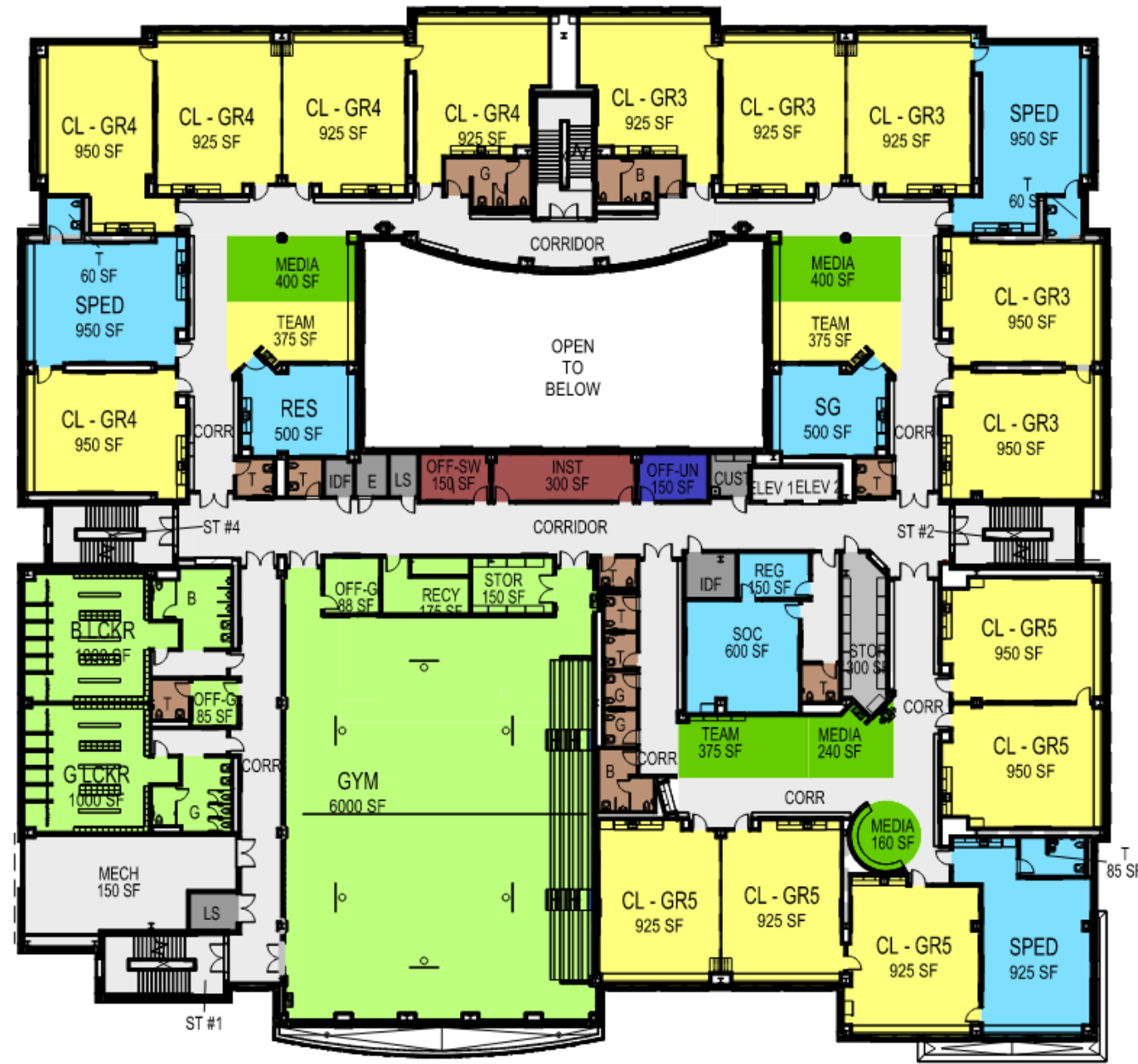
2ND FLOOR PLAN

0 7.5' 15' 30'



SCALE: 1" = 30' - 0"

3rd Floor



3RD FLOOR PLAN
 0 7.5' 15' 30'
 SCALE: 1" = 30' - 0"

4th Floor



5th Floor



MSBA CATEGORIES

- ART/MUSIC/OCATION
- HEALTH AND PYS. ED.
- NON PROGRAMMED SPACES
- TOILETS
- UNOCCUPIED STORAGE
- CIRCULATION

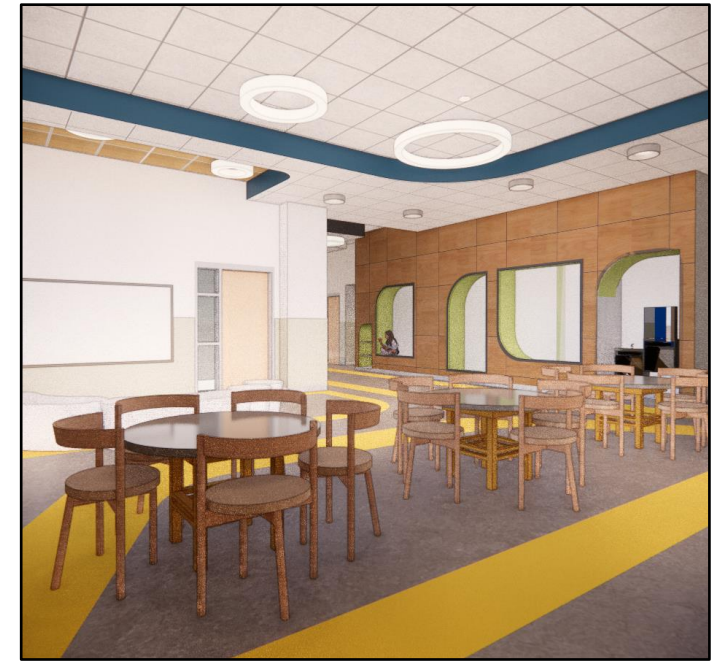
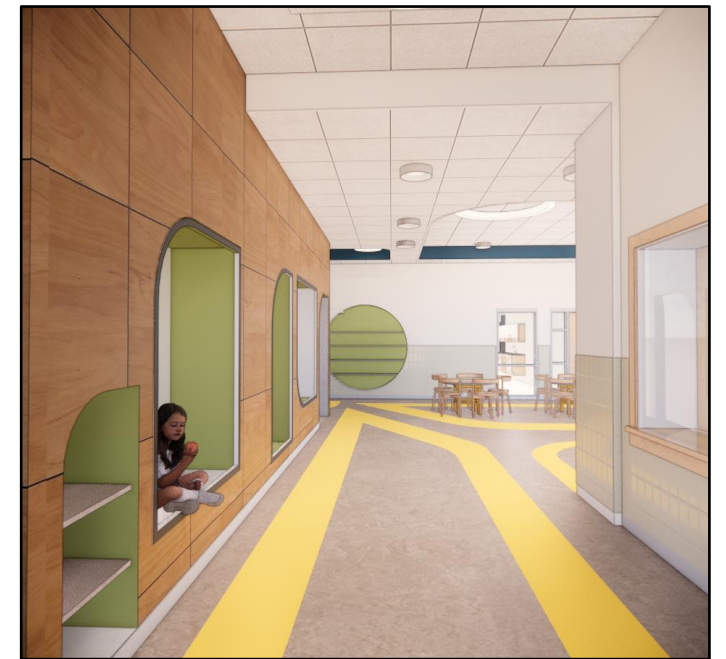
5TH FLOOR PLAN



Lobby



Kindergarten Team Area



Typical Classroom



Team /Media, GR. 1-8, type 1



Team /Media, GR. 1-8, type 2



Cafetorium



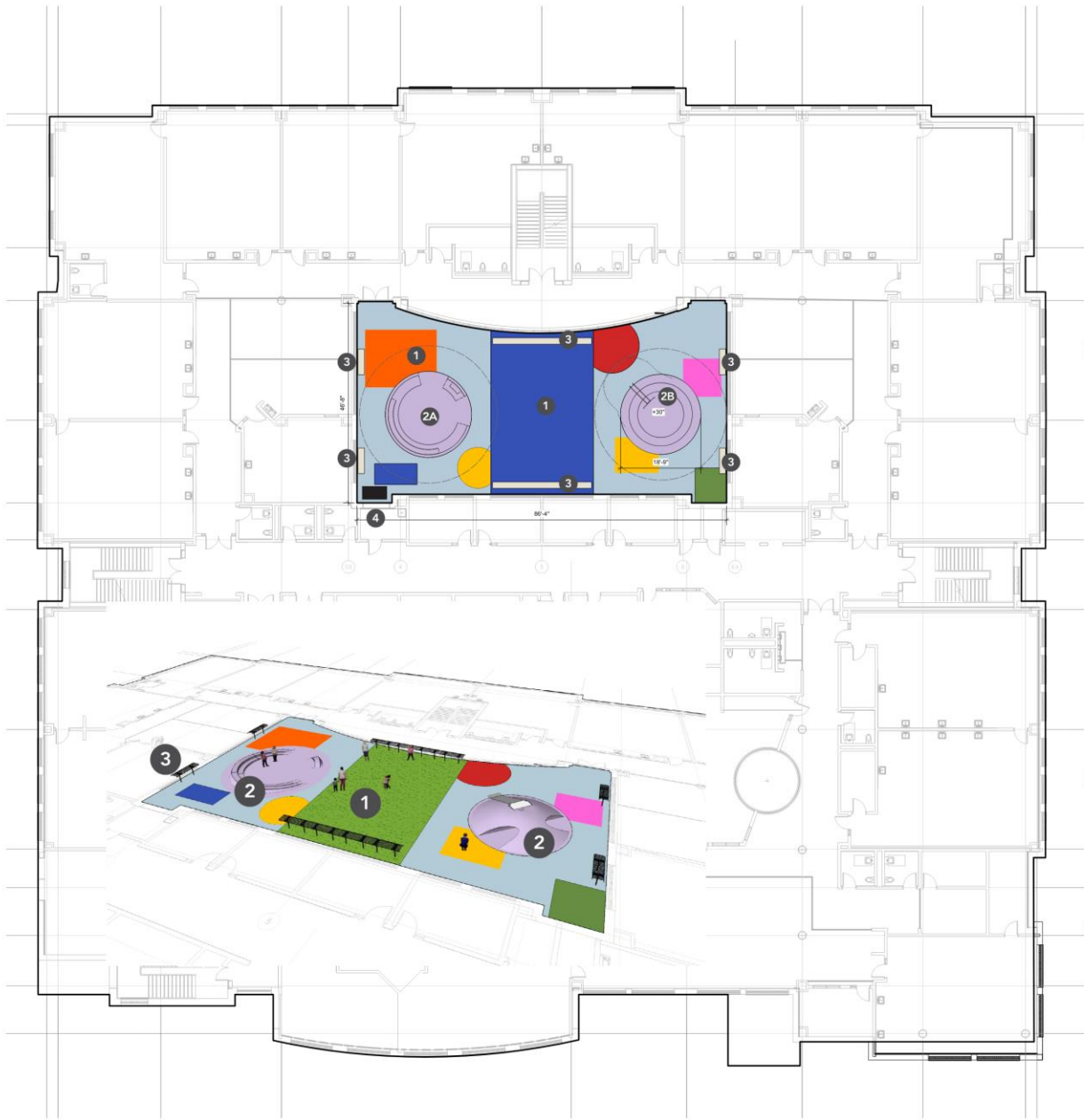
Media Center



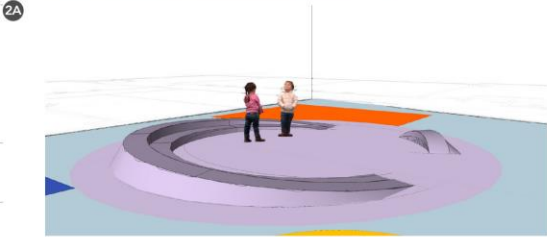
Technology



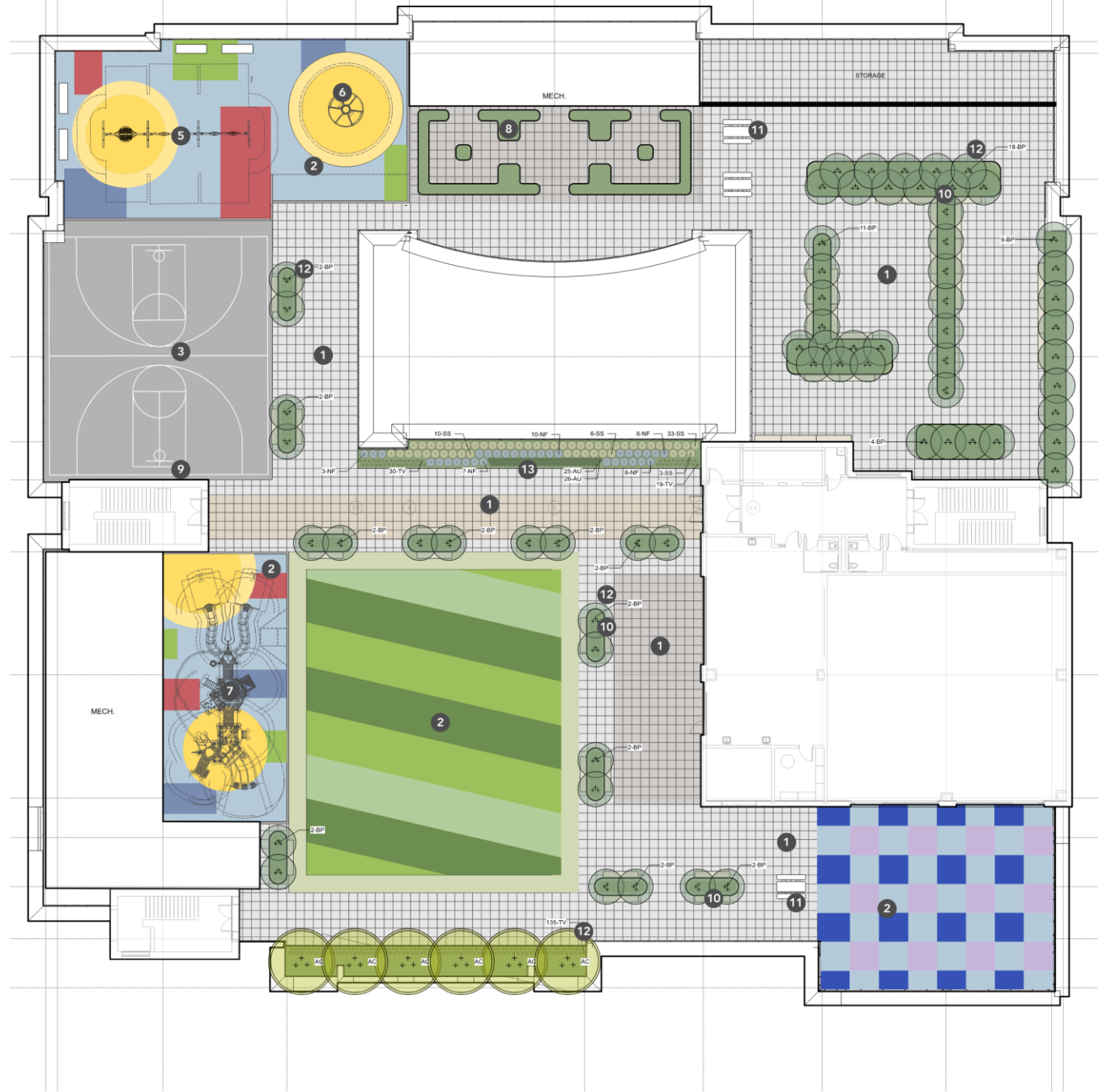
Second Floor Play Area



PRECEDENT IMAGERY



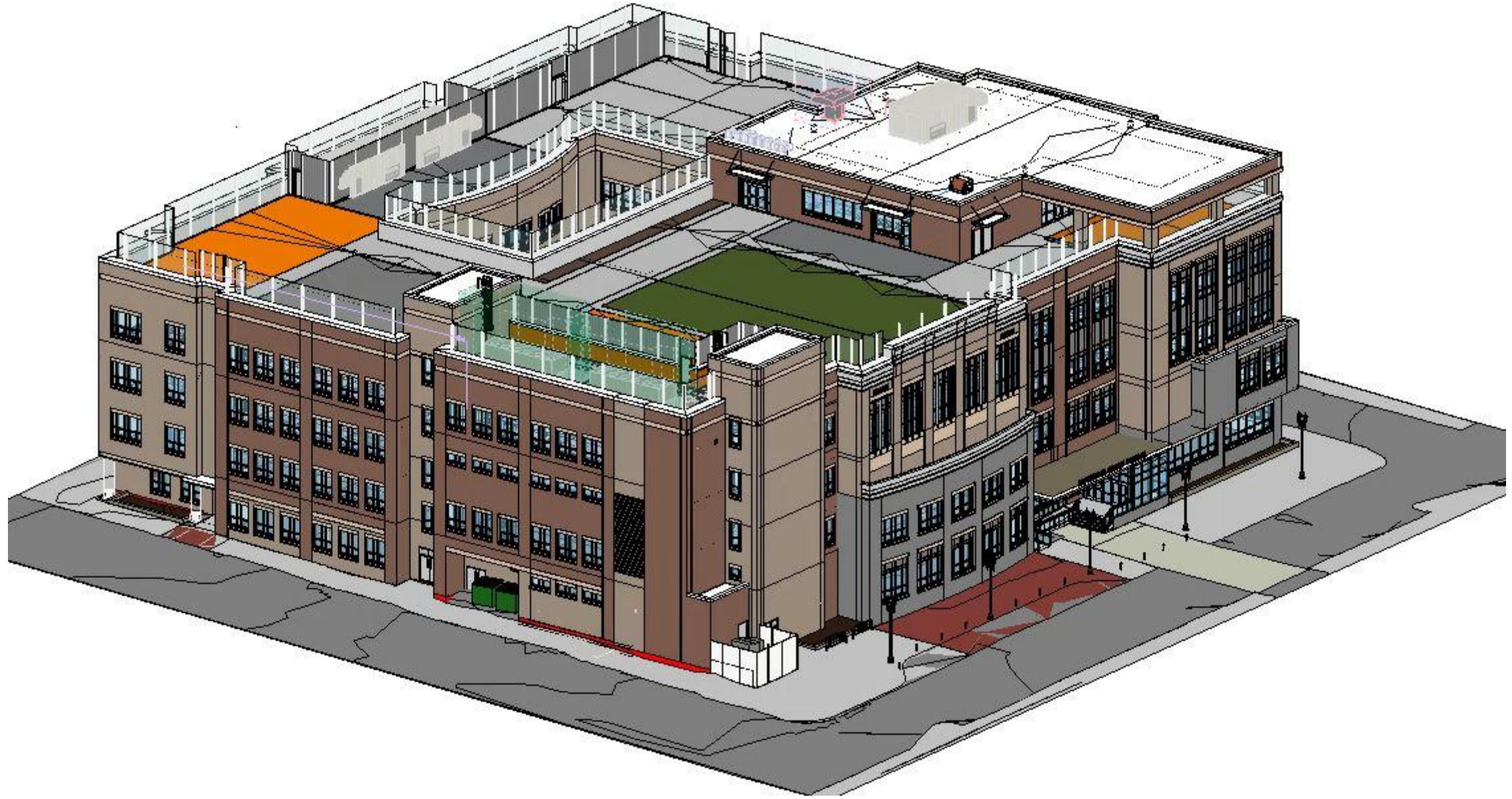
Roof Top Play Area



Exterior Isometric



Exterior Isometric



Current Project Schedule:

60% Design Submission to the MSBA - November 17, 2022

Early Site Package: Demolition and Abatement (tentatively) January 2023 through April 2023

Prequalification of GCs and Filed Subcontractors: December 2022 through February 2023

Bidding: March 2023 through April 2023

Construction: May 2023 to April 2025

Move-in: July 2025

Project Construction/Total Project Cost Estimates:

Phase	Construction Cost	Total Project Cost
Schematic Design	\$81,886,297	\$103,740,911
Design Development (After Value Engineering)	\$81,844,994	\$103,740,911
60% Design (Before Value Engineering)	\$82,520,000	\$103,740,911

Vote to Submit to the MSBA:

“The LAE Board recommends the submission of the 60% Construction Documents for the Francis M. Leahy Elementary School to the MSBA Board.”

Thank You