

City of Lawrence Francis M. Leahy Elementary School



Agenda

- Review and approve District's Educational Plan
- Review and approve the new 1,000 Student K-8 School
- Vote to submit Preferred Schematic Report to MSBA

Educational Plan

- Co-Located School
- Enhanced Student Support Spaces
- Next Generation Learning Environments
- Before and After School Programs

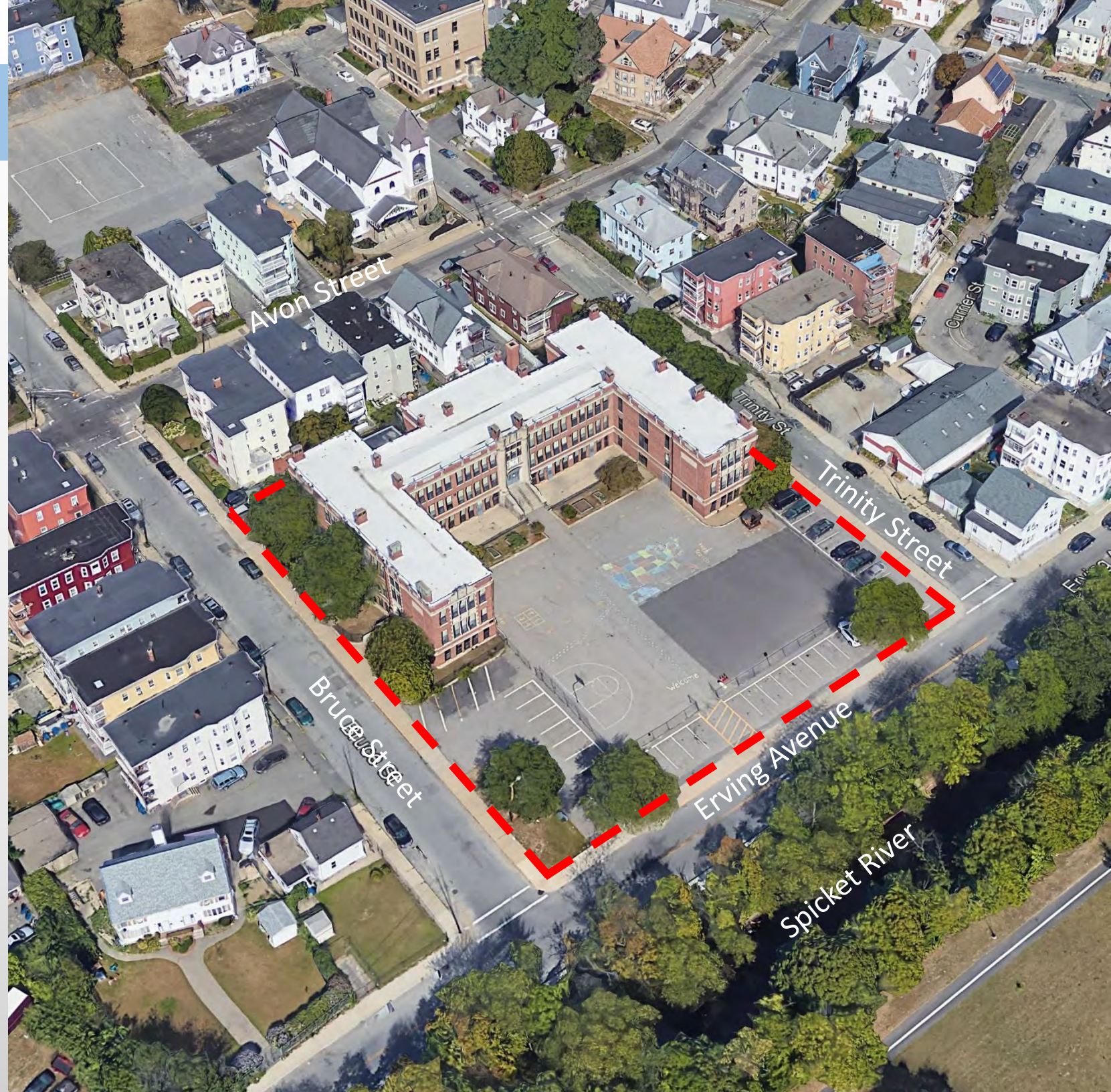
Untitled Map
Write a description for your map.

Existing Site Conditions



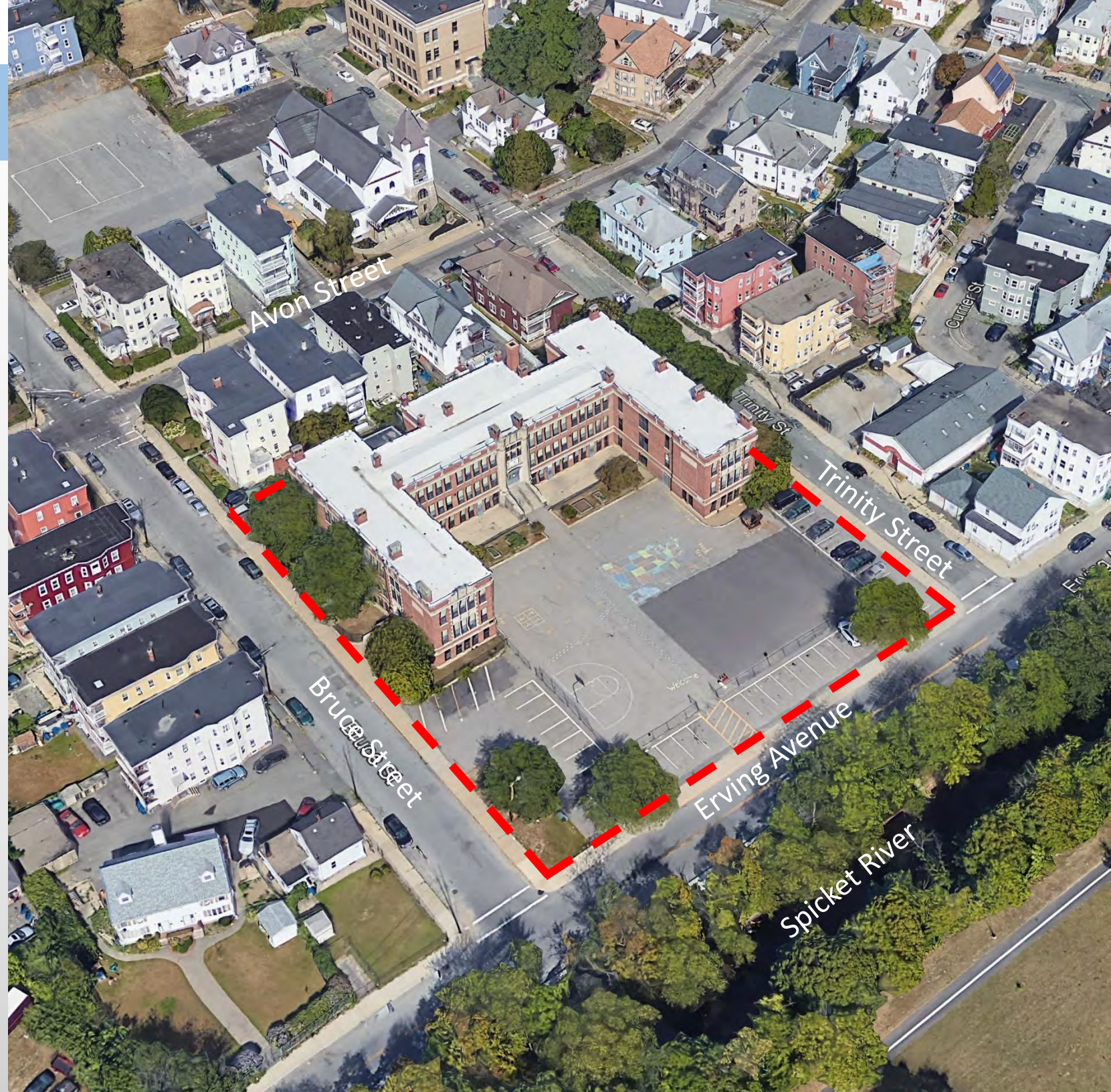
Site Constraints

- Zoning Relief Requirements



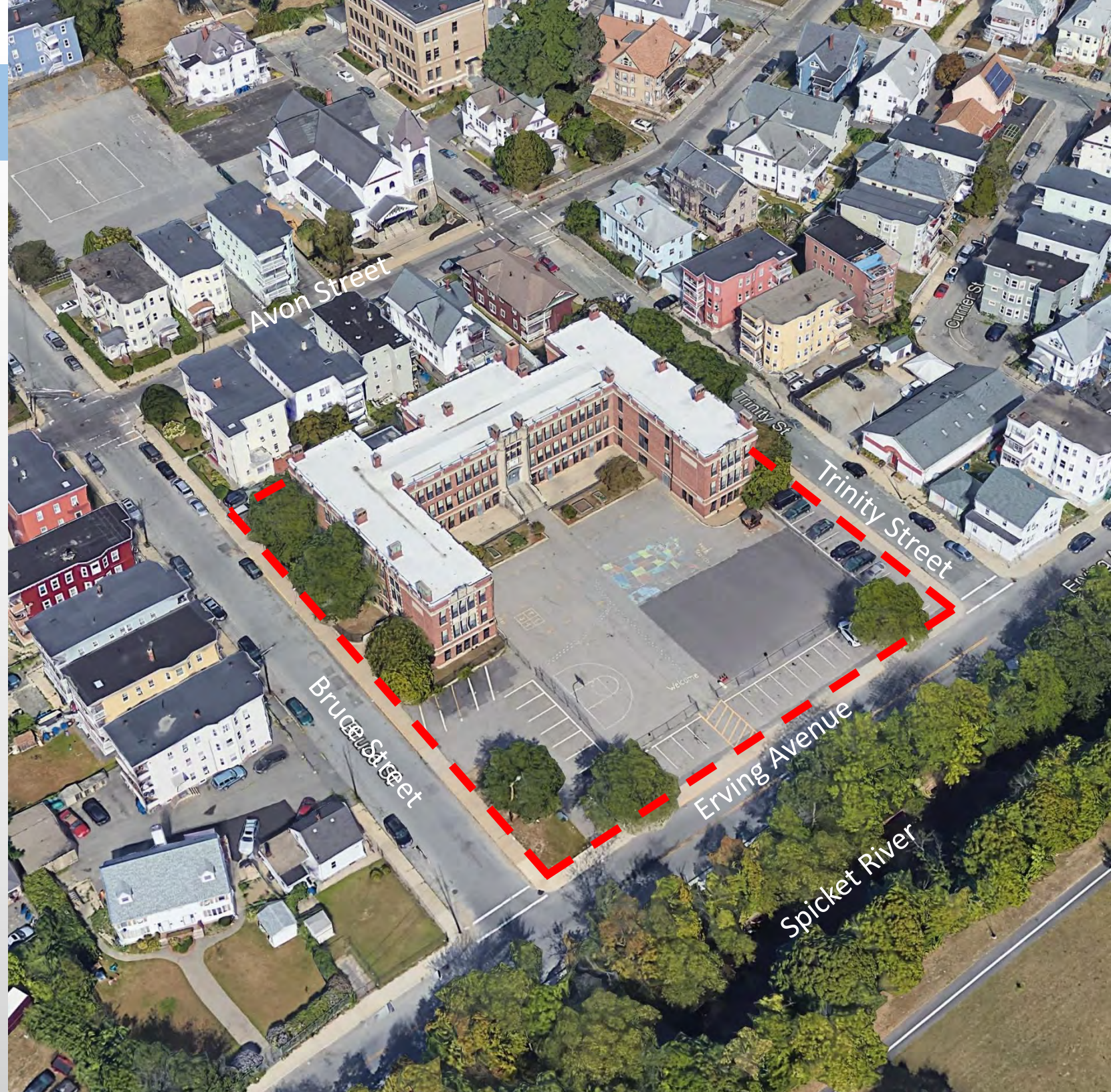
Site Constraints

- Zoning Relief Requirements
- Swing space
 - off site classrooms
 - construction lay down area



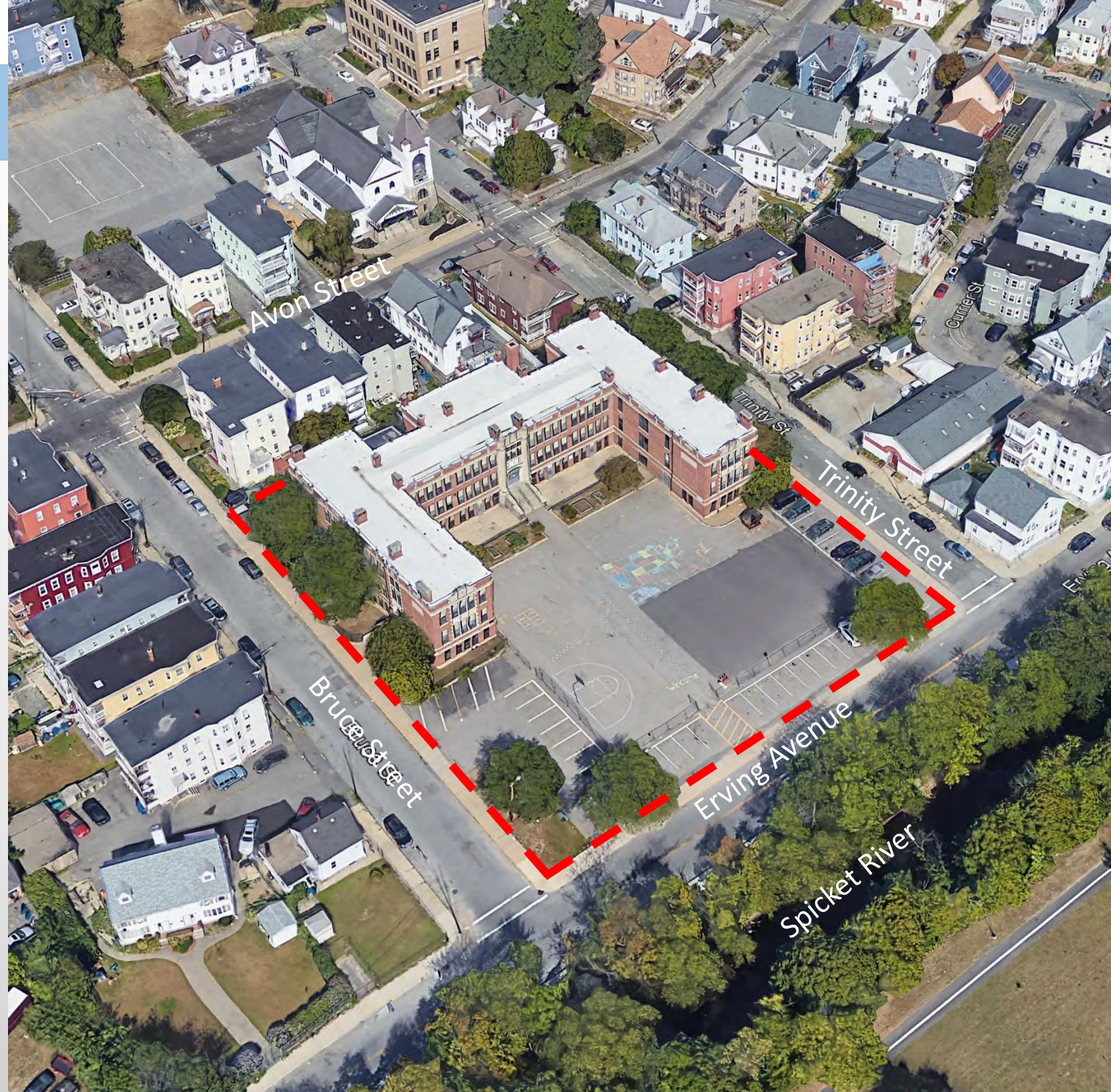
Site Constraints

- Zoning Relief Requirements
- Swing space
 - off site classrooms
 - construction lay down area
- Limited parking on site



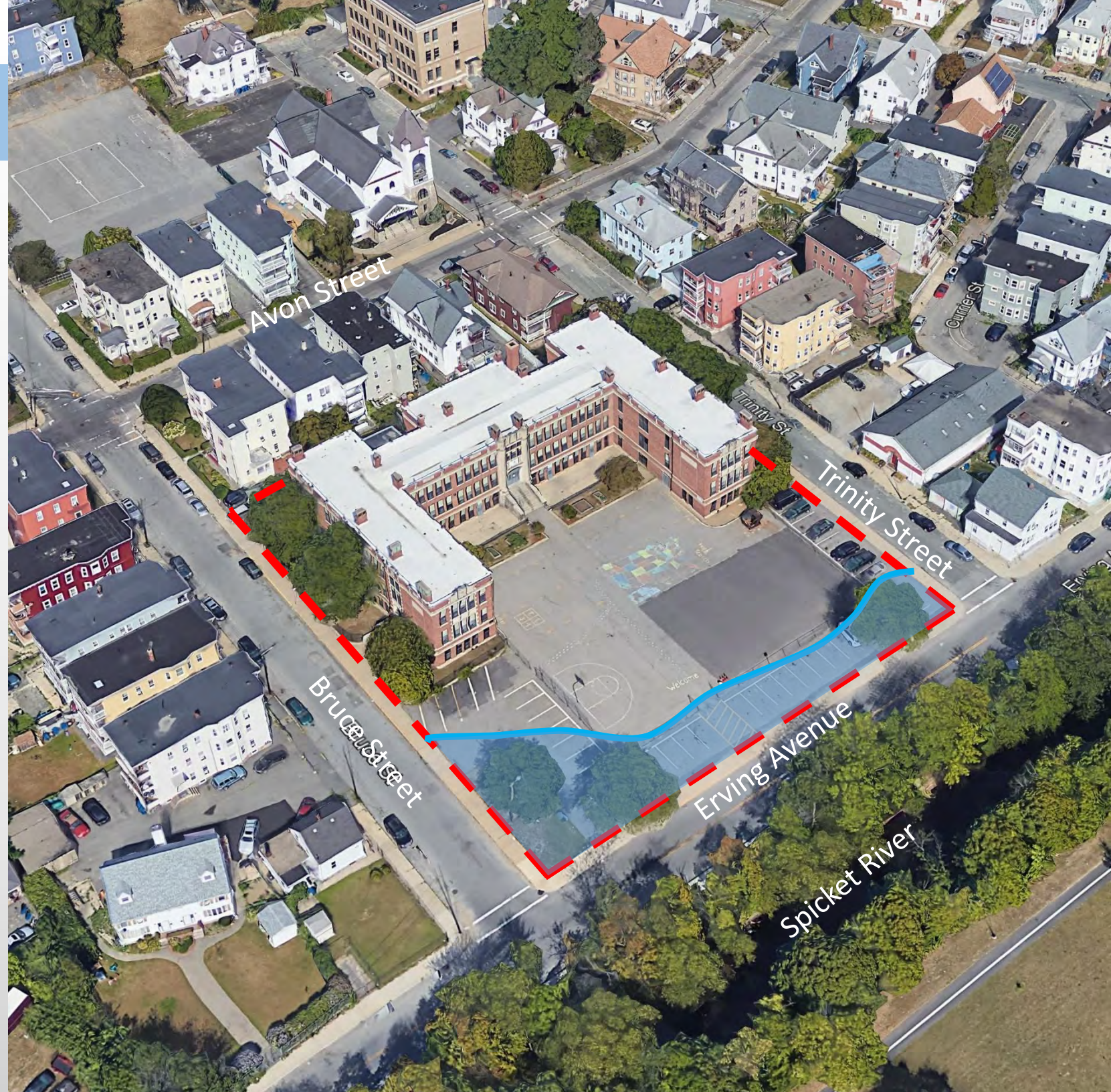
Site Constraints

- Zoning Relief Requirements
- Swing space
 - off site classrooms
 - construction lay down area
- Limited parking on site
- New play space limited to roof



Site Constraints

- Zoning Relief Requirements
- Swing space
 - off site classrooms
 - construction lay down area
- Limited parking on site
- New play space limited to roof
- 100-year flood plain



1000 Students New Construction



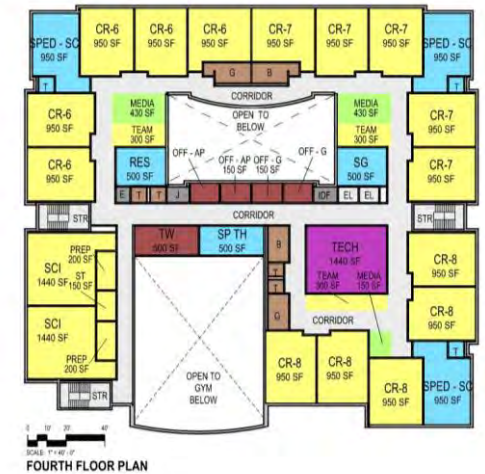
ROOF



SECOND FLOOR



THIRD FLOOR



FOURTH FLOOR



FIRST FLOOR

MSBA CATEGORIES

- CORE ACADEMIC
- ART/MUSIC/VOCATION
- MEDIA CENTER
- DINING AND FOOD SERVICE
- ADMIN/GUIDANCE
- MEDICAL
- NON PROGRAMMED SPACES
- TOILETS
- CUSTODIAL AND MAINTENANCE
- UNOCCUPIED MEP
- UNOCCUPIED STORAGE
- CIRCULATION

	Existing	New
Roof	0	6,220
4th Floor	0	39,895
3rd Floor	0	45,970
2nd Floor	0	39,505
1st Floor	0	41,825
Total		173,415
Building Total GSF:		173,415



FIRST FLOOR

LINE OF BUILDING ABOVE, TYPICAL

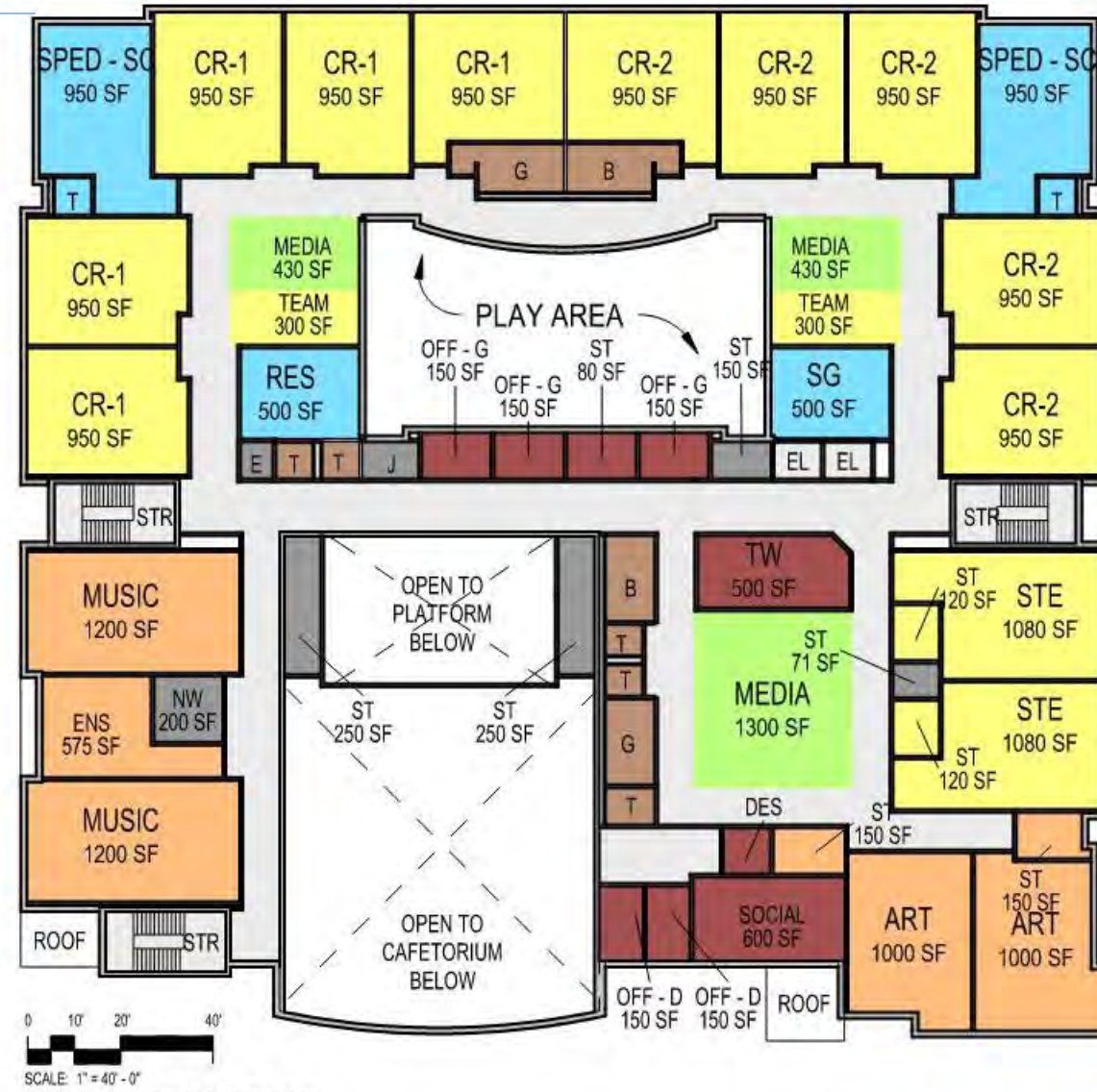


FIRST FLOOR PLAN

MSBA CATEGORIES

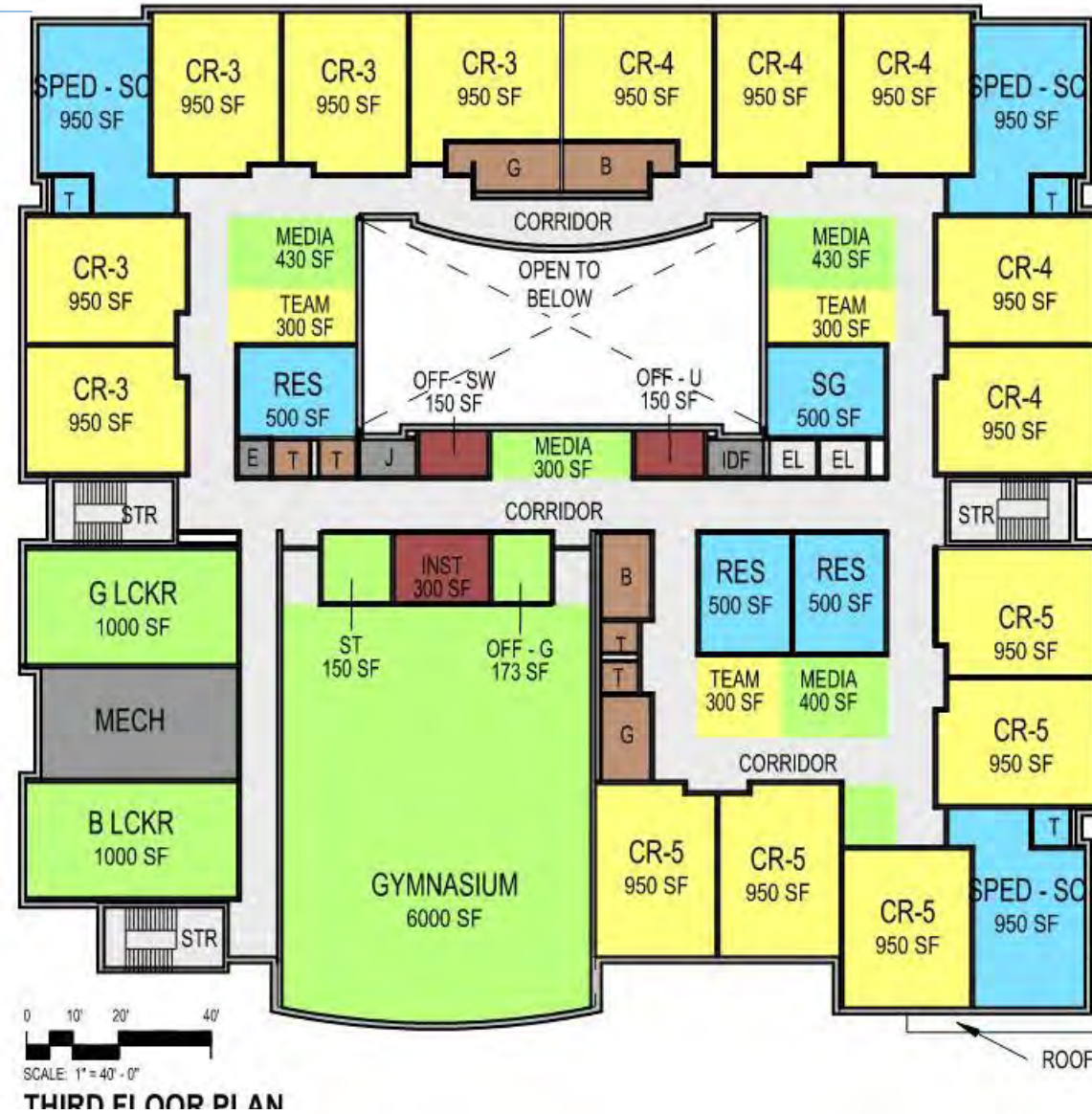
 CORE ACADEMIC	 NON PROGRAMMED SPACES
 ART/MUSIC/VOCATION	 TOILETS
 MEDIA CENTER	 CUSTODIAL AND MAINTENANCE
 DINING AND FOOD SERVICE	 UNOCCUPIED MEP
 ADMIN/GUIDANCE	 UNOCCUPIED STORAGE
 MEDICAL	 CIRCULATION

SECOND FLOOR

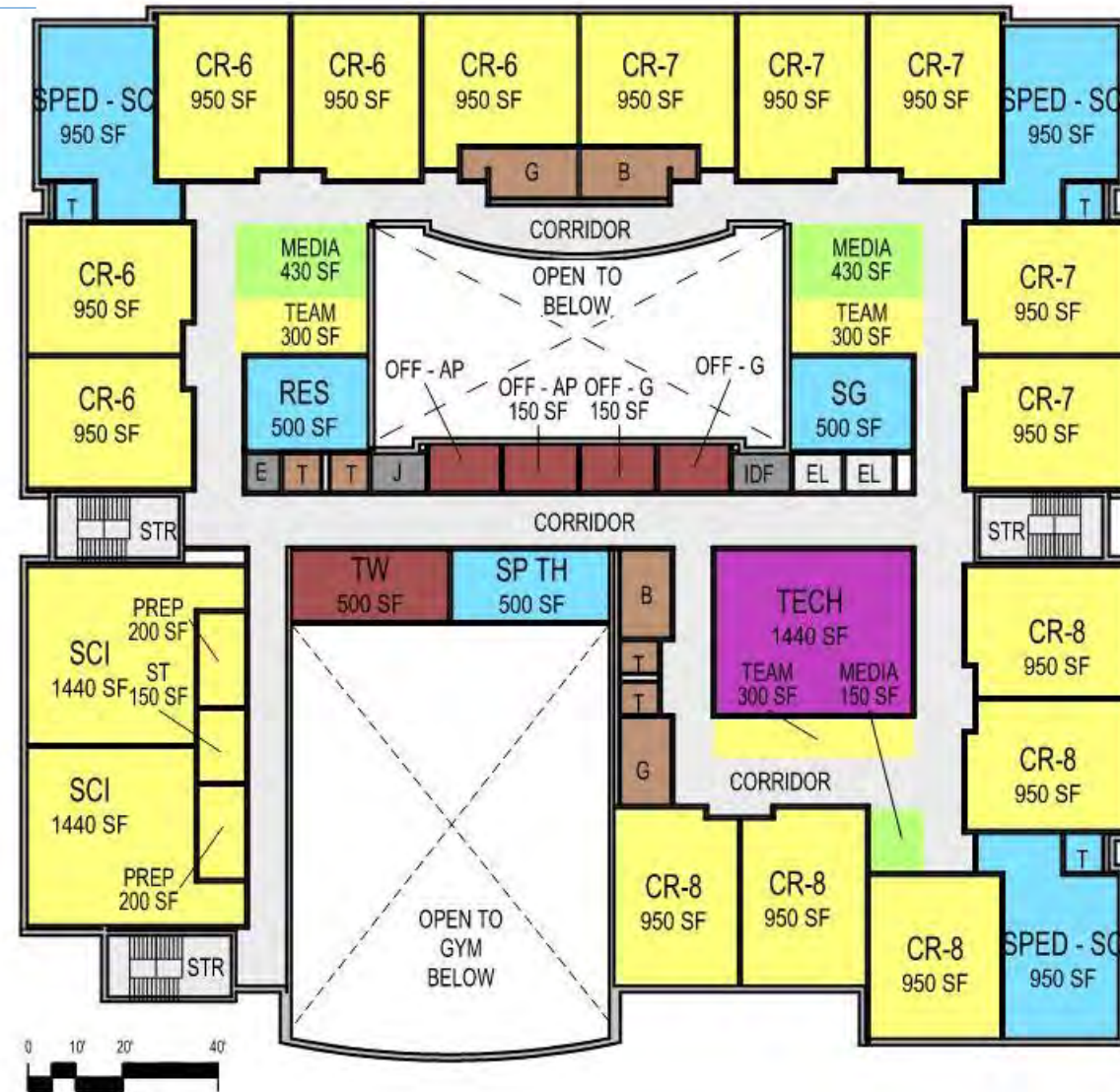


SECOND FLOOR PLAN

THIRD FLOOR



FOURTH FLOOR



MSBA CATEGORIES

- | | |
|---|---|
| CORE ACADEMIC | NON PROGRAMMED SPACES |
| ART/MUSIC/VOCATION | TOILETS |
| MEDIA CENTER | CUSTODIAL AND MAINTAINANCE |
| DINING AND FOOD SERVICE | UNOCCUPIED MEP |
| ADMIN/GUIDANCE | UNOCCUPIED STORAGE |
| MEDICAL | CIRCULATION |

ROOF



MSBA CATEGORIES

 CORE ACADEMIC	 NON PROGRAMMED SPACES
 ART/MUSIC/VOCATION	 TOILETS
 MEDIA CENTER	 CUSTODIAL AND MAINTENANCE
 DINING AND FOOD SERVICE	 UNOCCUPIED MEP
 ADMIN/GUIDANCE	 UNOCCUPIED STORAGE
 MEDICAL	 CIRCULATION

Aerial View



Roof Play Areas & Structures



Roof Play Areas & Structures

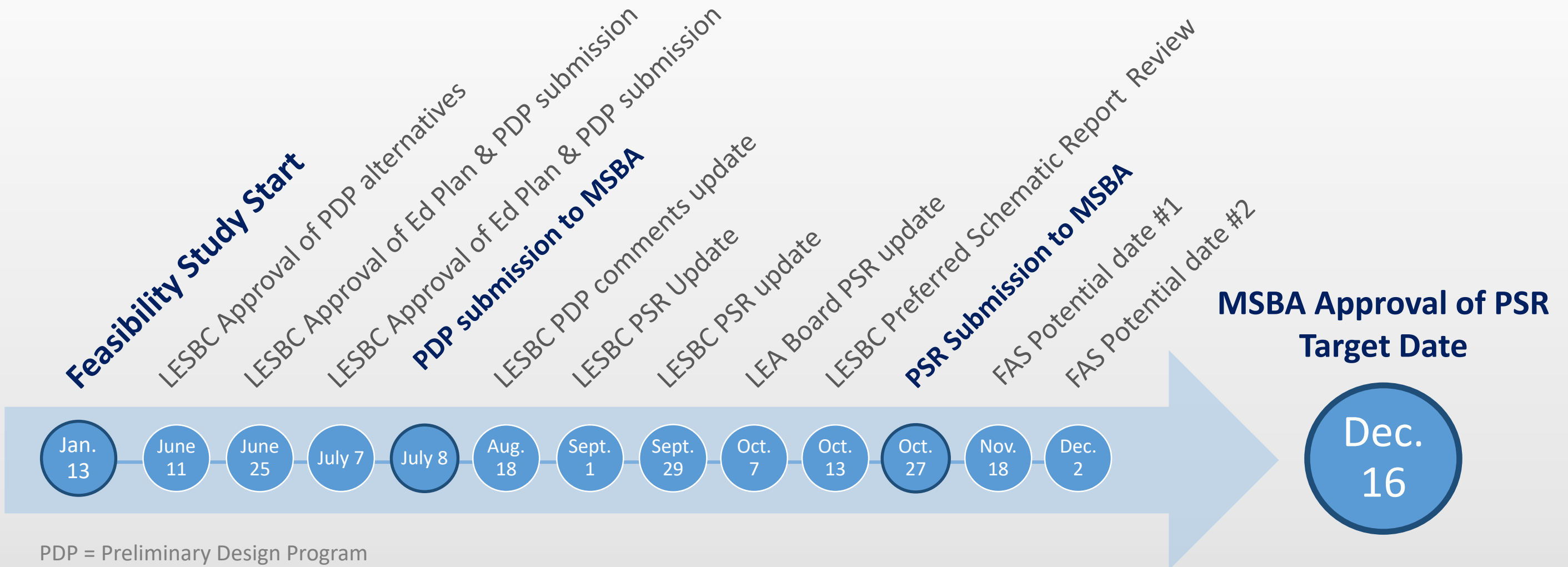


Preferred Schematic Report Cost Estimates:

Estimated Construction Costs

- **New Construction 1000 student K-8 /**
173,415 SF X \$445.00 = \$77,169,675
(Includes Site Work, Hazardous Materials Abatement, Building Demolition & Escalation)
- **Addition/Renovation 1000 student K-8 /**
171,639 SF X \$432.77 = \$74,281,481
(Includes Site Work, Hazardous Materials Abatement, Selective Demolition & Escalation)

Project Schedule

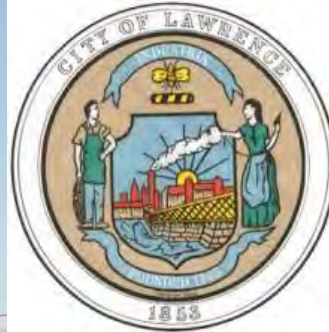


PDP = Preliminary Design Program
 PSR = Preferred Schematic Report
 FAS = Facilities Assessment Subcommittee

Next Steps:

- Preferred Schematic Report submission to MSBA - Oct. 27
- MSBA Facilities Assessment Subcommittee - Nov. 18 or Dec. 2
- MSBA Board Approval - Dec. 16

Thank You



Francis M. Leahy Elementary School,
Lawrence, MA

