



2020-21 SCHOOL REOPENING UPDATED Plan Overview .

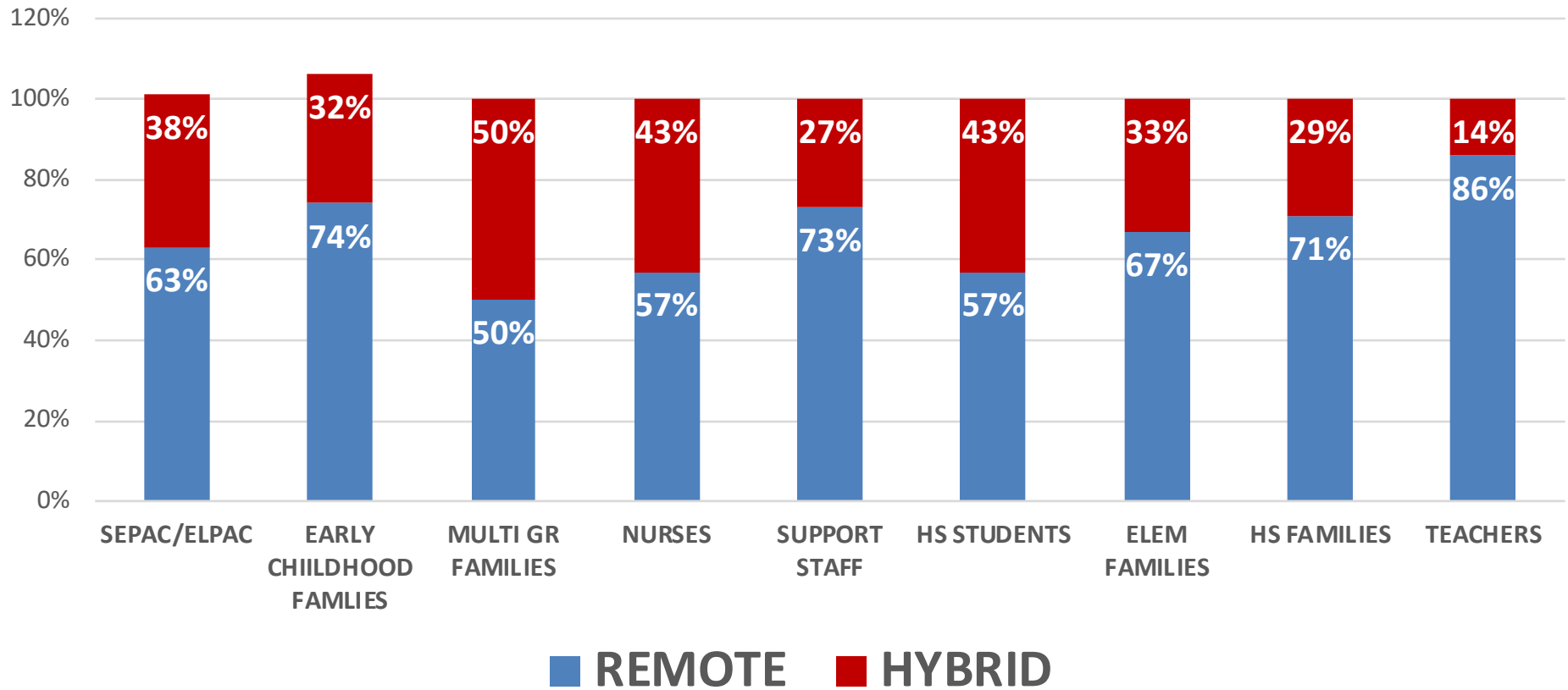
**Presentation for
Lawrence Alliance for Education and the Community**

August 12, 2020

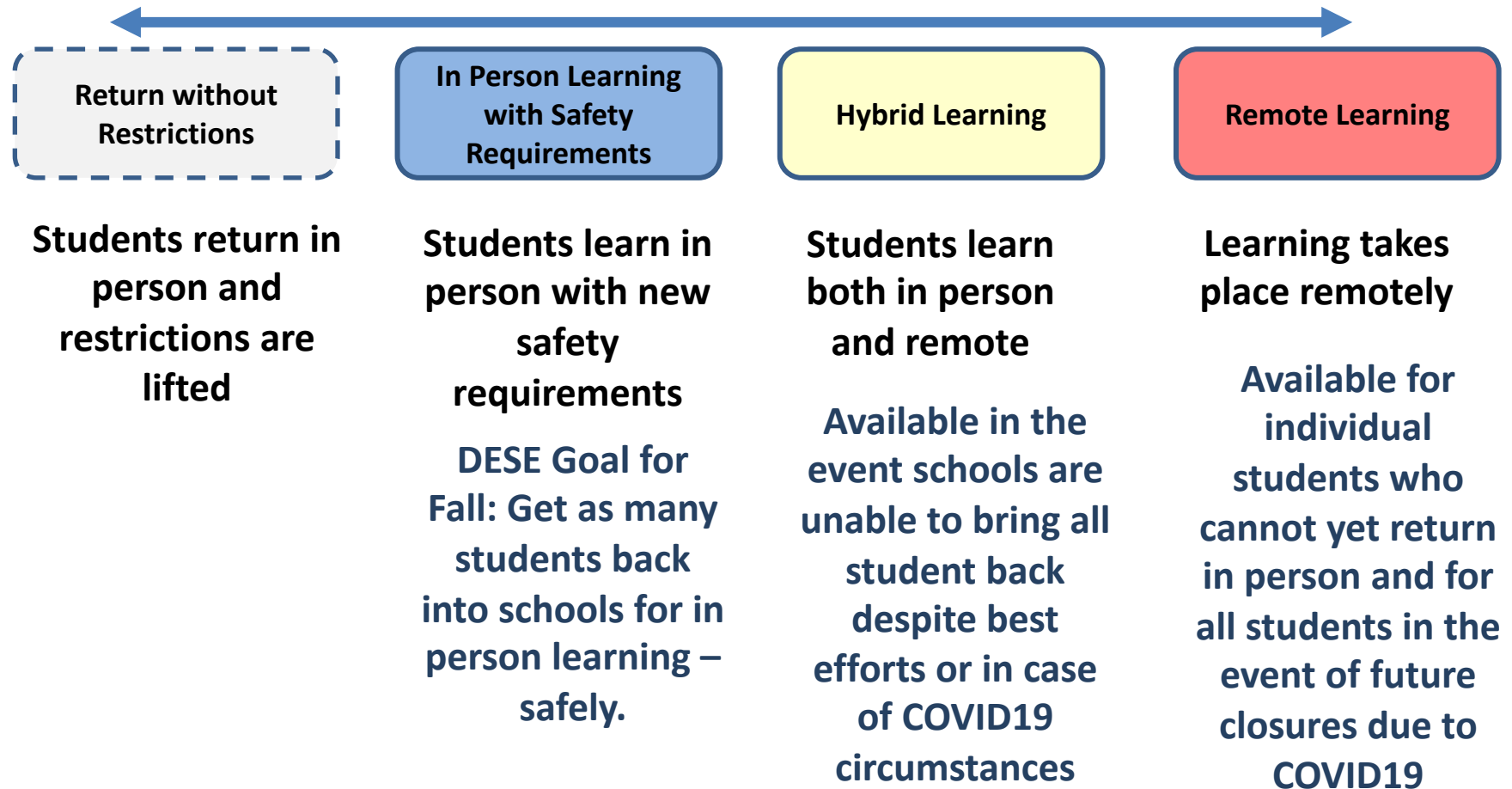
August 10-12, 2020

Feedback to Initial Reopening Plans

Superintendent's Listening Forums

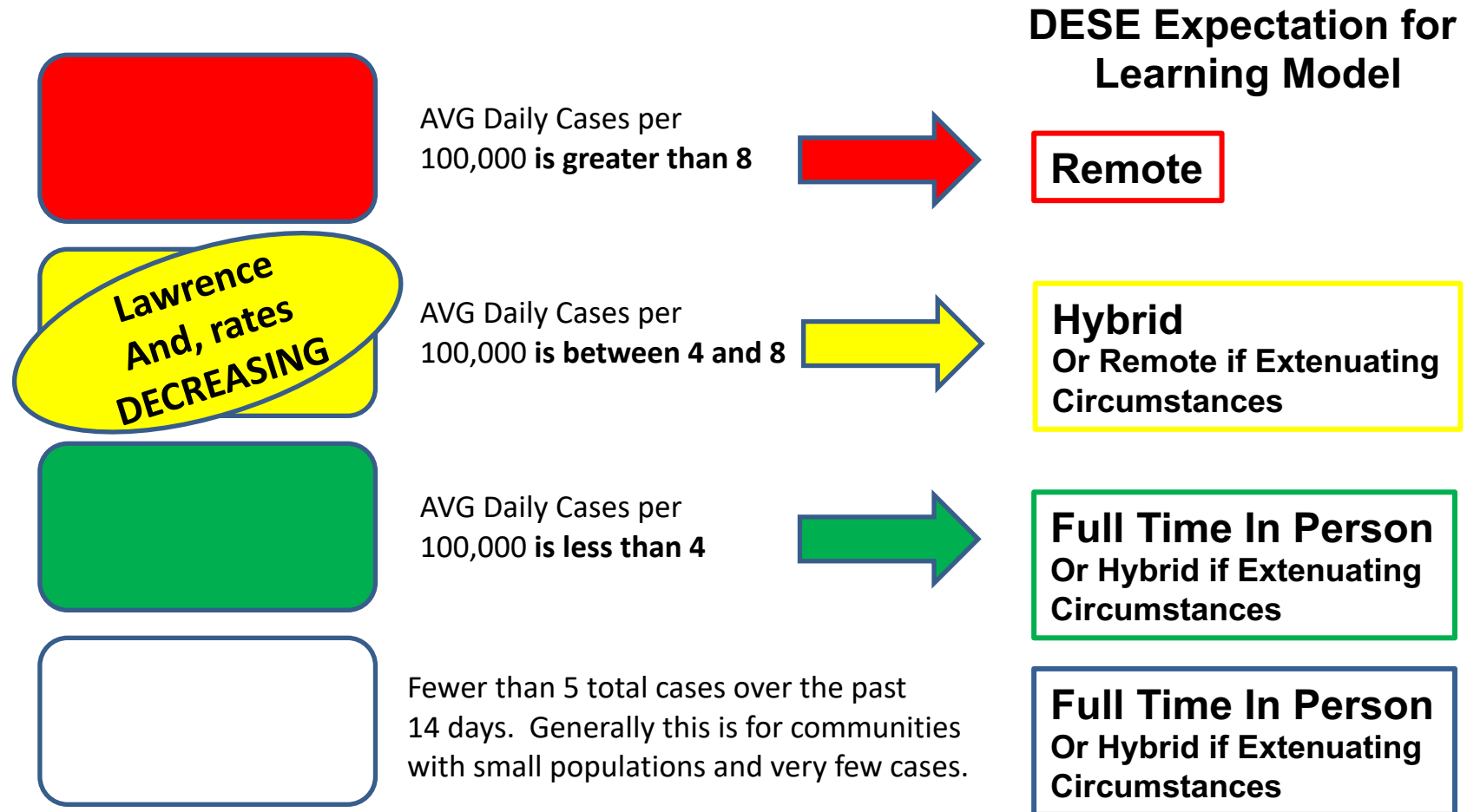


GOAL: Plan for 3 Possibilities on the Continuum



Across ALL MODELS, Districts need a PLAN for how SPECIAL POPULATIONS will receive necessary services and accommodations.

NEW MA Color-Coded Metric* – Additional DESE Guidance 8/11/20



* Measured as a 14 day rolling average and will be reported weekly online DPH dashboard.

REMINDER: Family Preference for a **FULL REMOTE** Model

All LPS families have the option of **full-time remote learning** regardless of the model we implement this fall.

To enroll a student in full remote learning, families must complete an Enrollment Form. This form Launched on **August 7th**.

TO DATE

603 (4%) Students have applied for Parent Selected Full Remote Learning



Full Remote Learning Model - Considerations

1. In-Person Learning in the Remote Learning Model

DESE recommends High Needs groups to attend in person even if the district is recommending a predominantly Fully Remote Model:

- Students with disabilities and English learners, particularly those with more intensive needs
- Students whose parents/caregivers report that they do not have access to reliable internet or a suitable learning space at home, especially students who are homeless or living in foster care
- Early learners - Grades PreK and Kindergarten

These HIGH NEEDS groups account for approximately **20%** of all LPS Students.

They will follow the SAME schedule as outlined in the **HYBRID MODEL**.

The **Parent Selected FULL REMOTE LEARNING MODEL** is available for these groups.

Additional Considerations for Full Remote Model

2. Devices and Connectivity

LPS will be sure all students are prepared with a 1:1 Device and Internet Connection (Hot Spot) if needed.

3. Attendance

Students must adhere to time on learning and attendance guidelines for Remote Learning.

While lessons will be both synchronous (with a teacher) and asynchronous (independent), attendance will be taken each period from 8:00 AM – 1:00 PM daily. Families of young children need to assign a family member or caretaker to support student schedules.

4. Grading

Assignments will be graded and aligned to state standards for mastery. Report Cards and Progress Reports will follow the typical calendar.

Full Remote Model – Schedules

Districtwide Student Hours for Remote Learning Model

| Student Population | Hours/Schedule |
|-----------------------------------|--|
| Pre-Kindergarten and Kindergarten | AM Session: Monday to Friday 8:00am-10:30am PM Session: Monday to Friday 12:00pm-2:30pm |
| Grades 1-8 | Monday to Friday 8:00am-1:00pm |
| Grades 9-12 | Monday to Friday 8:30am-2:00pm |

Districtwide Teacher Hours for Remote Learning Model

| Teacher Group | Hours/Schedule |
|-----------------------------------|---------------------------------|
| Pre-Kindergarten and Kindergarten | Monday to Friday 7:45am-3:00pm* |
| Grades K-8 | Monday to Friday 7:45am-3:00pm* |
| Grades 9-12 | Monday to Friday 8:15am-3:30pm* |

***In the Remote Learning Model, staff will be in person and facilitate learning from the classroom.**

Student Schedule for the Full Remote Learning Model, Grades 1-8

| | Monday - Friday |
|-----------------|---|
| 8:00am-8:30am | Morning Meeting/SEL Circle |
| 8:30am-9:15am | Core Content I (ELA, Math, Science, History/Social Studies) |
| 9:15am-10:00am | Core Content II (ELA, Math, Science, History/Social Studies) |
| 10:00am-10:15am | Structured Morning Break, Snack, Zoom Virtual Recess, Zoom Breakout Socials, etc. |
| 10:15am-11:00am | Core Content III (ELA, Math, Science, History/Social Studies) |
| 11:00am-11:30pm | Lunch on Your Own |
| 11:30pm-12:15pm | Core Content IV (ELA, Math, Science, History/Social Studies) |
| 12:15pm-12:45pm | Small Group Acceleration and Reinforcement |
| 12:45pm-1:00pm | Daily Wrap Up, Homework Assignments, Family Communication |
| 1:30pm-3:00pm | Districtwide Virtual Enrichment Camps (Optional) |

High Needs Student Schedule prioritized for In-Person Learning, Grades 1-8

20% of ALL Students

| | Monday, Tuesday, Thursday, Friday In-Person | Wednesday Remote |
|------------------------|--|---|
| 8:00am-8:30am | Morning Meeting/SEL Circle | Morning Meeting/SEL Circle |
| 8:30am-9:15am | Core Content I (ELA, Math, Science, History/Social Studies) | Core Content I (ELA, Math, Science, History/Social Studies) |
| 9:15am-10:00am | Core Content II (ELA, Math, Science, History/Social Studies) | Core Content II (ELA, Math, Science, History/Social Studies) |
| 10:00am-10:15am | Structured Morning Break, Snack, Recess, Zoom Breakout Socials, etc. | Structured Morning Break, Snack, Zoom Virtual Recess, Zoom Breakout Socials, etc. |
| 10:15am-11:00am | Core Content III (ELA, Math, Science, History/Social Studies) | Core Content III (ELA, Math, Science, History/Social Studies) |
| 11:00am-11:30pm | Lunch in the Classroom | Lunch on Your Own |
| 11:30pm-12:15pm | Core Content IV (ELA, Math, Science, History/Social Studies) | Core Content IV (ELA, Math, Science, History/Social Studies) |
| 12:15pm-12:45pm | Small Group Acceleration and Reinforcement | Small Group Acceleration and Reinforcement |
| 12:45pm-1:00pm | Daily Wrap Up, Homework Assignments, Family Communication | Daily Wrap Up, Homework Assignments, Family Communication |
| 1:30pm-3:00pm | Districtwide Virtual Enrichment Camps (Optional) | |

Student Schedule for the Full Remote Learning Model, Grades 9-12

| | A - Day Schedule | B - Day Schedule |
|------------------------|------------------|------------------|
| 8:30am-9:40am | Period 1 | Period 2 |
| 9:45am-10:55am | Period 3 | Period 4 |
| 11:00am-12:10pm | Period 5 | Period 6 |
| 12:10pm-12:40pm | Lunch | |
| 12:45pm-1:55pm | Period 7 | Period 8 |
| 2:00pm-2:30pm | CCP | |

Students will experience daily direct and interactive instruction (synchronous) per week alternating between A-Day Schedule Period 1, 3, 5, 7 and B-Day Schedule Period 2, 4, 6, 8. Every period meets for 70 minutes. Students will attend a daily College and Career Planning (CCP) Advisory for 30-minutes daily.

Resources for the Remote Learning Model

Expanded Instructional Resources for Digital Access (Hybrid or Full Remote)

Total Investment **\$1.5M** Title and CARES Funding

Including:

- Digital Platforms
- Social Emotional Learning Materials
- English Language Development Support
- Interventions
- Blended Learning (Print and Digital)
- Digital Text Sets
- Growth and Benchmark Assessments



Preparing for Reopening – Professional Learning

| Monday 8/24 | Tuesday 8/25 | Wednesday 8/26 | Thursday 8/27 | Friday 8/28 |
|---|---|---|---|--|
| | | | | New Staff Orientation *Human Resources *Informational Technology *New Teacher Support *School Based PD |
| Monday 8/31 - Remote | Tuesday 9/1 | Wednesday 9/2 - Remote | Thursday 9/3 - Remote | Friday 9/4 |
| All Staff School Orientation *School Based PD *School specific health and safety protocols | All Staff District Orientation *COVID-19 and Universal precautions *Social Emotional Supports *Standards Based Assessment and Grading *Learning Management Platforms | All Staff School Orientation *School Based PD | All Staff School Orientation *School Based PD | Labor Day Weekend - No School for Staff |
| Monday 9/7 | Tuesday 9/8 | Wednesday 9/9 | Thursday 9/10 | Friday 9/11 |
| Labor Day Weekend - No School for Staff | All Staff District and School Based Offerings *90 minute sessions on content-related topics offered to all staff by grade-band *Specialized sessions for: Administrators, ESL teachers, Special Education teachers, Counselors, Related Service Providers, Psychologists, ETFs, Paraprofessionals, Specialists *School Based PD | | | All Staff School Orientation *School Based PD *Implementing Virtual Circles for Restorative Justice Practices |
| Monday 9/14 | Tuesday 9/15 | Wednesday 9/16 | Thursday 9/17 | Friday 9/18 |
| Classroom Preparation and Set-up, see protocol | Classroom Preparation and Set-up, see protocol | First day of school for students!!! | School in session | School in session |

Budget Implications – Hybrid vs. Full Remote

| | Hybrid Learning Model | Remote Learning Model |
|---------------------------|-----------------------|-----------------------|
| Transportation | \$8,471,660 | \$4,836,183 |
| Additional Staff | \$457,500 | \$228,750 |
| PPE | \$885,160 | \$530,433 |
| Devices | \$529,000 | \$529,000 |
| Blended Learning | \$1,850,000 | \$1,850,000 |
| Custodial Overtime | \$3,100,000 | \$1,600,000 |
| Grand Total | \$8,721,660 | \$5,086,183 |

Thank
you

